



# EYE PROTECTION

Your eyes are your most important tools. And we at WORKSafe are committed to their protection. Our extensive range of eyewear can carry you from the workplace to the street. Dedicated to your eye protection needs, we spare no expenses and efforts to deliver the solid products you deserve.

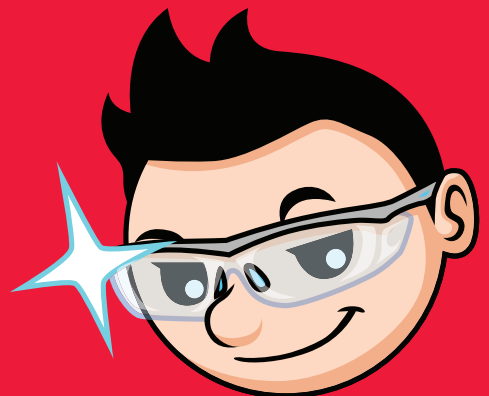
## ASIAN FIT DESIGN

We understand the unique needs of workers in the region. That's why our eyewear is specially adapted for Asian Facial Structures. This ensures a secure fit every time you put them on, for uncompromised comfort and protection.

## SETTING THE STANDARD

All our WORKSafe eyewear comply with these two standards: Singapore's SS473:2011 and the American USA ANSI/ISEA Z87.1-2015, ANSI Z87.1-2010 or ANSI Z87.1-2003. Select models also comply with EN166:2001 and AS/NZS 1337.6:2007.

- Safety Glasses (Plano)
- Prescription Safety Glasses
- Safety Goggles
- Cleaning Solution



# WE PROVIDE A COMPLETE SERVICE

We value your time, and believe that your eyewear hunt should be as hassle-free as possible. Enjoy a seamless and customised experience when you choose WORKSafe eyewear.



## One Stop Solution

These opticians also man our fully equipped laboratory. Here, we can complete the whole process, from fabrication to delivery.



## Mobility

Our in-house licensed opticians are happy to come to you, providing on-site sight tests.



## Convenience

We have an expansive network of authorised optical retail outlets across Singapore. Order and collect with ease! Save time and unnecessary fees.



## IN-HOUSE OPTICAL SERVICE

### PDS Safety Prescription (SRX) Eyewear Services

The concept of PDS Safety Prescription (SRX) Eyewear Services is based on a system of convenience, whereby we provide a complete service comprising refraction, edging, fitting and dispensing of SRX eyewear. Our in-house licensed opticians are certified by the Optometrists & Opticians Board (OOB) and Ministry of Health (MOH) Singapore.

## MOBILE OPTICAL SERVICES

Our opticians are happy to travel to your workplace to conduct the necessary optical tests. We provide a professional-grade eye screening at your convenience. Enquire today!



*\* Our Safety Prescription Lab: Our frames and lenses are tested twice. First at third-party testing labs, then once more in-house.*



# SAFETY GLASSES (PLANO)



# SAFETY GLASSES (PLANO)



3069-C1



Smoke Grey Lens



Indoor/Outdoor Lens



Green Revo Lens



3069-C2



Smoke Grey Lens



Indoor/Outdoor Lens



Green Revo Lens

## STRYX E3069

The WORKSafe® Stryx is a plano safety eyewear that blends sporty looks with safety support. Its polycarbonate construction is lightweight yet resistant. Choose from three kinds of swappable lenses to suit your style!

- Dual density injected anti-slip skull-grip temples
- Adjustable bridge width
- Complies with ANSI/ISEA Z87.1-2015 and SS473:2011 standards
- Additional prescription lens inserts available as a top-up

BRAND	PRODUCT CODE	DESCRIPTION
WORKSafe®	300WSE3069-C1	Satin Black Frame with Grey tips, Clear lens HC
	300WSE3069-C2	Satin Black Frame with Green tips, Clear lens HC
	330WSE3069-L01	Indoor/Outdoor Lens with Nose Bridge
	330WSE3069-L02	Smoke Grey Lens with Nose Bridge
	330WSE3069-L03	Green Revo Lens with Nose Bridge



# SAFETY GLASSES (PLANO)



## AERO E3058

The WORKSafe® Aero is the lighter stronger and more comfortable successor to our popular A-Wing.

- Lightweight impact-resistant polycarbonate (PC) frame
- Dual density injected anti-slip skull-grip temples
- Integrated universal-fit nose pads
- Complies with ANZI/ISEA Z87.1-2015 and SS473:2011 standards



BRAND	PRODUCT CODE	DESCRIPTION
WORKSafe®	300WSE3058-C1	Glossy Black frame, Clear lens HC
	300WSE3058-C2	Glossy Black frame, Indoor/Outdoor lens HC

# SAFETY GLASSES (PLANO)

## GLINDER E3048

The WORKSafe® Glinder features extendable temple length and temple inclination for a better fit.

- Wraparound frame maximises peripheral vision and protection
- Dual density injected anti-slip skull-grip temples
- Soft rubber universal-fit nose pads
- 3-stage extendable temple length with 3-point adjustable inclination
- Vented soft-cushioned browguard and temple increase aeration and minimise fogging
- Complies with ANSI Z87-2020 and SS473:2011 standards



3048-C3



3048M220



3048-C1



3048-C2

BRAND	PRODUCT CODE	DESCRIPTION
WORKSafe®	300WSE3048-C1	Black/Red frame, Clear lens AF
	300WSE3048-C2	Black/Red frame, Grey lens AF
	300WSE3048-C3	Black/Red frame, Indoor/Outdoor lens HC
	300WSE3048M220	Matt Black frame, Indoor/Outdoor lens HC

## WIDER E3050

The WORKSafe® Wider. Features a side-way 3-stage extendable self-locking tri-flex frontal frame that provides a better fit for both Asian and Western facial profiles.

- Wraparound frame maximises peripheral vision and protection
- Side-way 3-stage extendable self-locking tri-flex frontal frame
- Dual density injected anti-slip skull-grip temples
- Soft rubber universal-fit nose pads
- Complies with ANSI Z87-2020 and SS473:2011 standards



3050601



3050311



3050320



BRAND	PRODUCT CODE	DESCRIPTION
WORKSafe®	300WSE3050601	White/Green frame, Clear lens HC/AF
	300WSE3050311	Grey/Blue frame, Grey lens HC/AF
	300WSE3050320	Grey/Blue frame, Indoor/Outdoor lens HC

# SAFETY GLASSES (PLANO)

## ALCOR E3029

The WORKSafe® Alcor is designed to provide peripheral vision with a secure wraparound frame. The Alcor boasts an integrated brow guard to keep sweat and dirt away from your eyes.

- Wraparound frame maximises peripheral vision and protection
- Soft rubber universal-fit nose pads
- Complies with ANSI Z87-2020 and SS473:2011 standards



3029A610



3029000

3029A720

BRAND	PRODUCT CODE	DESCRIPTION
WORKSafe®	300WSE3029000	Clear frame, Grey Translucent Temples, Clear lens HC
	300WSE3029A610	Grey frame, Grey lens HC
	300WSE3029A720	Brown translucent frame, Indoor/Outdoor lens HC

## RAIDER E3011

The WORKSafe® Raider has opaque integrated side shields to block out glare and maximise protection. Lightweight Nylon frame available for Shiny Black frames.

- Wraparound frame maximises peripheral vision and protection
- Dual density injected anti-slip skull-grip temples
- Soft rubber universal-fit nose pads
- Complies with ANSI/ISEA Z87.1-2010 and SS473:2011 standards



3011A722



3011S201

3011S211

BRAND	PRODUCT CODE	DESCRIPTION
WORKSafe®	300WSE3011S201	Black frame, Clear lens HC/AF
	300WSE3011S211	Black frame, Grey lens HC/AF
	300WSE3011A722	Translucent Brown frame, Indoor/Outdoor lens HC



# SAFETY GLASSES (PLANO)

## ASTRIDER-E E3033

The WORKSafe® Astrider-E is an improved version of the popular Astrider. Featuring integrated cheek and side protectors, Astrider-E provides maximum protection for the user.

- Wraparound frame maximises peripheral vision and protection
- 3-stage extendable self-locking tri-flex temples with 3-point adjustable inclination
- Soft universal-fit nose pads
- Complies with ANSI/ISEA Z87.1-2010 and SS473:2011 standards



BRAND	PRODUCT CODE	DESCRIPTION
WORKSafe®	300WSE3033101	Navy Blue frame, Clear lens HC/AF
	300WSE3033111	Navy Blue frame, Grey lens HC/AF

## SKYVO E197

The WORKSafe® Skyvo's unique curved lens lines your facial contours, giving you complete protection.

- Wraparound frame maximises peripheral vision and protection
- Integrated cheek guard for complete protection
- 3-stage extendable self-locking tri-flex temples with 3-point adjustable inclination
- Complies with ANSI Z87.1-2003 and SS473:2011 standards



BRAND	PRODUCT CODE	DESCRIPTION
WORKSafe®	300WSE197101	Navy Blue frame, Clear lens HC/AF
	300WSE197111	Navy Blue frame, Grey lens HC/AF
	300WSE197120	Navy Blue frame, Indoor/Outdoor lens HC

# SAFETY GLASSES (PLANO)

## CHASER E190

The WORKSafe® Chaser features flexible corrugated skull-grip temple tips for a more comfortable and secure fit.

- Lightweight impact-resistant polycarbonate frame
- Wraparound frame maximises peripheral vision and protection
- Soft rubber universal-fit nose pads
- Complies with ANSI Z87-2020 and SS473:2011 standards



19010



19000



BRAND	PRODUCT CODE	DESCRIPTION
WORKSafe®	300WSE19000	Frosted Clear frame, Clear lens HC
	300WSE19010	Frosted Grey frame, Grey lens HC

## FIREFLY E622

The WORKSafe® Firefly's unique curved lens provides maximum protection along your facial profile.

- Lightweight impact-resistant polycarbonate frame
- Integrated cheek guard for complete protection
- Soft rubber universal-fit nose pads
- Complies with ANSI Z87.1-2003 and SS473:2011 standards



62230



62220



62201



62211



BRAND	PRODUCT CODE	DESCRIPTION
WORKSafe®	300WSE62201	Frosted frame, Clear lens AF
	300WSE62211	Frosted Grey frame, Grey lens AF
	300WSE62220	Frosted frame, Indoor/Outdoor HC
	300WSE62230	Frosted Grey frame, Grey Mirror lens HC

# SAFETY GLASSES (PLANO)

## MANTIS E122

WORKSafe® Mantis' lightweight wraparound lens maximises both peripheral vision and protection.

- Lightweight impact-resistant polycarbonate frame
- Wraparound frame maximises peripheral vision and protection
- Integrated cheek guard for complete protection
- Integrated universal-fit nose pads
- Complies with ANSI Z87.1-2003 and SS473:2011 standards



12210



12200/12201



12220

BRAND	PRODUCT CODE	DESCRIPTION
WORKSafe®	300WSE12200	Frosted frame, Clear lens HC
	300WSE12201	Frosted frame, Clear lens AF
	300WSE12210	Frosted Grey frame, Grey lens HC
	300WSE12220	Frosted Grey frame, Indoor/Outdoor lens HC

## STRIDER I E261

WORKSafe® Strider I's integrated side shields maximise peripheral vision.

- Wraparound frame maximises peripheral vision and protection
- 4-stage temple extension for perfect fit
- Integrated universal-fit nose pads
- Complies with ANSI Z87.1-2003 and SS473:2011 standards



26100



26110



BRAND	PRODUCT CODE	DESCRIPTION
WORKSafe®	300WSE26100	Navy Blue frame, Clear lens HC
	300WSE26110	Navy Blue frame, Grey lens HC



# SAFETY GLASSES (PLANO)

## SABRE E3049

The WORKSafe® Sabre possesses thin rubberized temples, making it light, comfortable and grippy.

- Wraparound frame maximises peripheral vision and protection
- 3-point adjustable temple inclination
- Dual density injected anti-slip skull-grip temples
- Soft rubber universal-fit nose pads
- Complies with EN166:2001 and SS473:2011 standards



3049000



3049020



BRAND	PRODUCT CODE	DESCRIPTION
WORKSafe®	300WSE3049000	Clear frame, Clear lens HC
	300WSE3049020	Clear frame, Indoor/ Outdoor lens HC



# SAFETY GLASSES (OVERSPECS)

## RAZOR E3067

The WORKSafe® Razor eyewear combines sharp looks with great protection. These stylish glasses can be worn over prescription eyewear to provide great protection from impact forces. These extreme overspecs even provide protection against high speed particles at extreme temperature conditions. (between -5°C and 55°C)

- Wraparound frame maximises peripheral vision and protection
- Lightweight impact-resistant polycarbonate frame
- Integrated universal-fit nose pads
- Complies with EN166:2001 and SS473:2011 standards



BRAND	PRODUCT CODE	DESCRIPTION
WORKSafe®	300WSE3067-C1	Matt black frame, Clear lens HC

## AIRSPEX E3032

Bid goodbye to boring overspecs design with the arrival of WORKSafe® Airspex. A fashionable piece with bold, sleekly designed ventilated temples and red rubber temple tips add a tinge of style and excitement to the user. Airspex can be worn over prescription glasses or on its own as safety spectacles or sunglasses.

- Ventilated temples increase aeration and minimise fogging while upping the fashion quotient
- Dual density injected anti-slip skull-grip temples
- Complies with ANSI/ISEA Z87.1-2010 and SS473:2011 standards



3032-C3

BRAND	PRODUCT CODE	DESCRIPTION
WORKSafe®	300WSE3032301	Graphite frame, Clear lens AF
	300WSE3032311	Graphite frame, Grey lens AF
	300WSE3032-C3	Transparent Clear frame with Red Tips, Clear lens HC



3032301



3032311

# SAFETY GLASSES (OVERSPECS)

## LESPEX E3030

The WORKSafe® Lespex can be worn over prescription eyewear or simply on its own. It is lightweight at 30g and built for comfortable wear.

- Wraparound frame maximises peripheral vision and protection
- Integrated universal-fit nose pads.
- Complies with ANSI Z87-2020 and SS473:2011 standards



3030A610



3030000

3030A720

BRAND	PRODUCT CODE	DESCRIPTION
WORKSafe®	300WSE3030000	Frosted clear frame, Clear lens HC
	300WSE3030A610	Graphite translucent frame, Grey lens HC
	300WSE3030A720	Brown translucent frame, Indoor/Outdoor lens HC

## DUOSPEX E387

A classic piece - unisex and sophisticated. Can be worn over prescription glasses or on its own as safety spectacles or sunglasses.

- Fits Western and Asian profiles
- Dual density injected anti-slip skull grip temples for snug fit
- Complies with ANSI Z87.1-2003 and SS473:2011 standards



387211



387201



BRAND	PRODUCT CODE	DESCRIPTION
WORKSafe®	300WSE387201	Matt Black frame, Clear lens AF
	300WSE387211	Matt Black frame, Grey lens AF



# SAFETY GLASSES (OVERSPECS)

## V-SPEX EDK1

WORKSafe® V-Spex can be worn over prescription eyewear or simply on its own.

- Wraparound frame maximises peripheral vision and protection
- Lightweight impact-resistant polycarbonate frame
- Vented side shields increase aeration and minimise fogging
- Integrated universal-fit nose pads
- Complies with ANSI Z87.1-2003 and SS473:2011 standards



EDK1-C3



EDK100



EDK101

BRAND	PRODUCT CODE	DESCRIPTION
WORKSafe®	300WSEDK100	Clear frame, Clear lens HC
	300WSEDK101	Frosted Grey frame Grey lens HC
	300WSEDK1-C3	Dark amber frame, Dark Amber lens AF



# WORKGARD EYEWEAR

SAFETY APPAREL

EYEWEAR

SAFETY GLASSES (PLANO)



**WORKGard®**  
SAFETY MADE EASY

# SAFETY GLASSES (PLANO)

## WORKGARD® FIREWING

Tastefully accented with a splash of colour, these futuristic frames offer no-nonsense protection at your workplace. Comfortable and light, you can wear these for hours on end!

- Clear and light translucent frame
- Durable hard coated lenses
- Integrated TPR nosepad
- Tested to ANZI/ISEA Z87.1-2015 and SS473:2011 standards



BRAND	PRODUCT CODE	DESCRIPTION
WORKSafe®	300WGE3064-C1	Translucent clear frame, Clear lens HC





# SAFETY GLASSES (PLANO)

## WORKGARD® E3068

This essential pair of polycarbonate eyewear offers great value, durability and defense in a low-profile form factor.

- Clear and light translucent frame
- Durable anti-fog lenses
- Complies with ANZI/ISEA Z87.1-2020 and SS473:2011 standards



E3068-C2

BRAND	PRODUCT CODE	DESCRIPTION
WORKSafe®	300WGE3068-C1	Translucent clear temple, Black tip, Clear lens AF
	300WGE3068-C2	Translucent grey temple, black tip, Grey AF Lens

## WORKGARD® E3037

The WORKGard® E3037 safety glasses is a wraparound nylon frame with integrated side shields to maximise peripheral vision and protection.

- 3-stage extendable temple length for perfect fit
- Integrated universal-fit nose pads
- Complies with ANSI/ISEA Z87.1-2010 and SS473:2011 standards



BRAND	PRODUCT CODE	DESCRIPTION
WORKSafe®	300WGE3037S200	Black frame, Clear lens HC

# PRESCRIPTION SAFETY GLASSES



# PRESCRIPTION SAFETY GLASSES

## OTUS E3065

The WORKSafe® Otus takes its name from a small, agile owl. In the same way, expect this polycarbonate eyewear to be light and easy to wear, while providing good protection from impact!

- Lightweight hypo-allergenic full nylon frame
- Anti-slip skull-grip temples
- Impact-resistant polycarbonate side shields
- Complies with ANZI/ISEA Z87.1-2015 and SS473:2011 standards



3065-C1



3065-C2

BRAND	PRODUCT CODE	DESCRIPTION
WORKSafe®	340WSE3065-C1	Translucent Teal Blue frame, Pale Violet Red temple, Dark Grey temple tip, Clear lens HC
	340WSE3065-C2	Translucent Light Grey frame, Light Grey Temple, Cool Grey temple tip, Clear lens HC

## VECTOR E3062

VECTOR glasses provide serious protection for serious work. Durable and rugged without sacrificing comfort, these reliable frames offer your eyes the defences they deserve.

- 3-point temple adjustments allow greater face & cheek coverage
- Lightweight and durable TR90 frame.
- Impact-resistant polycarbonate side shields with ventilation.
- Integrated nose pads.
- Tested to ANSI Z87.1-2015 standard and complies with SS473:2011 standards.



BRAND	PRODUCT CODE	DESCRIPTION
WORKSafe®	340WSE3062-C1	Matt Black frame, Clear lens HC



# PRESCRIPTION SAFETY GLASSES

## RETRO E3059

With detachable eye shields that affix onto a sleek frame, these timeless and classy glasses are right at home at the workplace and on the streets.

- Fold the temples and lift and slide side shields outwards to detach them
- Impact-resistant polycarbonate side shields
- Slender and slim frame fits in most pockets of shirts and pants
- Durable stainless steel frame with lightweight temples
- Comfortable silicon nose pads
- Grippy thermoplastic rubber (TPR) temple tips
- Tested to ANSI Z87.1-2015 standard and complies with SS473:2011 standards



BRAND	PRODUCT CODE	DESCRIPTION
WORKSafe®	340WSE3059-C1	Matt Black frame, Clear lens HC Size: 58

## URANUS E3060

Simplicity isn't a bad thing: these glasses are a no-frills and effective option for defence, comfort and style. They also come with a rounded side shield that fits nicely on your cheek.

- Lightweight impact-resistant polycarbonate (PC) frame
- Broad impact-resistant side shield for side protection
- Integrated universal-fit nose pads
- Complies with ANSI/ISEA Z87.1-2015 and SS473:2011 standards



BRAND	PRODUCT CODE	DESCRIPTION
WORKSafe®	340WSE3060-C1	Matt Black frame, Clear lens HC

# PRESCRIPTION SAFETY GLASSES

## STEDA II E3055

Stronger, more durable and extra comfortable. The enhanced design of WORKSafe® Steda II – successor of our popular Steda, is now better with metal-free design.

- Dual density injected anti-slip skull-grip temples
- Impact-resistant integrated TR90 side shields
- Comfortable ABS/thermoplastic rubber (TPR) browguard
- 3-point adjustable temple inclination for better fit
- Integrated universal-fit nose pads
- Tested to ANSI Z87.1-2010 standard and complies with SS473:2011 standards



SINGAPORE REGISTERED DESIGN: D2009/260/B



BRAND	PRODUCT CODE	DESCRIPTION
WORKSafe®	340WSE3055-C2	Matt Black frame, Clear lens HC

## STEED R E3052

Steed R, the superior successor of our most well-received model, is now enhanced with the addition of adjustable temple inclination.

- Lightweight impact-resistant TR90 frame
- Vented TPR browguard
- Dual density injected anti-slip skull-grip TR90 temples
- Impact-resistant integrated TR90 side shields
- 7-point adjustable temple inclination for better fit
- Soft thermoplastic rubber (TPR) universal-fit nose pads
- Tested to ANSI Z87.1-2010 standard and complies with SS473:2011 standards



BRAND	PRODUCT CODE	DESCRIPTION
WORKSafe®	340WSE3052A4C57	Grey, Clear frame, Clear lens HC



3052A4C57

# PRESCRIPTION SAFETY GLASSES

## KUIPER E3045

The Kuiper, pronounced "KAI-PER", is capable of being a prescription protective eye glass, or just a simple piece of plano protective eyewear. Grip and comfort are its key-points. The Kuiper features extra-large super-grippy nose pads and large rubber-tipped temples.

- Lightweight hypo-allergenic full nylon frame
- Anti-slip skull-grip temples
- Impact-resistant integrated side shields
- Soft grippy thermoplastic rubber (TPR) universal-fit nose pads
- Tested to ANSI Z87.1-2010 standard and complies with EN166:2001 and SS473:2011 standards



3045-C3



3045-C2

BRAND	PRODUCT CODE	DESCRIPTION
WORKSafe®	340WSE3045-C2	Charcoal frame, Grey lens HC
	340WSE3045-C3	Translucent Grey frame, Clear lens HC

## STEED E3041

For all-day comfort, the Steed sports a vented frame that helps with fogged lenses and comfy rubber tips on all skin-contact points. The Steed is also able to accommodate extremely high prescriptions and high astigmatism.

- Lightweight impact-resistant TR90 frame
- Vented thermoplastic rubber (TPR) browguard
- Impact-resistant integrated TR90 side shields
- Tested to ANSI Z87.1-2010 standard and complies with SS473:2011 standards



30411F57



30413C57

30413F57



SINGAPORE REGISTERED DESIGN: D2013/600/G

BRAND	PRODUCT CODE	DESCRIPTION
WORKSafe®	340WSE30411F57	Blue, Frosted frame, Clear lens HC
	340WSE30413C57	Grey, Clear frame, Clear lens HC
	340WSE30413F57	Grey, Frosted frame, Clear lens HC



# PRESCRIPTION SAFETY GLASSES

## PLUTO E3014

WORKSafe® Pluto has a lightweight polycarbonate frame with tinted side shields moulded directly onto the frame and temples, preventing glare and increasing protection.

- Lightweight impact-resistant polycarbonate frame
- Formable skull-grip stainless steel temples ensure a better fit
- Impact-resistant polycarbonate side shields
- Integrated universal-fit nose pads
- Tested to ANSI Z87.1-2010 standard and complies with SS473:2011 standards



3014A654



BRAND	PRODUCT CODE	DESCRIPTION
WORKSafe®	340WSE3014A654	Grey Translucent frame, Clear lens HC

## VESTA E3015

WORKSafe® Vesta combines both the weightlessness of a polycarbonate frame with the comfort of formable stainless steel temples.

- Lightweight impact-resistant polycarbonate frame
- Formable skull-grip stainless steel temples ensure a better fit
- Impact-resistant polycarbonate side shields
- Integrated universal-fit nose pads
- Tested to ANSI Z87.1-2010 standard and complies with SS473:2011 standards



3015S254



BRAND	PRODUCT CODE	DESCRIPTION
WORKSafe®	340WSE3015S254	Black frame, Clear lens HC

# PRESCRIPTION SAFETY GLASSES

## MERCURY G2 E3013

The WORKSafe® Mercury G2, the successor of the best-selling Mercury E1140, is now sleeker and stronger than ever before.

- Corrosion-resistant stainless steel frame
- Formable rubber skull-grip stainless steel temples ensure a better fit
- Impact-resistant polycarbonate side shields
- Fully adjustable soft anti-slip silicone nose pads
- Tested to ANSI Z87.1-2010 standard and complies with SS473:2011 standards



BRAND	PRODUCT CODE	DESCRIPTION
WORKSafe®	340WSE3013A054	Matt Grey frame Size: 54

## VENUS E4290

WORKSafe® Venus features strong, super-lightweight, TR90 premier polymer temples suitable for working conditions with vulnerability to corrosion.

- Corrosion-resistant, hypoallergenic stainless steel frame
- Formable temples ensure a better fit
- Impact-resistant polycarbonate side shields
- Fully adjustable soft anti-slip silicone nose pads
- Tested to ANSI Z87.1-2003 standard and complies with SS473:2011 standards



4290B053/  
4290B055

SINGAPORE REGISTERED  
DESIGN: D2011/735/J



4290SGS53/  
4290SGS55

BRAND	PRODUCT CODE	DESCRIPTION
WORKSafe®	340WSE4290SGS53	Gunmetal/Green frame, Size: 53
	340WSE4290SGS55	Gunmetal/Green frame, Size: 55
	340WSE4290B053	Metallic Blue/Blue frame, Size: 53
	340WSE4290B055	Metallic Blue/Blue frame, Size: 55



# PRESCRIPTION SAFETY GLASSES

SWORKE<sup>®</sup> RX

SAFETY APPAREL

EYEWEAR

PRESCRIPTION SAFETY GLASSES





# PRESCRIPTION SAFETY GLASSES

## SWORKE®RX MAXIMUS X

SWORKE® Maximus X provides safety with style! Easily swap between a variety of lens options based on your fit and your needs.

- Impact-resistant polycarbonate (PC) frame
- Dual density injected anti-slip skull-grip temples
- Easy quickswap lens design
- Comfortable and exchangeable PC/thermoplastic rubber (TPR) browguard
- Easy adjustable TPR to stainless steel over moulding nose pads



### FRAME:



3061-C2



3061-C1

### SPARE LENS:



3061-L01



3061-L02



3061-L03



3061-L04

BRAND	PRODUCT CODE	DESCRIPTION
SWORKE®RX	300SWK3061-C1	Matt Black frame, Clear lens HC/AF
	340SWK3061-C2	Matt White frame, Clear lens HC/AF
	330SWK3061-L01	Maximus X Spare lens, Indoor/Outdoor lens HC
	330SWK3061-L02	Maximus X Spare lens, Red Revo HC
	330SWK3061-L03	Maximus X Spare lens, Blue Revo HC
	330SWK3061-L04	Maximus X Spare lens, Photocromic HC (from Clear to Grey)

# PRESCRIPTION SAFETY GLASSES

## SWORKE®RX COBRA

Technically majestic, this serpentine masterpiece brings the most versatility, style and safety.

- 5-point temple inclination allows greater fit
- Re-engineered enlarged venting ports along the brow of the facepiece aid in air movement and flux in high velocity conditions
- Tough and durable browguard channels perspiration away from your eyes
- Adjustable inclining sweat-resistant nose pads
- Switchable lens system
- Grippy wraparound temples maximises grip
- Removeable Rx lens carrier available for corrective vision
- Tested to ANSI Z87.1-2015 standard and complies with SS473:2011 standards



### FRAME:



3053M201R



3053A601R

### SPARE LENS:



3053L001S



3053L202S



3053L101S

BRAND	PRODUCT CODE	DESCRIPTION
SWORKE®RX	300SWK3053M201R	Matte Black frame, Clear lens HC/AF
	300SWK3053601R	Shiny White frame, Clear lens HC/AF
	300SWK3053A601R	Translucent Grey frame, Clear lens HC/AF
	330SWK3053L001S	Cobra Spare lens, Clear lens HC/AF
	330SWK3053L592	Cobra Spare lens, Red Revo HC
	330SWK3053LA893	Cobra Spare lens, Purple Revo Polarized HC

# PRESCRIPTION SAFETY GLASSES

## SWORKE®RX PRIMUS

We wanted a bold frame, bold and tough as nails. So we engineered one.

- Broad frame provides the best molecular circulation - designed for ease of air flow
- Switchable lens system - choices of polarized lenses available
- Switch temples to adjustable headband for more vigorous activity
- Sweat-resistant nose pads and sponge browguard cushions against huge impact
- Removeable Rx lens carrier available for corrective vision
- Tested to ANSI Z87.1-2010 standard and complies with SS473:2011 standards



### FRAME:



3002A001R



3002S201R



3002M201R

### SPARE LENS:



3002L593



3002L393



3002L103



3002L101



3002L001

BRAND	PRODUCT CODE	DESCRIPTION
SWORKE®RX	300SWK3002A001R	Electric Matte Grey frame, Clear lens HC/AF
	300SWK3002601R	Shiny White frame, Clear lens HC/AF
	300SWK3002S201R	Shiny Black frame, Clear lens HC/AF
	300SWK3002M201R	Matte Black frame, Clear lens HC/AF
	330SWK3002L593	Primus Spare lens, Red Revo Polarized HC
	330SWK3002L393	Primus Spare lens, Blue Revo Polarized HC
	330SWK3002L103	Primus Spare lens, Grey Polarized HC
	330SWK3002L101	Primus Spare lens, Grey HC/AF
	330SWK3002L001	Primus Spare lens, Clear HC/AF



# PRESCRIPTION SAFETY GLASSES

## SWORKE®RX CYCLONE-X

Constructed to complement both the Asian and Western facial anatomies. It is the second version of a hurricane-like technical sports frame.

- 3-point temple adjustments allow greater face & cheek coverage
- Switchable lens system - choices of polarized and photochromic lenses available
- Vented frame
- Grooved and rubber tipped wraparound temples maximise grip
- Removeable, sweat-resistant padded browguard
- Burly rubber nose pads cushions impact
- Removeable Rx lens carrier available for corrective vision
- Tested to ANSI Z87.1-2010 standard and complies with SS473:2011 standards



### FRAME:



3003S201R



3003-C4

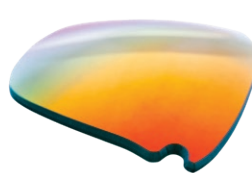
### SPARE LENS:



3003L103



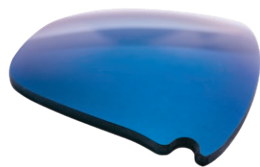
3003L007



3003L592



3003L292



3003L192



3003L001

BRAND	PRODUCT CODE	DESCRIPTION
SWORKE®RX	300SWK3003S201R	Shiny Black frame, Clear lens HC/AF
	300SWK3003601R	Shiny White frame, Clear lens HC/AF
	300SWK3003D401R	Shiny Olive frame, Clear lens HC/AF
	300SWK3003-C4	Translucent Grey frame, Clear lens HC/AF
	330SWK3003L103	Cyclone-X Spare Lens, Grey Polarized HC
	330SWK3003L007	Cyclone-X Spare Lens, Photochromic HC (from Clear to Grey)
	330SWK3003L592	Cyclone-X Spare Lens, Red Revo HC
	330SWK3003L292	Cyclone-X Spare Lens, Versa-Lens HC
	330SWK3003L192	Cyclone-X Spare Lens, Blue Revo HC
	330SWK3003L001	Cyclone-X Spare Lens, Clear HC/AF

# PRESCRIPTION SAFETY GLASSES

## SWORKE®RX OPTIMUS 2

An evil twin. More hardcore, more extreme, enhanced technical frame. Optimus' bad-ass brother.

- 3-point temple inclination provides versatile fit
- Switchable lens system
- Lined with numerous venting ports for ease of air flow and enhanced circulation
- High density sweat-resistant closed-cell foam browguard cushions high strength impact
- Tough sweat-resistant nose pads enhance grip in motion and cushions against impact
- Motion stable frame with anti-slip wraparound frame resists shaking
- Removeable Rx lens carrier available for corrective vision
- Tested to ANSI Z87.1-2010 standard and complies with SS473:2011 standards



### FRAME:

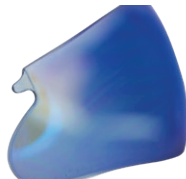


3012301R

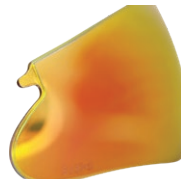
### SPARE LENS:



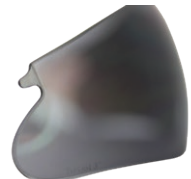
207L292



207L392



207L592



207L101

BRAND	PRODUCT CODE	DESCRIPTION
SWORKE®RX	300SWK3012301R	Pearl Graphite frame, Clear lens HC/AF
	330SWK207L292	Optimus 2 Spare Lens, Versa-lens HC
	330SWK207L392	Optimus 2 Spare Lens, Blue Revo HC
	330SWK207L592	Optimus 2 Spare Lens, Red Revo HC
	330SWK207L101	Optimus 2 Spare Lens, Grey HC/AF

# PRESCRIPTION SAFETY GLASSES

## SWORKE®RX OPTIMUS

Our very first model. The Optimus, a pioneer technical frame featuring our signature Rx Carrier.

- Switchable lens system
- Lined with numerous venting ports for ease of air flow and enhanced circulation
- High density sweat-resistant closed-cell foam browguard cushions high strength impact
- Tough sweat-resistant nose pads enhance grip in motion and cushions against impact
- Anti-slip, moisture-resisting, wraparound temples provides motion stability
- Removeable Rx lens carrier available for corrective vision
- Tested to ANSI Z87.1-2010 standard and complies with SS473:2011 standards



### FRAME:

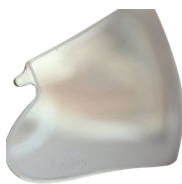


207301R

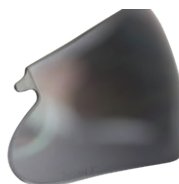
### SPARE LENS:



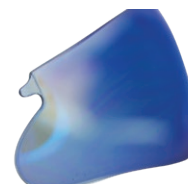
207L001



207L292



207L101



207L392

BRAND	PRODUCT CODE	DESCRIPTION
SWORKE®RX	300SWK207301R	Pearl Graphite frame, Clear lens HC/AF
	330SWK207L001	Optimus Spare Lens, Clear HC/AF
	330SWK207L292	Optimus Spare Lens, Versa-lens HC
	330SWK207L101	Optimus Spare Lens, Grey HC/AF
	330SWK207L392	Optimus Spare Lens, Blue Revo HC



# PRESCRIPTION SAFETY GLASSES

## SWORIKER<sup>®</sup> RX





# SAFETY GOGGLES



## STINGER E3031

WORKSafe® Stinger - an acetate anti-fog lens goggle that offers good protection. Its chemical-resistant lens is paired with a soft rubber nose that accommodates most Western and Asian facial profiles.

- Cellulose acetate anti-fog lens by Jebesen-Mazzucchelli, Italy
- 180° panoramic lens
- Integrated air ventilation system and cheek protector
- Can be worn over prescription eyewear
- Suitable for use with half-masks and filtering face masks
- Complies with ANSI/ISEA Z87.1-2015, EN166:2001 F and SS473:2011 standards



3031-C2



SINGAPORE REGISTERED  
DESIGN: D2013/439/B

BRAND	PRODUCT CODE	DESCRIPTION
WORKSafe®	310WSE3031-C2	Translucent clear frame, Clear AF lens with Black WORKSafe® woven headband

\*Passed splash test with D3 marking.

# SAFETY GOGGLES

## BLUESTEEL E304

The WORKSafe® Bluesteel safety goggles is built with an integrated ventilation system for people who wear prescription eyewear. Bluesteel goggles also offer unparalleled visibility with its anti-fog coating.

- Flexible body and anatomical nose cushioning adapts to face for snug fit
- Fully adjustable headband
- Integrated cheek protector
- Suitable for use with half-masks and filtering face masks
- Complies with ANSI Z87.1-2003 and SS473:2011 standards



304901



BRAND	PRODUCT CODE	DESCRIPTION
WORKSafe®	310WSE304901	Grey frame, Clear lens AF, Dark Grey WORKSafe® headband

## ASTRONIX E302

The WORKSafe® Astronix provides unfettered side visibility with 180°-panoramic lens. Scratch-resistant and affordable, they can even be worn over prescription eyewear.

- Flexible body and anatomical nose cushioning adapts to face for snug fit
- Fits over most prescription eyewear
- Fully adjustable headband
- Integrated ventilation system and cheek protector
- Suitable for use with half-masks and filtering face masks
- Complies with ANSI Z87.1-2003 and SS473:2011 standards



BRAND	PRODUCT CODE	DESCRIPTION
WORKSafe®	310WSE302101	Grey frame, Clear lens AF, Dark Grey WORKSafe® headband

# SAFETY GOGGLES

## BIONIX E303

WORKSafe® Bionix is a wraparound panavision goggles with integrated ventilation system, dual density rubber body and soft rubber nose cushioning to provide total eye protection in optimal comfort, even in extreme situations.

- Can be worn over prescription eyewear
- Fully adjustable headband
- Integrated cheek protector
- Suitable for use with half-masks and filtering face masks
- Complies with ANSI Z87.1-2003 and SS473:2011 standards



BRAND	PRODUCT CODE	DESCRIPTION
WORKSafe®	310WSE303501	Orange frame, Clear lens AF, Dark Grey WORKSafe® headband

## STRIKE E301

WORKSafe® Strike safety goggles is designed for comfort. The upper and lower parts of the body are frosted to protect against light reflection and glare.

- Flexible body adapts to face for snug fit
- Fully adjustable headband
- Integrated ventilation system and cheek protector
- Suitable for use with half-masks and filtering face masks
- Complies with ANSI Z87:2015 and SS473:2011 standards



BRAND	PRODUCT CODE	DESCRIPTION
WORKSafe®	310WSE301101	Frosted Clear frame, Clear lens AF, Light Grey WORKSafe® headband

*\*Passed splash test with D3 marking.*



# WORKGARD® SAFETY GOGGLES

## BASIC E3066

This WORKGard® Basic goggle combines an anti-fog polycarbonate lens with a clear PVC frame. It's the crystal-clear choice for general-use eye protection!

- Clear and light translucent frame
- Anti-fog (AF) coated lenses
- Tested to EN166 and SS473:2011 standards



BRAND	PRODUCT CODE	DESCRIPTION
WORKGard®	310WGE3066-C1	Clear frame, Clear lens HC/AF

## WORKGARD® E3070

The WORKGard® E3070 provides unfettered side visibility with 180°-panoramic lens. Scratch resistant and affordable, they are great plano safety goggles for workers who do not wear prescription glasses.

- Flexible body and anatomical nose cushioning adapts to face for snug fit
- Fully adjustable headband
- Integrated ventilation system and cheek protector
- Suitable for use with half-masks and filtering face masks



BRAND	PRODUCT CODE	DESCRIPTION
WORKGard®	310WGE3070-C1	Black Frame, Clear AF Lens with Black Non-Woven Strap

# CLEANING SOLUTION



# CLEANING SOLUTION

## KLEANLENS® FIXED LENS CLEANING STATION KL461

- For use on plastic, polycarbonate and glass lenses
- Ideal for spectacles, goggles, faceshields and computer screens
- Safe and effective with all types of lens coatings
- Content: 1 bottle of Kleanlens® 500ml lens cleaning solution-biodegradable and non-toxic; 4 boxes of Kleanlens® tissue-non-abrasive and low lint tissue



BRAND	PRODUCT CODE	DESCRIPTION
WORKSafe®	350WSEKL461	Kleanlens fixed lens cleaning station c/w 500ml fluid and 4 boxes tissues

## KLEANLENS® LENS DISPOSABLE STATION KL467

- For use on plastic, polycarbonate and glass lenses
- Ideal for spectacles, goggles, faceshields and computer screens
- Safe and effective with all types of lens coatings
- Content: 1 bottle of Kleanlens® 250ml lens cleaning solution – biodegradable and non-toxic; 2 boxes of Kleanlens® tissue – non-abrasive and low lint tissue



*\*New packaging will be change when the stock ends.*

BRAND	PRODUCT CODE	DESCRIPTION
WORKSafe®	350WSEKL467	Kleanlens lens disposable station c/w 250ml fluid and 2 boxes tissues

## KLEANLENS® KLEANLENS CLEANING SOLUTION KL463 (500ML)

Protect your lenses and keep them clear with Kleanlens! This lens cleaning solution can be used on optical devices like eyewear, face shield, mobile phones and computer screens. Simply wipe your lenses with this solution to keep them in tip-top condition!

- Keeps your eyewear clean
- Suitable for plastic, polycarbonate and glass lenses

BRAND	PRODUCT CODE	DESCRIPTION
WORKSafe®	350WSEKL463	Kleanlens cleaning solution, 500ml
	350WSEKL466	Kleanlens cleaning fluid, 250ml





# CLEANING SOLUTION

## KLEANLENS® KLEANLENS CLEANING TISSUES KL462

Protect your lenses and keep them clear with Kleanlens Lens Cleaning Tissues. This lens cleaning wipes can be used on optical devices like eyewear, face shield, mobile phones and computer screens. Use these wipes by themselves or with a cleaning solution to keep your lenses in tip-top condition!

- Keeps your eyewear clean
- Non-abrasive and lint-free
- Suitable for plastic, polycarbonate and glass lenses

BRAND	PRODUCT CODE	DESCRIPTION
WORKSafe®	350WSEKL462	Kleanlens cleaning tissues, 300 pcs/box



## KLEANLENS® KLEANLENS ANTI-FOG WET WIPES KL480

Keep your eyewear clean with our Kleanlens Anti-Fog Wet Wipes. Made of non-abrasive lint-free material, these wipes effectively cleans eyewear lenses and other optical devices like mobile phones and computer screens. These pre-moistened wipes are sealed in individual disposable packets, small enough to be stored in a bag, pocket or lens case.

- Non-abrasive and lint-free, suitable for cleaning eyewear lenses, mobile phones and computer screens.
- Small and compact, convenient for use on the go
- Anti-fog agent to keep your eyewear lenses clear

BRAND	PRODUCT CODE	DESCRIPTION
WORKSafe®	350WSEKL480	Kleanlens anti-fog wet wipes, size:12x15cm, 100pcs/box



## KLEANLENS® ANTI-FOG SOLUTION KL481

WORKSafe Kleanlens Anti-Fog Solution helps keep your lenses and clear surfaces clean. Contained in a convenient spray bottle for easy application, simply spray and wipe to keep your glasses fog-free!

This lens cleaning solution can be used on optical devices like eyewear, face shield, mobile phones and computer screens.

- Keeps your eyewear clean
- Suitable for plastic, polycarbonate and glass lenses

BRAND	PRODUCT CODE	DESCRIPTION
WORKSafe®	350WSEKL481	Kleanlens anti-fog solution, 100ml










# SAFETY EYEWEAR GUIDE



## Step 1: Identify Hazards

Protectors should be mandatory where there is a reasonable probability of an eye or face injury that can be reduced or prevented with the use of protectors. A hazard assessment should be conducted to decide the risk of exposure in order to select the appropriate protectors needed. The safety officer or other responsible parties should pay attention to the different types of hazards and identify the sources of the hazards as stated below. After evaluating the information gathered, suitable protectors should be selected and used.

### Eye and Face Protection Selection Chart

	 <b>Impact</b>	 <b>Heat</b>	 <b>Chemical</b>	 <b>Dust</b>	 <b>Light/ Radiation</b>
<b>Source</b>	<ul style="list-style-type: none"> <li>Chipping</li> <li>Grinding</li> <li>Machining</li> <li>Masonrywork</li> <li>Woodworking</li> <li>Sawing</li> <li>Drilling</li> <li>Chiselling</li> <li>Powered fastening</li> <li>Sanding</li> </ul>	<ul style="list-style-type: none"> <li>Furnace operation</li> <li>Pouring</li> <li>Casting</li> <li>Hot dipping</li> <li>Gas cutting</li> <li>Welding</li> </ul>	<ul style="list-style-type: none"> <li>Liquids</li> <li>Acid/Chemical handling</li> <li>Degreasing</li> <li>Plating</li> </ul>	<ul style="list-style-type: none"> <li>Woodworking</li> <li>Buffing</li> <li>General dusty conditions</li> </ul>	<ul style="list-style-type: none"> <li>Infrared radiation</li> <li>Ultraviolet radiation (UV)</li> <li>Lasers</li> <li>Welding: electric arc</li> <li>Welding: gas</li> <li>Cutting</li> <li>Torch brazing</li> <li>Torch soldering</li> <li>Visible light (Glare)</li> </ul>
<b>Assessment of Hazard</b>	<ul style="list-style-type: none"> <li>Flying fragments: e.g. objects like particles, sand, dirt etc.</li> </ul>	<ul style="list-style-type: none"> <li>Hot sparks</li> <li>Splash from molten metals</li> <li>High temperature exposure</li> </ul>	<ul style="list-style-type: none"> <li>Chemical splash, droplets and sprays</li> <li>Irritating mists</li> </ul>	<ul style="list-style-type: none"> <li>Nuisance dusts</li> <li>Fine dusts</li> </ul>	<ul style="list-style-type: none"> <li>Optical radiation</li> <li>Poor vision</li> </ul>
<b>Eye Protection</b>	<ul style="list-style-type: none"> <li>Spectacles with side shields</li> <li>Goggles</li> <li>Faceshields worn over spectacles or goggles</li> <li>Welding helmet/ Loose-fitting respirator worn over spectacles or goggles</li> <li>Full face respirators</li> </ul>	<ul style="list-style-type: none"> <li>Spectacles with side shield</li> <li>Goggles</li> <li>Faceshields worn over goggles</li> <li>Loose-fitting respirator worn over spectacles or goggles</li> <li>Full face respirators</li> </ul>	<ul style="list-style-type: none"> <li>Goggles, eyecups and cover types</li> <li>Faceshields worn over goggles</li> <li>Loose fitting respirator worn over spectacles or goggles</li> <li>Full face respirators</li> </ul>	<ul style="list-style-type: none"> <li>Goggles, eyecaps and cover types</li> <li>Full face respirators</li> </ul>	<ul style="list-style-type: none"> <li>Welding helmets, welding shields or welding respirator (arc)</li> <li>Welding goggles, welding helmets or welding faceshield (gas, cutting, brazing)</li> <li>Spectacles or welding faceshield (soldering)</li> <li>Typical shades -arc: 10-14</li> <li>-gas welding: 6-8</li> <li>-cutting: 3-6</li> <li>-brazing: 3-4</li> <li>-soldering: 2</li> <li>Spectacles or faceshield (glare)</li> </ul>

## Step 2: Selection of Safety Eyewear

### 2.1 Minimum Requirements

Meets International Safety Standards, e.g. ANSI Z87.1-2015/2010, SS473:2011, EN166:2001, GB, JIS, AAS, AS/NZS 1337.6:2007 and CSA Z94.3-1988

### 2.2 Optical Quality

Optical Class	Spherical Refractive Power	Astigmatic Refractive Power	Prismatic Refractive Power
1	±0.06 diopters	±0.06 diopters	±0.12 diopters
2	±0.12 diopters	±0.12 diopters	±0.12 diopters

## 2.3 High Impact Rating

### 2.3.1 American Standards ANSI/ISEA Z87.1

Type of Eye Protectors	High Mass Impact, Pointed Projectile, Wt.: 500g (17.6oz.) Size: 25mm (1") Ht.: 127 cm (50")	High Velocity Impact Projectile				Markings: Manufacturer's Identification: WORKSafe®: "W"	
		Steel ball 6.35mm (0.25") Wt.: 1.04g (0.037oz.) Velocities: 45.7m/s to 91.4m/s (150 ft/s to 300ft/s)	Velocity	Steel ball 6.00mm (0.24") Wt.: 0.86g (0.030oz.) Velocities: 50.9m/s to 101.5m/s (167 ft/s to 333ft/s)	Velocity		
Spectacles/ Readers/ Magnifiers Goggles Faceshields	Frame & Lens Frame & Lens Frame/Crown & Lens	Frame & Lens Frame & Lens Frame/Crown & Lens	45.7m/s (150ft/s) 76.2m/s (250ft/s) 91.4m/s (300ft/s)	Frame & Lens Frame & Lens Frame/Crown & Lens	50.9m/s (167ft/s) 84.7m/s (278 ft/s) 101.5m/s (333 ft/s)	W Z87+ W Z87+ W Z87+	W + W Z87+ W Z87+

### 2.3.2 EN166

Types of Eye Protector	Projectile Speed of Steel Ball		
	Low energy impact 45m/s or 162km/h	Medium energy impact 120m/s or 432km/h	High energy impact 190m/s or 984km/h
Spectacles Goggles Faceshields	Applicable Applicable Applicable	N.A. Applicable Applicable	N.A. N.A. Applicable

## 2.4 Lens Materials

Generic Materials	Types	Optical Quality	Minimum Mechanical Strength	Chemical Resistance	Weight
Mineral Material	Hardened Glass Laminated Glass	Excellent Excellent	12m/s (3mm) 12m/s (3mm)	Excellent Excellent	Heavy Heavy
Organic/Synthetic	CR-39 Plastic Acetate Polycarbonate	Excellent Excellent Excellent	12m/s (3mm) 45m/s 45m/s	Good Very good Very Good (if coated)	Light Lighter Lightest

# Step 3: Understanding Standard Markings

## 3.1 ANSI/ISEA Z87.1 Marking Requirements

Type of Mark	Lenses & Replacement		Frame	Marking for Complete Device (no replaceable parts)
	Spectacles	All Other		
All protectors shall bear the markings below.				
Manufacturer's Mark or Logo	Yes	Yes	Yes	Yes
Standard(Non-Impact Rated)				
Plano		Z87	Z87	Z87
Rx		Z87	Z87-2	Z87-2
The following shall be required only when claims of impact rating, a specific lens type and/or use are made by the manufacturer.				
Impact Mark				
Impact Rated Plano, Readers/Magnifiers	+	Z87+	Z87+	Z87+
Impact Rated Rx	+	Z87+	Z87-2+	Z87-2+
Lens type				
Clear				
Welding	W shade	W shade		W shade
UV Filter	U scale number	U scale number		U scale number
Visible Light Filter	L scale number	L scale number		L scale number
IR Filter	R scale number	R scale number		R scale number
Variable Tint	V	V		V
Special Purpose	S	S		S
Use				
Splash/Droplet			D3	D3
Dust			D4	D4
Fine Dust			D5	D5



### 3.2 ANSI/ISEA Z87.1 Marking Sequence

Markings can follow a top to bottom sequence or a left to right sequence.

DISCLAIMER: The information below is provided to demonstrate examples of resulting product markings compliant with ANSI/ISEA Z87.1-2015. Such information is not meant to be all-inclusive and is provided for illustrative purposes only.

Device	Manufacturer's Mark Or Logo	Standard Mark	Impact Mark	Lens Type	Use	Resulting Mark
<b>LENSES</b>						
Goggle or faceshield, non-impact rated (UV)	W	Z87		U3		W Z78U3
General purpose spectacle, non-impact rated (shade 2.0)	W			W2.0		W W2.0
<b>FRAME</b>						
Goggle impact rated, fine dust rated	W	Z87	+		D5	W Z87+D5
Goggle, non-impact rated, dust rated	W	Z87			D4	W Z87D4
Goggle, non-impact rated, splash rated	W	Z87			D3	W Z87D3
Prescription spectacle w/o side protection	W	Z87-2				W Z87-2
Prescription spectacle, impact rated	W	Z87-2	+			W Z87-2+
<b>COMPLETE DEVICE</b>						
Goggle, faceshield (UV & IR)	W	Z87		U6 & R2		W Z87U6R2
Goggle, faceshield, impact rated, splash rated (shade 5)	W	Z87	+	W5	D3	W Z87+W5D3

### 3.3 EN166

#### FRAME

W	EN STANDARD	F	XXXCE
Identification of the manufacturer WORKSafe®	EN166	Resistance to high speed particles	Test Laboratory Identification

#### LENS

3-1,7	W	1	F	K	N
Code no. of UV Filter with good colour recognition- Shade no.	Identification of the manufacturer WORKSafe®	Optical Class	Resistance to high speed particles	Resistance to surface damage by fine particles	Resistance to fogging

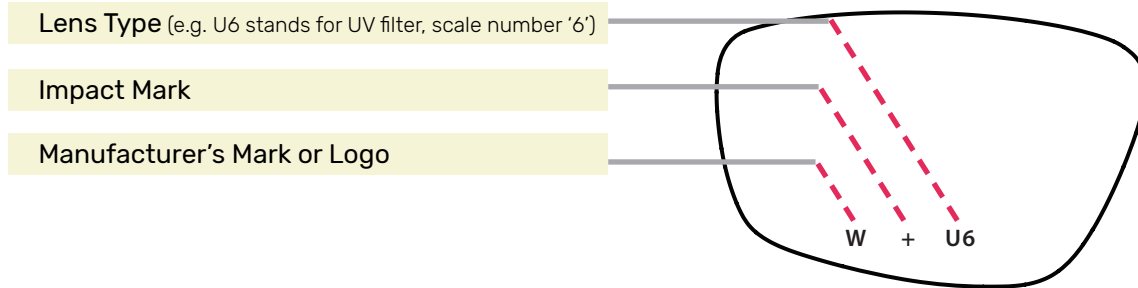
### 3.4 Wearers' comfort & acceptance in accordance with SS473 standards

- Lightweight for prolonged wearing and use
- Good fitting with temple length adjustment
- Good fitting for different nose bridges with temple inclination height adjustment
- Eye and bridge sizes suitable for Western or Asian people
- Pressure points reduced by soft, tri-flex or dual density anti-slip temples
- Well ventilated or with anti-fog features
- Polycarbonate lens must have durable anti-scratch and anti-fog coating for clarity
- Material should withstand tropical climate, high humidity and temperature

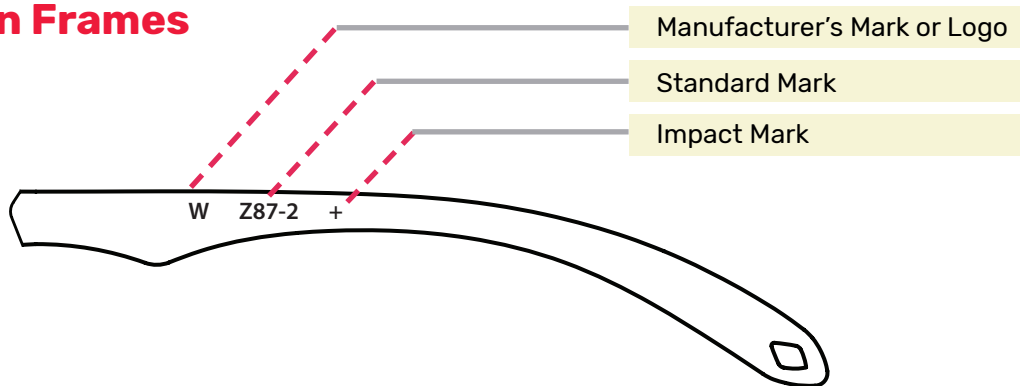
### 3.5 Additional consideration for goggles in accordance with SS473 standards

- Wide vision for panoramic view
- Good face sealing for better protection and comfort
- Wide headband for increased comfort
- Able to wear over prescription spectacles
- Choice of lens material such as acetate, propionate or polycarbonate

## Marking on Lens



## Marking on Frames



## High Velocity Impact

New ANSI Z87.1-2015 allows the use of a steel ball of diameter 6mm (0.24"), travelling at 50.9m/s (167 ft/s) or a steel ball with diameter 6.35mm (0.25") travelling at 45.7m/s (150 ft/s) when conducting the high velocity impact test on the complete devices.

### Safety Prescription (SRX) Lens Material Qualification

Representative SRX lens must be tested to resist high velocity impact using steel ball of either diameter 6mm and 6.35mm as specified in Section 2.3.1.

### Safety Prescription (SRX) Lens Mounting Qualification

Complete SRX eyewear with representative test lens and retention system shall be capable of resisting high velocity impact using steel ball of either diameter 6mm and 6.35mm as defined in Section 2.3.1.

## Protectors Providing Filtration of Optical Radiation

### Special Purpose Filters

Special purpose filters, both tinted and extra dark, marked "S", may or may not comply to requirements for welding, UV and visible light filters, but shall comply with the transmittance requirements for special purpose lenses.

### Visible Light Filters

Protectors marked L1.3 to L3 must meet transmittance requirements of traffic signal recognition and UV transmittance of ANSI Z80.3-2010, American National Standard for Ophthalmics - Nonprescription Sunglasses and Fashion Eyewear Requirements. While protectors marked L4 to L10 are too dark to be used for driving, they shall meet UV transmittance requirements of ANSI Z80.3-2010.

### Transmittance of Non-Lens Components

If a spectacle claims to meet the transmittance requirements of welding, UV and infrared filter lenses, the side shields of the spectacles shall be tested to the maximum scale number of the lens with which they will be fitted. Wraparound lenses which have the side protection as part of the lenses will be subjected to the same testing.

### Angular Dependence of Luminous Transmittance

Requirements for angular dependence of luminous transmittance for welding filters have also been added to address visual effect that welders can find both dangerous and disturbing.

## Droplet and Splash, Dust and Fine Dust Hazard

In ANSI Z87.1-2015, the tests for droplet and splash, dust, and fine dust hazards are intended to determine the capability of the protector to keep liquid splashes or sprays, large dust and fine dust particles, from reaching the wearer's eyes. Eyewear that pass each test are marked additionally with D3, D4, and D5 respectively. (Refer to table 3.5.1)

## Important Notes for Safety Prescription (SRX) Eyewear

### 1. Minimum Lens Thickness of SRX Lens

SRX eyewear must be fitted with impact rated SRX lens with a minimum thickness of 2mm (0.08")

### 2. SRX Optical Requirements - Refractive Power, Astigmatism, Prism and Prism Imbalance for RX Protectors and Magnifiers

SRX lens must be tested according to and comply with the tolerance on refractive power, astigmatism, prism and prism imbalance as stated in ANSI Z80.1-2010, American National Standard for Ophthalmics - Prescription Ophthalmic Lenses Recommendations.

### 3. SRX Lens Mounting Qualification

Complete SRX eyewear with representative test lens and retention system shall be capable of resisting high mass and high velocity impact. A new lens retention test is required of prescription safety laboratories fabricating impact rated SRX eyewear to determine their ability to consistently produce lenses that will be retained in the various frame types they choose to sell. SRX frame manufacturers must also test their frames to this lens retention test.

### 4. SRX Lens Material Qualification

Representative SRX lens must be tested to resist high velocity impact using a steel ball of diameter 6mm (0.24") travelling at 50.9m/s (167 ft/s) or a steel ball with diameter 6.35mm (0.25") travelling at 45.7m/s (150 ft/s).

### 5. SRX Lens Carrier (RX Insert)/SRX Eyewear with Lift Fronts

The complete device with prescription lenses in +5.0 and -5.0 diopters fitted in the carrier, behind the plano eyewear shall be tested. RX lens carrier used behind plano protectors shall be marked with the manufacturer's mark or logo but not any other Z87 markings. Complete devices with SRX eyewear and lift fronts shall be tested with the lift front in the "up" position.

### 6. SRX Side Shield Attachment

SRX eyewear must be equipped with side shields that can be securely or permanently attached to pass the side impact test.





## ANSI/ISEA Z87.1-2015 Standard

The American National Standards Institute (ANSI) has approved and issued the new ANSI/ISEA Z87.1-2015 American National Standard for Occupational and Educational Eye and Face Protection (ANSI Z87.1-2015). This standard went into effect May 28, 2015, and updates the 2010 version. While the scope of the standard remains mostly unchanged, there are a number of modifications that have significant impact. The following outlines these changes and how they impact eye protection and the methods companies use to select safety products.

### Important Changes

ANSI Z87.1-2015 continues to focus on product performance and reflects the need to streamline testing methods to harmonize with global standards to allow new and innovative designs to protect against hazards, meet end-users needs and workplace regulations. This consists of acceptance of protectors known as “magnifiers” and “readers” that have lenses, or portion of lenses that have magnification properties. The new Z87.1-2015 standard fine-tunes the hazard-based structure of choosing protectors, a concept first introduced in 2010. In the revised standard, additional emphasis has been placed on enabling users to select protectors suitable for their working environment and providing end-users with information to facilitate the selection process.

### Optical Requirements of Refractive Powers

ANSI Z87.1-2015 specifies that the telescope and observer shall be qualified by resolving pattern 40 of the test pattern instead of pattern 20. The revised standard states that the average refractive power of lenses with astigmatism is used instead of each meridian.

### Physical Requirements of Drop Ball Impact Resistance

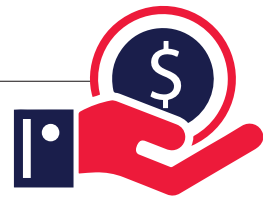
ANSI Z87.1-2015 elaborates on the specifications of testing apparatus used in the drop ball test. The projectile will be dropped from a height of 127cm (50”) through a loose fitting guide tube with a smooth internal diameter ending 10cm (4”) above the point of contact. The revised standard eliminates the need to perform drop ball testing for a protector that is first tested to and meet the requirements of impact resistance.

## SS473:2011 Singapore Standard

According to clause 5.3 of the SS473: Part 2:2011 Singapore Standard, eye protectors (plano and prescription eye protectors) must comply and be marked in accordance with any of the following standards or their equivalent: ISO, EN (Europe), ANSI (USA), CSA (Canada), AS/NZ (Australia/New Zealand) and JIS (Japan). All WORKSafe® eyewear comply with SS473 as well as ANSI/ISEA Z87.1 standards, and, if indicated, EN166 standards.

## Purchase Care

**Follow these care instructions for long-lasting comfort and protection!**



1. To avoid breaking or bending your spectacle frame, handle your glasses with both hands. Pull both ear rails simultaneously when putting on or taking off your glasses.
2. When not in use, store your glasses in a case like the **WORKSafe® SRX**
3. If you haven't got a case, be sure to place your WORKSafe® safety eyewear upright, so the lenses don't get scratched or scuffed.
4. Clean your glasses regularly with microfiber cloths or with WORKSafe® Kleanlens® solution; or by washing them with mild soap and water.
5. Avoid exposing your glasses to extreme temperatures, under direct sunlight, or during your bath. Smoke, heat and steam can damage the lens coating.