



ADVANCED ENVIRONMENTAL MEASUREMENTS

✓ Surveyed

✓ Documented

✓ Reported

Features:

- View / Log 6 Particle Sizes Simultaneously
- 0.3 - 25 μm
- 0.1 CFM (2.9 LPM) Flow Rate
- Optional $\mu\text{g}/\text{m}^3$ Concentration Mode
- Touch Screen Interface
- Removable / Rechargeable Li-Ion Battery
- Optional Temperature/Relative Humidity Probe
- Internal Audible Alarm
- On-board Memory (stores 3,000 samples)
- Belt clip for walk-thru surveys or attachment to WolfPack™ Area Monitors
- 2-Year Warranty
- Supplied with GrayWolf's WolfSense® PC Software for data download and analysis
- Optional WolfSense ARG Automated Report Generation Software
- Interfaces to GrayWolf's DirectSense®, WolfPack and AdvancedSense™ Systems for Enhanced Logging and Expanded Features

Benefits:

- Easy to Use (User-Friendly Interface)
- Expands your GrayWolf DirectSense, WolfPack, and AdvancedSense parameters
- Low Cost of Ownership



Use the GW-3016 as a stand-alone particle counter, plug it into a mobile computer or into a sophisticated WolfPack/AdvancedSense system for simultaneous connection with GrayWolf's DirectSense probes.

- Ergonomically designed and lightweight, the GrayWolf GW3016 is the most advanced handheld particle counter on the market.
- Easily download data from the GW3016 using the included WolfSense PC Software to create high quality trend/bar graphs/tables, use WolfSense's advanced organizational features or simply export to Microsoft Excel®.
- Optionally add Advanced Report Generator software for extremely efficient, automated reporting of particle count data.
- Offering 6 channels of simultaneous particle counting, the GW3016 displays both cumulative and differential particle count data on its easy-to-read 3.8" (9.65 cm) touch screen.
- Alternate displayed/logged readings from particle counts to approximate mass concentration ($\mu\text{g}/\text{m}^3$) with the optional model GW-3016A.
- Monitor particulate levels even in those "hard-to-reach" areas where two-handed operation is unsafe.

GW-3016

6-Channel Particle Counter



GRAYWOLF®
SENSING SOLUTIONS
PH. 1-203-402-0477
FAX: 1-203-402-0478

EMAIL:
SALESTEAM@GRAYWOLFSENSING.COM

WEBSITE:
WWW.GRAYWOLFSENSING.COM

GW-3016



6-channel Particle Counter

Specifications: GW3016

Size Range: 0.3 - 25.0 μm

Channel Sizes: Standard: 0.3, 0.5, 1.0, 2.5, 5.0, 10.0 μm

Optional: 0.3, 0.5, 1.0, 3.0, 5.0, 10.0 μm

Optional: 0.3, 0.5, 0.7, 1.0, 2.5, 5.0 μm

Optional: 0.3, 0.5, 0.7, 1.0, 2.0, 5.0 μm

Optional: 0.3, 0.5, 1.0, 5.0, 10.0, 25.0 μm

Flow Rate: 0.1 CFM (2.83 LPM)

Counting Efficiency: 50% @ 0.3 μm ; 100% for Particles >0.45 μm (per JIS)

Laser Source: Laser Diode

Zero Count Level: <1 Count / 5 minutes (per JIS)

Concentration Limits: 4,000,000 Particles / ft^3 @ 5% Coincidence Loss

Calibration: NIST Traceable

Count Modes: Automatic, Manual, Beep, Concentration, Cumulative/Differential

Data Storage (on-board): 3,000 Sample Records, up to 200 user-defined, Alpha-numeric location labels, Rotating Buffer (includes particle and environmental data, plus location and time)

Communication Modes: RS-232 via RJ-45 to PC or Printer (or to Mobile PC, WolfPack or AdvanceSense w/WolfSense Software)

Touch Screen Display: 3.8" (9.65cm, Monochrome 320x240)

Alarms: Internal, Adjustable Alarm Buzzer, Alarms on Counts, Low Battery, Sensor Failure

Sample Inlet: Isokinetic Sampling Probe

Sample Output: Internally Filtered to HEPA Standards (>99.997% @ 0.3 μm)

Vacuum Source: Internal Pump, Automatic Flow Control

Enclosure: High Impact Injection Molded Plastic (with handle)

Power: 100-240V, 50-60Hz

Battery: Li-Ion, Removable & Rechargeable

Dimensions: 8.75" x 5.0" x 2.5" (22.23 x 12.7 x 6.35 cm)

Weight: 2.2lb (1kg)

Environmental Conditions

Operating: 50°F to 104°F (10°C to 40°C) / 20% RH to 95% RH non-condensing

Storage: 14°F to 122°F (-10°C to 50°C) / Up to 98% RH non-condensing

Accessories Included:

Operating manual on CD, Removable battery, Isokinetic Sample Probe (direct mount), Purge (zeroing) Filter, 110/240V AC charger/adaptor, Belt Clip, WolfSense PC Data Analysis Software.

Options:

GW-3016A Switchable display from particle counts to mass concentration ($\mu\text{g}/\text{m}^3$)

PC-GW6-KIT also includes hardshell carrying case, mobile PC interface card and WolfSense PPC (or LAP) Software for interface to mobile PCs.

PC-GW6-RHCF Temperature/Relative Humidity Probe

32-122°F (0-50°C), +/- 1°F (0.5°C), 15-90% +/- 2% RH

WolfSense ARG Advanced Reporting Software

PCC-GW6 Hardshell case. Dimensions:

38.1cm x 33.0cm x 17.8cm (15" x 13" x 7")

ACC-SCCF Serial interface card for interface to mobile PCs via CF card slot

WS-PPC WolfSense application software for PocketPC (order **WS-LAP** for XP/Vista/WIN7 version)

MEASURE SMART

REPORT EFFICIENTLY



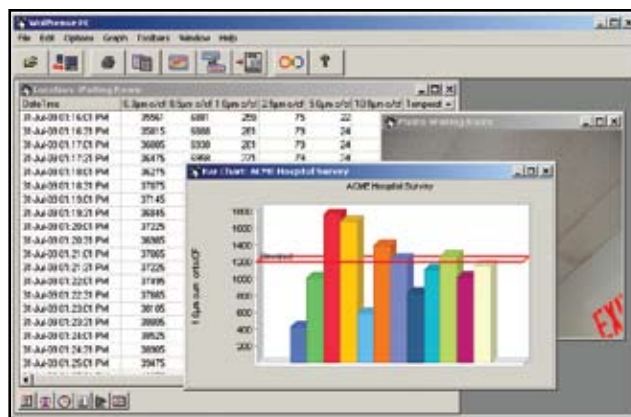
Optional
PC-GW6-RHCF
%RH, °F/°C probe
(removable)



PCC-GW6
Hard-Shell
Case



Example Mobile
PC Screen (optional
interface enables
GrayWolf's in-situ
documentation features)



Example
WolfSense
PC Screen
data
transfer
& analysis
software
(supplied as
standard)

Example
WolfSense
ARG report
(optional
automated
report
generation
software)



**GRAYWOLF
SENSING SOLUTIONS**

6 RESEARCH DRIVE
SHELTON, CT 06484 USA
PH. (1)203-402-0477
800-218-7997
FAX: (1)203-402-0478

EMAIL: SALESTEAM@WOLFSENSE.COM

WWW.WOLFSENSE.COM

**GRAYWOLF
SENSING SOLUTIONS**

TUAMGRANEY INDUSTRIAL ESTATE
TUAMGRANEY, CO CLARE, IRELAND
PH. (353)61921736
FAX: (353)61921528