

PIG Multi-Purpose Epoxy Putty

PIG Multi-Purpose Epoxy Putty plugs or seals practically anything that leaks. It patches holes and cracks and mends metals, wood, glass, masonry, ceramics and many plastics. It can also be drilled, tapped, filed, sanded and painted like metal. Functional cure occurs in 60 minutes.

Instructions

For best results use a detergent or degreaser to first clean the surface, then roughen the surface with a file or coarse sandpaper for best adhesion.

Mixing Directions

- Step 1** — Break or cut off desired amount.
Step 2 — Twist and knead until uniform color is achieved — no streaks.
Step 3 — Apply **AT ONCE** to surface (3-5 minute work life).
Step 4 — Remove excess before it hardens.

Tips

- Starts to harden 2 minutes after mixing. Repair should be in place before hardening starts
- A smooth finish can be achieved by rubbing with wet finger or damp cloth before hardening begins.
- Can be drilled, filed, tapped, sanded and machined after an hour of curing (hardening).
- Wash hands thoroughly with soap and water after using.

Applications & Uses



Plumbing Repairs
Sink traps, oil and water tanks, pipe joints, drain leaks, etc.



Auto Repair
Metal strips, small dent repair, fuel tanks, radiators, etc.



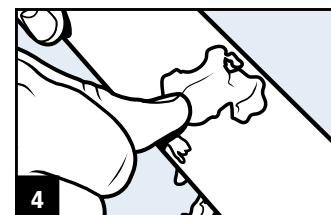
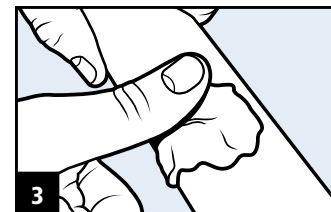
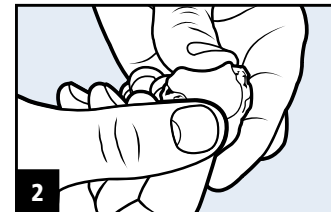
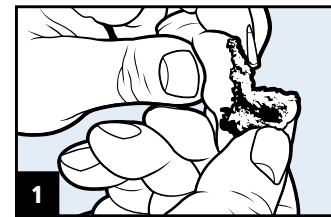
Custom-Formed Gaskets
For permanent sealing and bonding.



Electrical
Use in place of tape, ceramic connectors, knobs, etc.



Underwater Repair
Concrete swimming pools, tanks, etc.



Instrucciones

Para obtener mejores resultados, use un detergente o desengrasante para limpiar primero la superficie; luego raspela con una lima o lija gruesa para proporcionar la mayor reparación.

Instrucciones para el mezclado

- Paso 1** — Desprenda o corte la cantidad necesaria.
Paso 2 — Retuerza y amase hasta lograr un color uniforme, sin vetas.
Paso 3 — Aplique **DE INMEDIATO** sobre la superficie (funciona durante 3-5 minutos).
Paso 4 — Remueva el exceso antes de que endurezca.

Consejos

- Comienza a endurecer 3-5 minutos después del mezclarse. La reparación debe completarse antes de que comience a endurecer. El curado final ocurre a los 60 minutos.
- Para obtener un acabado suave, frótese con un dedo mojado o un trapo húmedo antes de que comience a endurecer.
- La mansilla puede taladrarse, rellenarse, golpearse, lijarse o fresarse una hora después de su fijación (endurecimiento).
- Lávese siempre las manos con agua y jabón después de utilizarla.



Certified by NSF International to NSF/ANSI Standard 61 for drinking water contact.

Warning: Harmful if swallowed, eye irritant. Contains epoxy resins and amine. Keep away from children. If swallowed, call physician. For eyes, flush with water and call physician.

Advertencia: Este producto es peligroso si se lo ingiere si entra en contacto con los ojos. Contiene resinas y aminas. Mantén-gale fuera del alcance de los niños. En caso de ingestión consulte con un médico. Si entra en contacto con los ojos, lávelos con agua y consulte con un médico.

Storage — Best conditions are at room temperature. Freezing, humidity, and high temperatures will not affect performance of unused putty. If frozen, warm for a few minutes first for easier mixing.
Shelf Life — Tests have shown this product lasts 24 months when stored in its original sealed tube.

Performance Data

Shelf Life at 75°F (24°C), minimum 24 months
Shore D Hardness at Full Cure (24 hrs) 75
Lap Shear Tensile Strength On Steel (1" x 1" x 1/16") . . . 900 lbs (6.2 MPa)
Compressive Strength 8,000 psi (55 MPa)
Density 15.8 lb/gal, 1.9 gm/cm³ Shrinkage <1%
Non-Volatile Content 100%
Electrical Resistance 30,000 megohms

Dielectric Strength 300 volts/mil
Upper Temperature Limits
Continuous . . . 250°F (121°C)
Intermittent . . . 300°F (149°C)
Chemical Resistance — Resistant to hydrocarbons, ketones, alcohols, esters, halocarbons, aqueous salt solutions and dilute acids and bases.



New Pig

One Pork Avenue
Tipton, PA 16684-0304

newpig.com

North America: **1-800-468-4647**

Europe: **+31 (0)76 596 92 50**

PIG, PIG logo are registered trademarks in USA and other countries. See tm.newpig.com

UK: **0800 919 900**

Outside North America: **+1-814-684-0101**