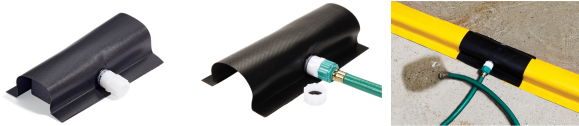


Barrier Draining Plug

PLR289 For Build-A-Berm Barrier

Remove rainwater and collected liquids from your Build-A-Berm layouts with this draining plug.

- Add this plug to your Build-A-Berm layout and drain your barrier with any standard garden hose
- Nylon cap with neoprene gasket blocks flow during normal use
- Non-absorbent vinyl cover resists oils, coolants and most chemicals
- PVC tubing allows pump-free drainage of rain, snowmelt and other innocuous fluids
- Works with 2"-high Build-A-Berm Barrier sections



Specifications

Use With	Build-A-Berm Barrier
Color	Black
Dimensions	5.5" W x 10" L x 2" H
Sold as	1 each
Weight	1 lb.
# per Pallet	63
Composition	Skin - PVC-Coated Fabric Internal Tubing - PVC Hose Adapter - Nylon Hose Cap - Nylon w/ Neoprene Gasket Bulkhead Hose Barb Fitting - PVC Gasket - Neoprene
UNSPSC	24101907

Metric Equivalent

Dimensions	14cm W x 25.4cm L x 5.1cm H
Weight	.5 kg

Technical Information

Technical Documents

PIG Build-A-Berm® Barrier

Instructions for Using PIG® Build-A-Berm® Barrier

White paper – Should I be Worried about SPCC? 8 Things you need to know.

Instructions for Draining Plug for PIG Build-A-Berm Barrier

40 CFR 264.175



New Pig

World's best stuff for leaks, drips and spills.

One Pork Avenue • Tipton, PA 16684-0304

1-855-493-4647 • Fax: 1-800-621-7447 • newpig.com • hothogs@newpig.com