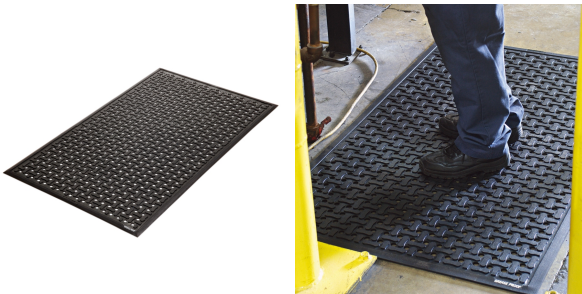


Comfort Flow Anti-Fatigue Mat with Antimicrobial Agent

FLM419 For Light Chemical Splash, For Heavy Oil/Grease Contact, 2' x 3' x 0.437"

Lightweight, NSFI Certified, anti-microbial construction is great for kitchens, showers and other frequently cleaned areas.

- Flow-through holes drain quickly in wet environments to help improve footing
- Beveled edges on all sides help to minimize trip-and-fall accidents
- Slip-resistant surface helps reduce fall accidents
- Antimicrobial agent helps prevent bacterial growth
- Thin, lightweight mat is easy to move, clean and roll
- Made from durable, high-density, closed-cell nitrile rubber
- NSFI Certified design is ideal for kitchens, bar areas, food processing areas, showers or washrooms
- Mat dimensions are approximate



Specifications

Drainage Holes	With Holes
Color	Black
Dimensions	2' W x 3' L x 0.437" H
Chemical Contact	For Light Chemical Splash
Oil/Grease Contact	For Heavy Oil/Grease Contact
Beveled Edge	Yes
Brand	Andersen
Grit Surface	No
Safe for Welding Areas	No
Sold as	1 each
Weight	6.02 lbs.
# per Pallet	60
Composition	High-Density, Closed-Cell Nitrile Rubber w/ Antimicrobial Agent

Application	Wet Applications
Static Dissipative	No
UNSPSC	52101510
Pigalog® Page Number	Page 234

Metric Equivalent

Dimensions	61cm W x 91.4cm L x 11.1mm H
Weight	2.7 kg

Technical Information

Certifications, Approvals and Ratings

NFSI Certified

Technical Documents

[Andersen Nitrile Mats](#)



One Pork Avenue • Tipton, PA 16684-0304
 1-855-493-4647 • Fax: 1-800-621-7447 • newpig.com • hothogs@newpig.com