

INTRINSICALLY SAFE

LOCATION BEACON



RESPOND TO INDOOR INCIDENTS WITH PRECISION

Precise positioning empowers emergency response

In certain facilities, GPS signals alone may not provide sufficient positioning precision to locate employees during an emergency response. In such circumstances, every second counts and time wasted searching for someone could mean the difference between rescue and recovery.

Blackline Safety addresses this challenge with Location Beacons — compact wireless positioning transmitters. Beacons are installed where employees operate, from one per floor to one per room depending on facility size and operations. Beacon locations are then recorded on custom floor or site plans on a live map in Blackline Live, Blackline's safety monitoring software, so you always know exactly where your people are in context of their surroundings. Beacons are self-powered and affordable, taking only minutes to install without any calibration or triangulation.

Each beacon broadcasts a unique identity number that is received by Blackline Safety's monitoring devices, including G7c and G7x. When personnel are within proximity of beacons, monitoring devices store the nearby beacon identities and reports their location to Blackline Live.

Protect the safety of your workforce with Loner Beacon indoor location technology.

Features



Intrinsically safe



Precise location technology



Floor plans and location names



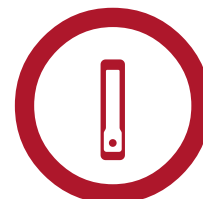
Long battery life



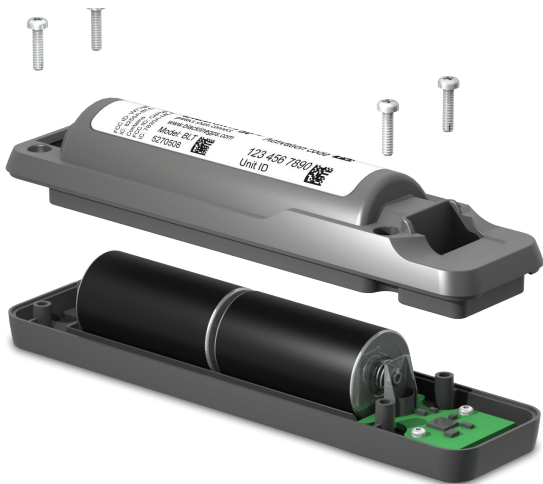
IP65 sealed



Easy setup



Compact design



Easy Location Beacon Battery Replacement

Alert Management

Victoria Souter

Company: Blackline
Device ID: 2564001125
Mobile: 403-555-1234
Work: N/A
Home: N/A

Emergency Alert
2015-05-07 15:43:15 MDT

Choose a reason for resolving

Resolve Alert

Notes

Add a note...

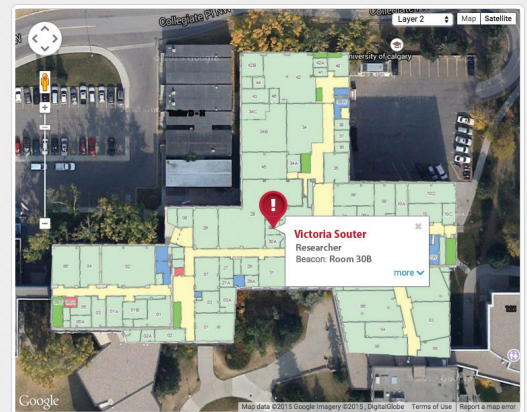
Post

Brendon Cook
2015-05-07 15:43:29 MDT

Cannot reach the employee, escalating to the supervisor.

Brendon Cook
2015-05-07 15:44:32 MDT

Calling out to the employee



Response Protocol

Responders

Info

Fall Detection, No-motion Detection, and Missed Check-in Alert
1a. Call emergency services (9-1-1 where possible)
1b. A second agent is to call the worker to verify potential incident
2. Escalate to supervisor if employee is unreachable
3. Escalate to emergency services if the supervisor is not available.

Custom floor and site plans are overlaid on top of the interactive Google map

DETAILED SPECIFICATION

Size & Weight

Size: 161 mm H x 40 mm W x 32 mm D (6.4" x 1.6" x 1.3")

Weight: 210 g (7.4 oz)

Mounting

Mounting bracket included

Mounting methods: screws, tie straps, adhesive

Mounting options: walls, wall corners, poles, etc.

Buttons & Indicator Lights

Single button for powering on/off plus configuration

Green LED for power indication and configuration

Red LED for low battery indication

Wireless Communication

Indoor positioning radio: 2.4 GHz to supported Loner safety monitoring devices

Location Technology

Low-power continuous beacon signal enables

Loner safety monitoring device proximity

detection

Beacon Signal Range

Four configurable signal range levels between 4.5 m and 36 m (15 ft and 120 ft) line of sight (less range when obstructed)

Notification Messages

Low Battery communicated by Loner or G7 devices

Power & Battery

Batteries: two C-cell alkaline (included)

Battery life: 5 years continuous operation at highest power setting, no wiring required

Environmental

Storage temperature: -40 to 65° C (-40 to 149° F)

Operating temperature: -20 to 55° C (-4 to 131° F)

Ingress Protection: IP65

Regulatory Compliance

Class I, Div 1, Groups A-D, T4

ATEX: CE II 1G, Ex ia IIC T4 Ga

IECEx: Ex ia IIC T4 Ga

RoHS

FCC ID: W77BCN

IC: 8255A-BCN

Device Requirements

Blackline Live Portal user account with activated, compatible Loner or G7 devices

Warranty

One year limited factory warranty

Wireless Coverage and Activated Service Plans

2.4 GHz operation regions: global

Service plan options: no service plan required

Blackline Live Web Application

Features Include: Beacon map editor, alarm banner, event history, device location mapping, device management, alert & notification settings and more
Comprehensive safety alert life cycle management: includes alert configuration profiles, safety protocol, and emergency contacts

All specifications subject to change without notice.

© Copyright 2016 Blackline Safety Corp. All trademarks, product names and logos are the property of their respective owners.

NORTH AMERICA | Toll-free: 1-877-869-7212 | sales@blacklinesafety.com

EUROPE | Phone: +44 1787 222684 | eusales@blacklinesafety.com

INTERNATIONAL | Phone: +1-403-451-0327 | sales@blacklinesafety.com

blacklinesafety

www.BlacklineSafety.com

0205/R2/2016-12-05