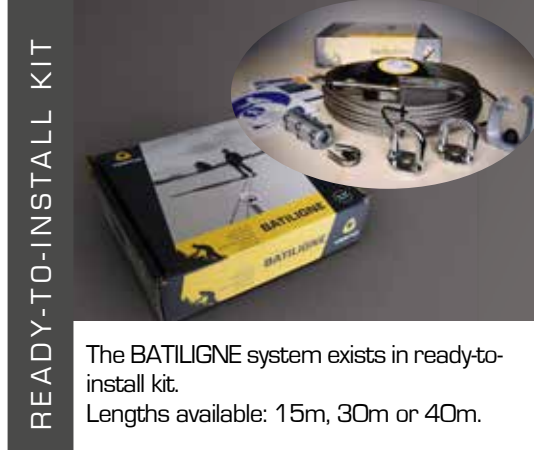
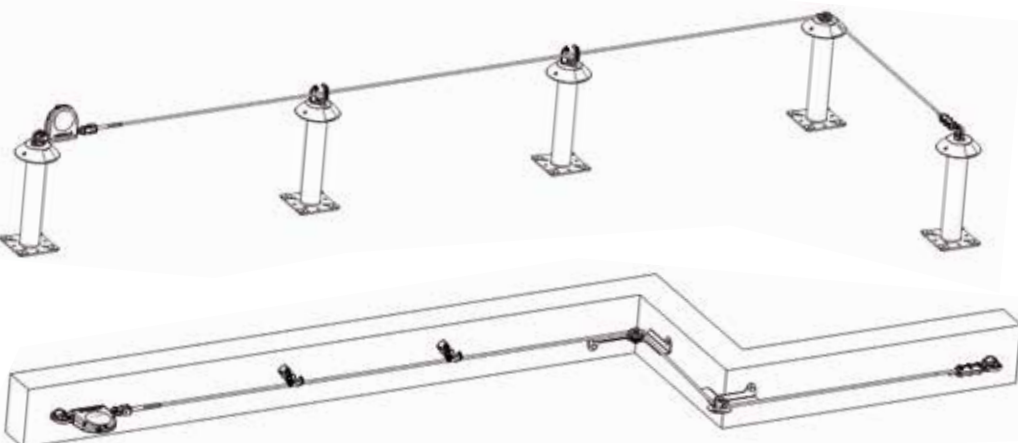




## PRODUCT ADVANTAGES

- ▲ Can be used with a simple karabiner
- ▲ Always clipped passing the supports
- ▲ Distance between supports is certified up to 15m
- ▲ Visual indicator which permits an optimum adjustment of the cable tension
- ▲ Ease of installation, thanks to the cable terminations which can be crimped in a press or attached on site without special tools
- ▲ Resistance to corrosion, due to the stainless steel components



READY-TO-INSTALL KIT

The BATILIGNE system exists in ready-to-install kit.  
Lengths available: 15m, 30m or 40m.

## SAFETY WITHOUT UNCLIPPING

The operator, clipped to the cable, can move around without having to unclip himself when passing the intermediate supports.



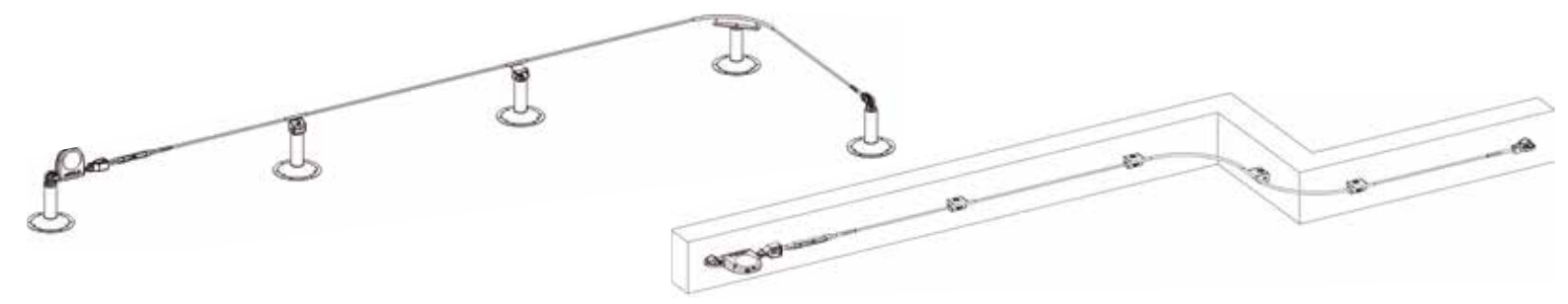
**CALCULATION PROGRAMME**

NOTE DE CALCUL LINE DE VIE  
VERTIC  
CONFORMITE EN 795 EN 3601  
Permet de calculer la ligne de vie en fonction des données de l'EN 795 et de l'EN 3601.  
Le logiciel de calcul VERTIC permet de dimensionner la ligne de vie en fonction des données de l'EN 795 et de l'EN 3601.  
Le logiciel de calcul VERTIC permet de dimensionner la ligne de vie en fonction des données de l'EN 795 et de l'EN 3601.  
Le logiciel de calcul VERTIC permet de dimensionner la ligne de vie en fonction des données de l'EN 795 et de l'EN 3601.

According to the requirements of the EN 795, VERTIC offers a specific programme to calculate its lifeline systems.

## COMPONENTS BATILIGNE®

<p><b>Energy absorber</b></p> <p>Fitted at the end of the lifeline, it reduces the forces applied to the structure.</p>	 <p><b>ABS55</b></p>	 <p><b>ES-2</b></p>	<p><b>Crimped articulated end piece</b></p> <p>Extremity part of the lifeline with the cable crimped at points.</p>
<p><b>Intermediate piece</b></p> <p>Spacing 15m maximum. Allows the passing of the karabiner without unclipping.</p>	 <p><b>BA.INT2</b></p>	 <p><b>BA.ANG2</b></p>	<p><b>Corner piece</b></p> <p>Allows making adjustable corners. Can be mounted on façade with the façade support (BA.ANGSA).</p>
<p><b>Manual end piece</b></p> <p>Manually fitted to the end of the cable without special tools.</p>	 <p><b>BA.EXT2</b></p>	 <p><b>BA.ANGSA</b></p>	<p><b>Corner support for façade</b></p> <p>Enables corner piece to be mounted on a salient or reentrant corner. Adjustable according to the corner angle.</p>
<p><b>Manual tensionner</b></p> <p>Allows to adjust the pretension of the lifeline to 50kg. Includes a tension indicator. Manual assembling, without any specific tools.</p>	 <p><b>BA.TSL2-50</b></p>	 <p><b>C18</b></p>	<p><b>Cable</b></p> <p>8mm , 7x7 stainless steel cable. VERTIC Bolduc incorporated in the core of the cable for better traceability.</p>
<p><b>Crimped tensionner</b></p> <p>Allows to adjust the pretension of the lifeline to 50kg. Also allows controlling if the lifeline is over or under tensioned.</p>	 <p><b>BA.TSL3-50</b></p>	 <p><b>PS</b></p>	<p><b>Safety sign</b></p> <p>Must be installed at the access of the system. Allows the identification and the control of the system.</p>



## PRODUCT ADVANTAGES

- ▲ Ideal when the operator is working at some distance from the device
- ▲ A specific carriage allows connection at any point of the cable and movement without any restriction
- ▲ Careful design and finish of the line give perfect integration with the various architectural constraints
- ▲ Distance of 15m between 2 intermediate brackets
- ▲ Visible safety, thanks to the built-in tension and fall indicators
- ▲ Ease of installation
- ▲ Resistance to corrosion, made of stainless steel



## THE CARRIAGES

### Single moving carriage

The VERTIC moving carriage permits uninterrupted movement of the operator at any distance from the life line.

Has a large diameter hooking eyelet, allowing the use of any type of connector.

### Carriage with roller bearing kit

For heavy loads, a roller kit can be added to the carriage.

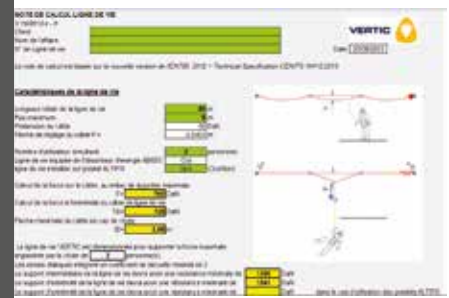
Facilitates the move when using a self-retractable block, or a long lanyard.



CMS3

CMS3-KR

CALCULATION PROGRAMME



According to the requirements of the EN 795, VERTIC offers a specific programme to calculate its lifeline systems.

## VERTIC EXCLUSIVITY: COMBILIGNE®

### MULTI-PURPOSE SOLUTION

Since all configurations are not exclusively horizontal or vertical, VERTIC has patented an anti-fall system that can be used from 0° to 180°.



CMBR

CMB

## PATENTED BIDIRECTIONAL OR UNIDIRECTIONAL CARRIAGES

The VERTIC carriages allow going through the intermediate supports of the lifeline without unclipping.

The carriages ensure a bidirectional or unidirectional blocking.

The connection of the carriage can be done at any point on the cable.

## COMPONENTS ALTLIGNE®

### Energy absorber



ABS55

Fitted at the end of the lifeline, it reduces the forces applied to the structure.

### Fix intermediate piece



IFR90

Rigid piece enabling the carriage to pass easily on both sides of the lifeline without unhooking. Several possibilities of orientations.

### Moving intermediate piece



IMR

The mobility of the piece enables the operator to work on both sides of the line, without unclipping.

### Pretensioner



PND-50

Allows to adjust the tension of the cable at 50kg. Integrated fall indicator.

### Crimped tensioner



TSL3

Allows lifeline tensioning at the extremity of the cable. The open cage facilitates the visual control on the extremity and the sealing of the line.

### Manual tensioner



TSL2

Allows tensioning the lifeline at the extremity of the cable, without any specific tool. The open cage facilitates the visual control on the extremity and the sealing of the line.

ES-2



### Crimped articulated end piece

Extremity part of the lifeline with the cable crimped at points.

EC



### Manual end piece

Can be installed manually at the end of the cable, without using any specific tool, nor unstranding the cable.

ANG



### Angle piece for post

The corner can be adjusted on site, while cutting the extremities of the tube up to an angle of 45°.

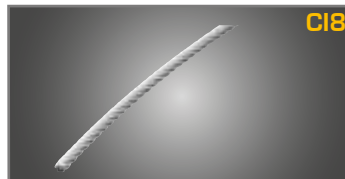
A90 / A135



### 90° or 135° angle piece

Can be installed on a façade with the façade support (R.EQG).

CI8



### Cable

8mm , 7x7 stainless steel cable. VERTIC Bolduc incorporated in the core of the cable for better traceability.

PS



### Safety sign

Must be installed at the access of the system. Allows the identification and the control of the system.

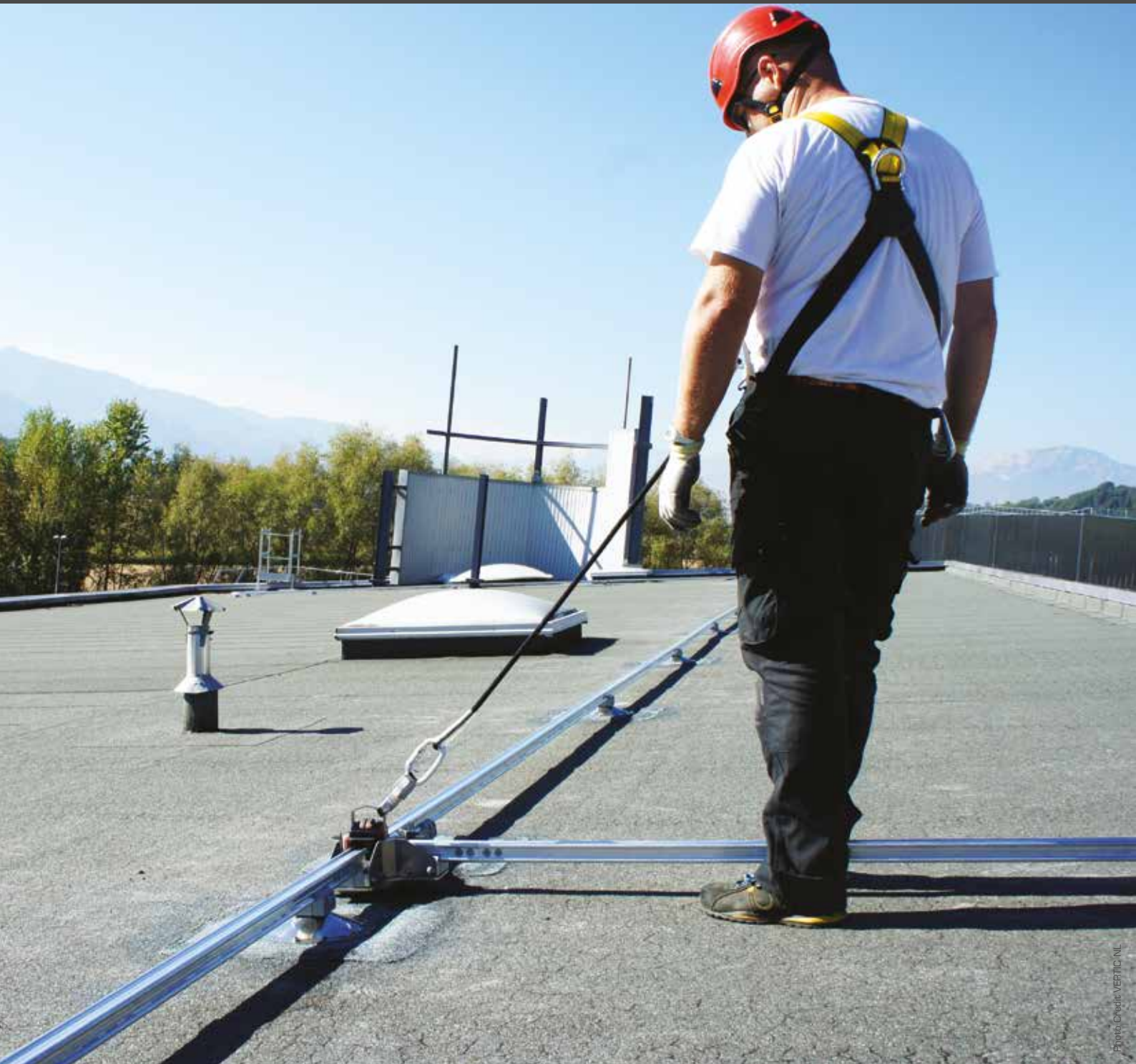


Photo: Credit VERTIC, NL

## PRODUCT ADVANTAGES

- ▲ Ideally suited for use in raised installation, on the under-surface of the roof, or when the fall clearance is incompatible with a cable system
- ▲ Ideal for working at a distance, or in association with a high weight block
- ▲ Various routes may be used, thanks to the switch which enables continuous movement
- ▲ Reduced height of fall owing to the rigidity of the system
- ▲ Can be installed on the majority of the roofs, thanks to the ALTIFIX supports suitable for the rail system

Can be specially bent upon request





## Several possible uses



Lateral circulation

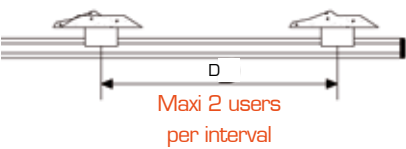


Circulation on the top of the rail



Overhead position

## Recommendations for use



D = 4 meters for using the rail only as a fall arrest system

D = 2 meters recommended for suspension use

## Ball bearing carriage

The mobile VERTIC carriage is made to roll under load. It allows mobility when working in suspension, or associated with a self-retractable lanyard.

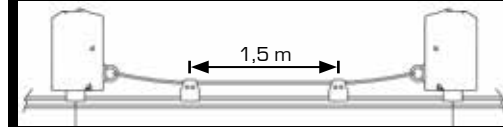
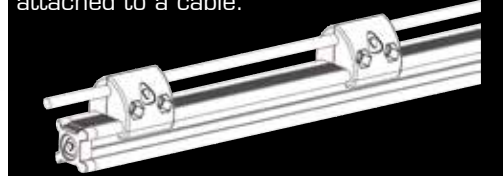


R.CF3



## ALTIRAIL/CABLE combined configuration

For special applications where there is no support available, the rail may be attached to a cable.



## MOTORIZED SWITCH

Ensures the safety of warehouses with a significant height. The switch can be used and activated at a distance thanks to a remote control.



## COMPOSANTS ALTIRAIL®

### Aluminium rail

R.RAIL3



Supplied in 3m length, drilled and milled.

R.AIG3D/R.AIG4D



### Switches

Allow a continuity of movement, and the change of circulation of the carriage. Available in 3 or 4 directions.

### Entry/Exit piece for carriage

R.RO



Can be installed at any location on the rail, to allow the installation of the different carriages.

R.CF2



### Rail carriage with rollers

The mobile VERTIC carriage is fitted with multiple rollers to provide perfect movement, whatever position is used.

### Retractable end stop

R.BE



This end stop enables the carriage to be fitted at the end of the rail. Automatic locking.

R.A90E/R.A90S



### 90° corner for lateral movement

Interior or exterior angle to allow the carriage to circulate sideways.

### Fixed end stop

R.EXTF



Blocks the carriage at the end, securing the system. Finishes the extremity of the rail nicely.

R.A90S2 / R.A90E2

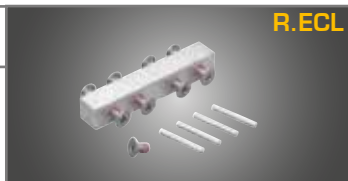


### 90° corners for movement on under surface

Interior or exterior angle to allow the carriage to circulate under-surface.

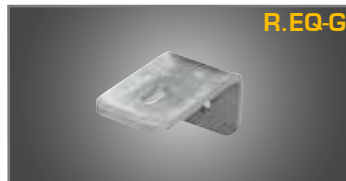
### Rail coupling block

R.ECL



Allows assembling two lengths of rails. The 4 pins ensure a perfect lining up of the rail.

R.EQ-G

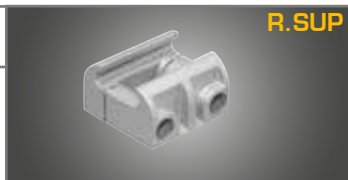


### Mounting angle

Allows mounting the rail on a facade, when circulation is done under-surface.

### Opening support

R.SUP



Made of copper-aluminium, it facilitates the fitting and removal of the rail. Also permits free expansion of the rail.

R.PS



### Safety sign

Must be installed at the access of the system. Allows the identification and the control of the system.