

Miller DuraHoist™ Two-Piece Adjustable Upper Mast

Model: DH-23 (30-in. – 48-in. Offset)

Description

The Miller DuraHoist Two-Piece Adjustable Mast system comprised of the DH-23 and DH-22 Series (Lower Mast Extensions), are designed to provide additional solutions when extra operating reach is required. The Two-Piece Mast system allows use of components in various configurations and applications. Multiple winches and/or self retracting lifeline systems may be mounted as required. Tool-less design breaks the system into lightweight, manageable components for storage, transport, and setup.

Materials

General Construction:	Welded Aluminum
Weld Certification:	AWS
Hardware:	Gr.5, Zinc Plated
Material Structure:	6061-T6, 5052-H32, 7075-T6 Aluminum, Black Acetal, White UHMW Polyethylene
Block Anchor:	304 Stainless Steel
Finish:	Safety Yellow Powder Coat

Technical

Rated Capacity: 450 lbs (204kg)
Working load limit @ minimum 4:1 Design Factor

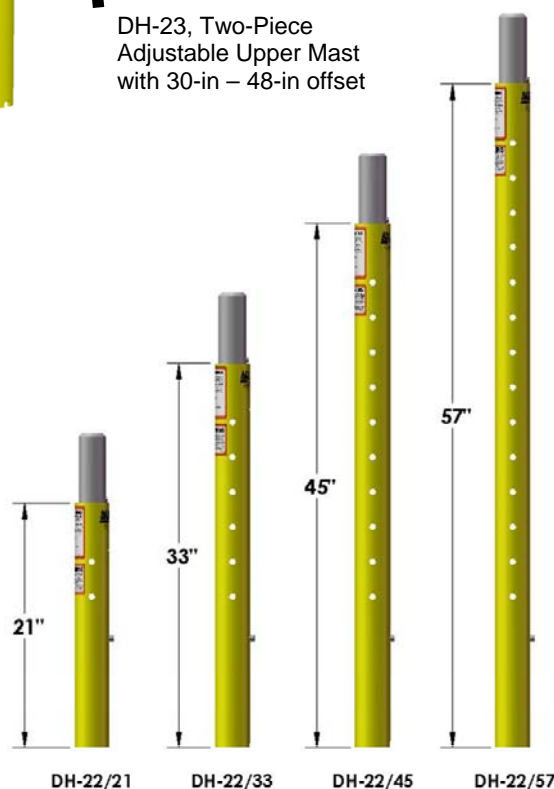
Proof Load Ratings

Anchor Points

A) Standard

Pin Position 1,2,3 and 4 1,800lb (8kN)

Weight 29 lbs (13.2 kg)



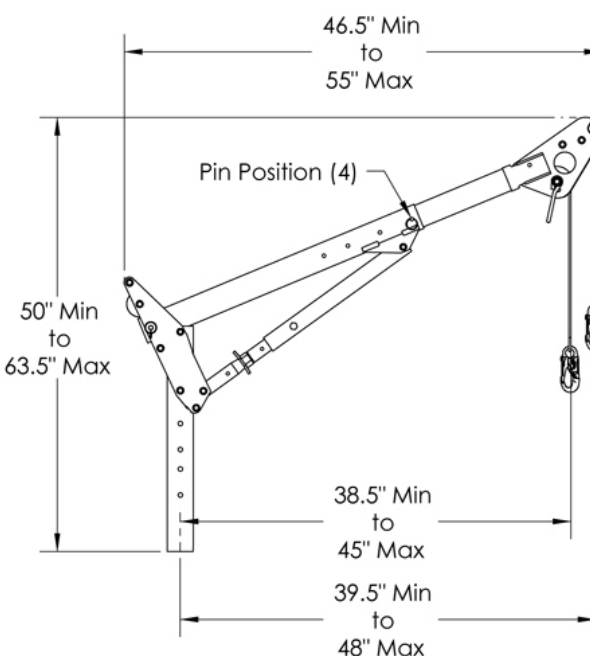
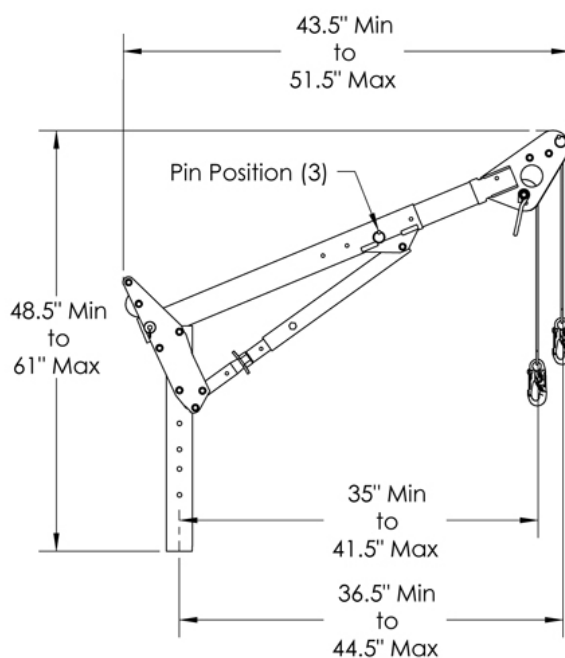
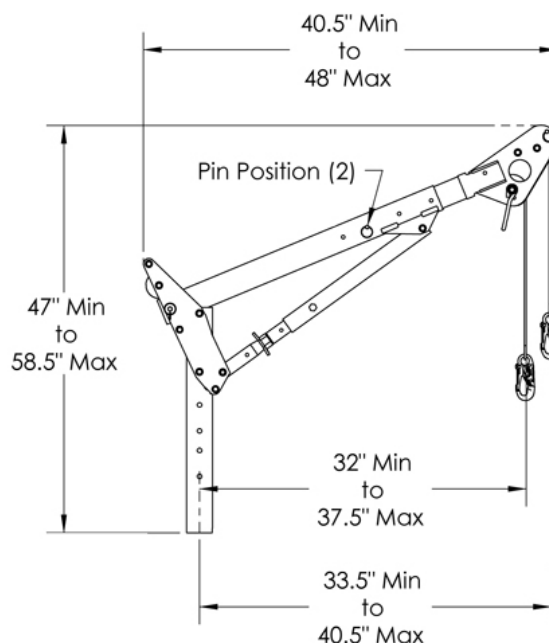
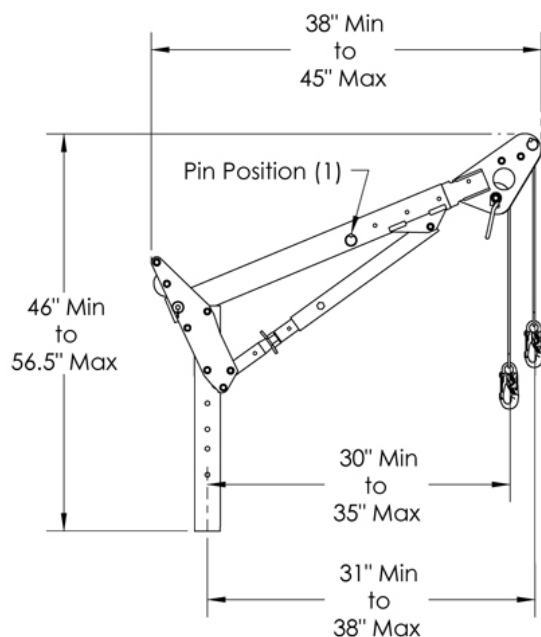
Above: DH-22 Series, Lower Mast Extensions

Application Restrictions

1. All winch and block mounting parts and hardware must be supplied or approved by Miller.
2. Retractable devices or shock absorbers must be installed and used in accordance with the manufacturer's instructions.
3. This mast must be used with bases or sleeves approved for use with the applicable mast offset. (not for use with the Manhole Collar, DH-11; Vehicle Hitch Mount Sleeve, DH-12; or Three-Piece Base, DH-4)
4. Where required by regulation, each installation must be approved to applicable standards by a qualified engineer.
5. All equipment must be set up and operated under the supervision of a competent person according to the manufacturer's instructions.
6. Maximum of **two** Lower Mast Extensions (DH-22 Series) can be combined not exceeding 78-in. when used with Two-Piece Adjustable Upper Mast (DH-23). Overall height of complete system not to exceed 146-in.
7. Winches and blocks **MUST NOT** be mounted in the front position on lower mast extensions (DH-22 Series). Rear mounting is allowed at any point providing there is handle clearance for safe operation of the winch or block.

Miller DuraHoist™ Two-Piece Adjustable Upper Mast

Model: DH-23 (30-in. – 48-in. Offset)



by Honeywell

Toll Free 800.873.5242 (press 4) • hsptechsupport@honeywell.com • www.millerfallprotection.com

⚠ WARNING! THIS DOCUMENT PROVIDES AN OVERVIEW OF FALL PROTECTION PRODUCTS AVAILABLE FROM HONEYWELL AND CARE HAS BEEN TAKEN TO ASSURE THE ACCURACY OF THE DATA. IT DOES NOT PROVIDE IMPORTANT PRODUCT WARNINGS AND INSTRUCTIONS. HONEYWELL RECOMMENDS ALL USERS OF FALL PROTECTION EQUIPMENT UNDERGO THOROUGH TRAINING, AND THAT ALL WARNINGS AND INSTRUCTIONS PROVIDED WITH THE PRODUCTS BE THOROUGHLY READ AND UNDERSTOOD PRIOR TO EACH USE. FAILURE TO READ AND FOLLOW ALL PRODUCT WARNINGS AND INSTRUCTIONS COULD RESULT IN SERIOUS INJURY OR DEATH.