

CHEMICAL PROTECTIVE WORKWEAR ONE PIECE SUITS



RESPIREX™

Petrochemical Pharmaceutical



Reusable chemical protection one piece suits are available in a wide range of fabrics to provide the best possible protection in numerous industries.

Suits feature nylon coarse tooth zips and a choice of Velcro or press stud zip flaps. Zip can be central or from thigh to collar.

Protection



TYPE 3* and 4 EN467:1995

Respirex chemical protective one piece suits worn together with appropriate gloves and safety boots will meet the performance requirements of Type 4 (spray tight) clothing.

**A Hooded (Cowl) suit worn with an approved face mask taped to the hood, together with appropriate gloves and boots meets the requirements for Type 3 clothing*

Fabric Options

- Viton/Butyl/Viton
- Viton/Butyl/Polyester
- Butyl
- Neoprene
- PVC

See permeation guide for material suitability for particular chemicals

Sizing

| | Small | Medium | Large | X-Large | XX-Large |
|-------------|---------|---------|---------|---------|----------|
| Height (cm) | 164-170 | 170-176 | 176-182 | 182-188 | 188-194 |
| Chest (cm) | 88-96 | 96-104 | 104-112 | 112-124 | 124-136 |

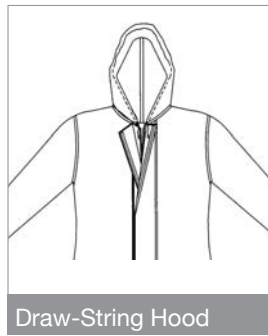
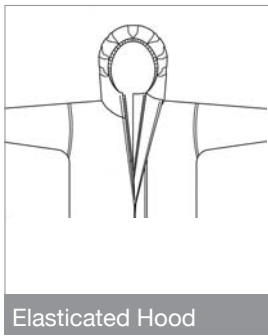
See over for hood, cuff, collar and leg options

CHEMICAL PROTECTIVE WORKWEAR

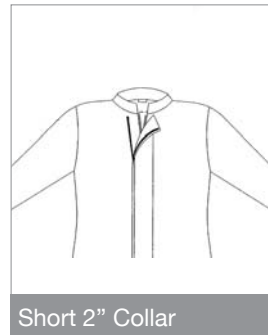
ONE PIECE SUITS

SUIT OPTIONS

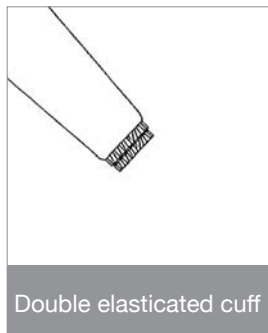
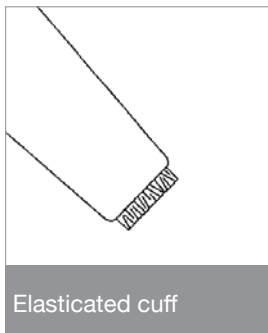
Hood Variations (Cowl Suits)



Collar Variations (Siren Suits)

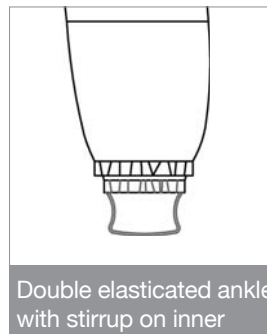
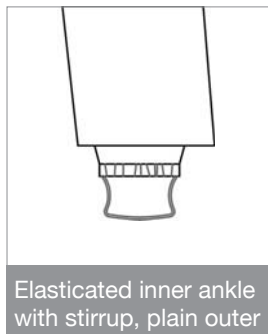
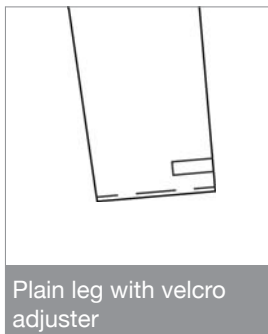


Cuff Variations



Gloves are available as an option and will be supplied in a material compatible with the Jacket

Leg Variations



See separate Hazmax data sheet for full details of the Respirex Workamster Hazmax™ chemical protective boots.