

# Advanced Environmental Instrumentation

## Harnessing the Power of Mobile Computing

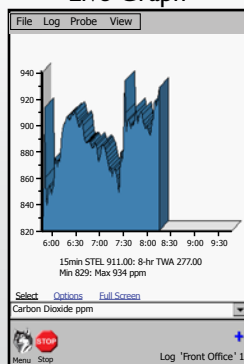


✓ Surveyed

✓ Documented

✓ Reported

Live Graph



Example Screens

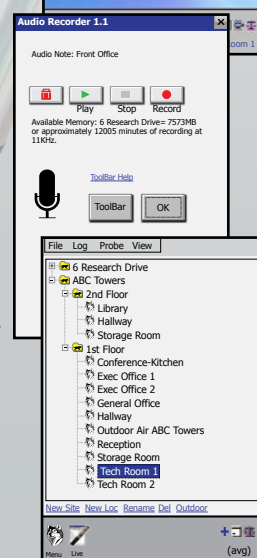
Live Display

TVOC	11ppb
Carbon Dioxide	848ppm
Carbon Monoxide	1.4ppm
Ozone	0.00ppm
Temperature	24.9°C
Relative Humidity	29.7%RH
Formaldehyde	21ppb
Particulate	61.74µg/m3
ΔP	0.2Pa
Barometric	1006mbar

Video/Photo Notes



Audio Notes



Descriptive Data File Names

GrayWolf is transforming the way that environmental measurements are taken. The AdvancedSense Pro meter runs highly advanced, very user-friendly application software. Display, data-log and annotate (on-site) a broad range of parameters with a single, rugged, cutting edge instrument.

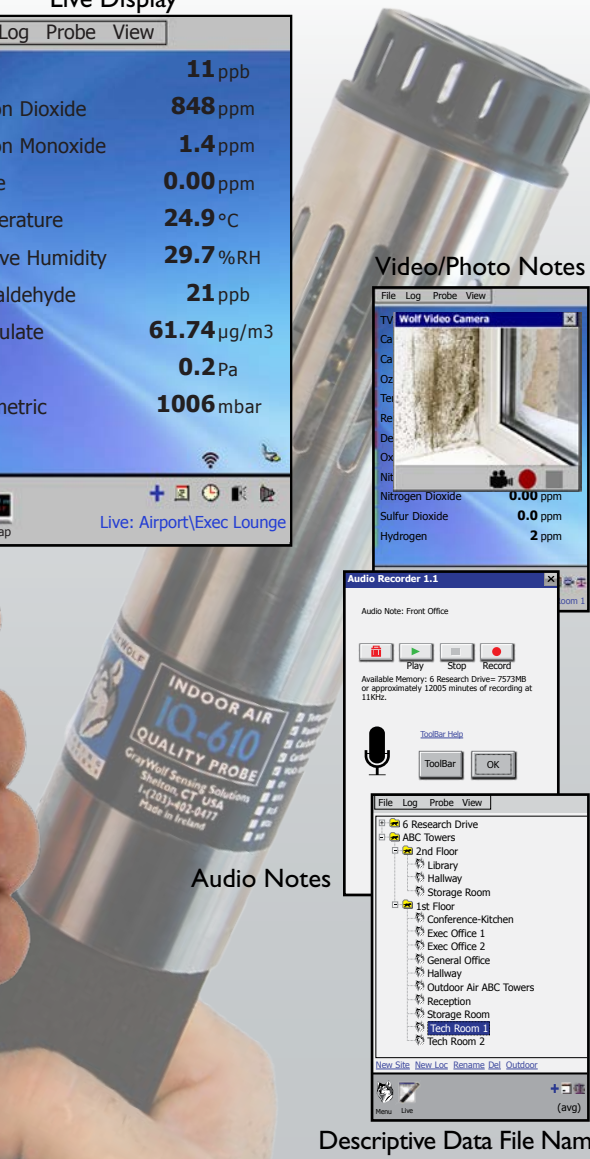
- Simultaneously connect 1 or 2 GrayWolf DirectSense® probes with up to 6 sensors per probe (up to 4 probes with Y-adapters) plus a particulate or HCHO meter
- Available sensors; differential pressure, airspeed, TVOCs, CO<sub>2</sub>, %RH, °C/°F, CO, O<sub>3</sub>, NH<sub>3</sub>, H<sub>2</sub>S, NO, NO<sub>2</sub>, SO<sub>2</sub>, Cl<sub>2</sub>, HCN, HF, HCl, F<sub>2</sub>, HCHO and other parameters
- 2 thermocouple sockets (standard) for air, liquid, surface temperature measurement
- Backlit color touch screen with virtual keyboard (for text input such as descriptive data file names)
- WiFi for emailing data, live updates and optional GrayWolfLive™ remote data access
- **Feature rich** with productivity tools that make your environmental surveys more efficient, more detailed, more reliable:
  - Built-in 2MP camera for photos/videos that attach to data (with annotation)
  - Microphone for audio documentation of surveys
  - Text notes, field (Word template) notes, event notes etc. auto-attach to data
  - Speaker for audible queues, alarms and more
  - On-board educational info, application docs, help videos, sensor tips and more
  - Data transfer & reporting software for trend graphs, note management and much more
- Highly intuitive and extremely Easy-To-Use

# ADVANCEDSENSE® PRO

Environmental Test Meter Plus



**GRAYWOLF®**  
SENSING SOLUTIONS  
PH. 1-203-402-0477  
FAX: 1-203-402-0478  
EMAIL: SALESTEAM@GRAYWOLFSENSING.COM  
WEBSITE: WWW.GRAYWOLFSENSING.COM





# ADVANCEDSENSE® PRO

## Environmental Test Meter Plus

### SPECIFICATIONS:

(for additional sensor/probe specifications refer to GrayWolf's DirectSense®, pitot tube and thermocouple brochures)

#### General:

**Dimensions:** 96.0mm (3.8in.) w. x 177mm (7.0in.) h. x 47.0mm (1.8in.) d.  
**Construction:** Rugged polycarbonate plastic with rubberized side grips. IP64  
**Weight:** 700gr (1lb 8.5oz.) Add 50gr (1.5oz.) for auto-zeroing  $\Delta P$  option  
**Screen Size:** 3.5" HVGA 320 x 480 color touch screen with backlight  
**Memory:** 32GB for data-logging (millions of readings) and notes (photo/video/audio), help videos, documents and WolfSafe™ auto-data backup  
**Camera/LED:** Integral 2MP photo/video camera and 17cd LED illuminating/inspection light  
**Wireless Network:** WiFi 802.11 a/b/g with integrated antenna and Bluetooth 4.0 standard (may optionally be ordered with wireless hardware removed)  
**Audio:** Integral electret microphone (on front, for audio recording) and 8 ohm speaker (on back, for audio queues, help videos and audio note replay)  
**Mounting:** 1/4" - 20 thread (on back) for belt clip, etc. (& for included mini tripod/stand)  
**Operating Range:** -10°C to 50°C (15°F to 122°F), 0 to 100 %RH non-condensing

#### Connectors:

2 x Lemo 8F pin for GrayWolf DirectSense probes (the AdvancedSense Pro will support up to 4 x DirectSense probes with Y-adapters)  
 1 x Lemo 7F pin for particulate meters or RH-AS2 direct-connect TRH probe  
 2 x sub-mini type K thermocouple temperature sockets. Range -80 to 1100°C (-110 to 2010°F)  
 1 x Lemo 7M pin for formaldehyde meter, borescope, external photo/thermal imaging camera or optional USB key download adapter cable  
 1 x USB mini B socket. 1m mini USB B to USB A download cable supplied as standard  
 1 x 12V, 2.1mm DC power socket  
 Optional: 2 x 4mm posts for differential pressure tubing

#### Power:

**Battery:** 4250 mAh Lithium Ion rechargeable  
**Battery Life:** 18+ hours typical for new battery with backlight off (and probes self-powering)  
 The AdvancedSense Pro can power DirectSense probes. Battery life will vary when powering probes, pressure sensors or wireless.  
**Recharge time:** 4 hours typical. Red/green front LED displays charging/fully charged status  
**Power supply:** 100/240VAC, 50-60Hz external charger. Specify local plug

All specifications are subject to change without further notice

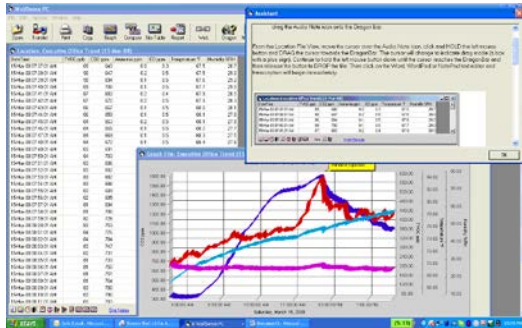
#### Optional Built-in Sensors:

	Differential Pressure (DP-702LH)	Barometric Pressure (BP-101)*
Range	$\pm 10,000\text{Pa}$ , $\pm 40\text{ inH}_2\text{O}$ , $\pm 1000\text{ mmH}_2\text{O}$ , $\pm 100\text{ mbar}$ , $\pm 70\text{ mmHg}$	600 to 825 mmHg, 800 to 1100mBar, 23.50 to 32.50 inHg, 0.80 to 1.10atm
Resolution	0.1 Pa, 0.001 inH <sub>2</sub> O, 0.01 mmH <sub>2</sub> O, 0.001 mbar, 0.001 mmHg	0.1 mmHg, 0.1mBar, 0.01 inHg, 0.01atm
Accuracy (auto-zeroing enabled)	$\pm 1\%$ of rdg $\pm 0.1\text{Pa}$ up to 250Pa, $\pm 1\%$ rdg $\pm 4\text{Pa}$ >250Pa ( $\pm 1\%$ of rdg $\pm 0.001\text{ inH}_2\text{O}$ to 1.000 inH <sub>2</sub> O, $\pm 1\%$ rdg $\pm 0.015\text{ inH}_2\text{O}$ >1.000 inH <sub>2</sub> O)	$\pm 0.1\%$ rdg

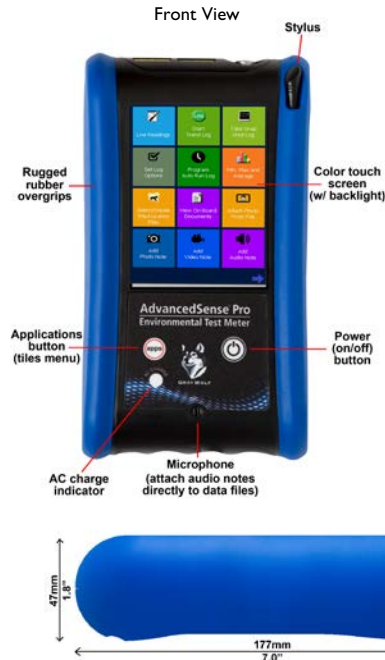
Differential Pressure is auto-zeroing (every 2 minutes by default but zeroing frequency is user adjustable to 5 min. or OFF)

\*The barometric pressure sensor, when installed, will compensate mass concentration readings ( $\mu\text{g}/\text{m}^3$ ) for pressure changes.

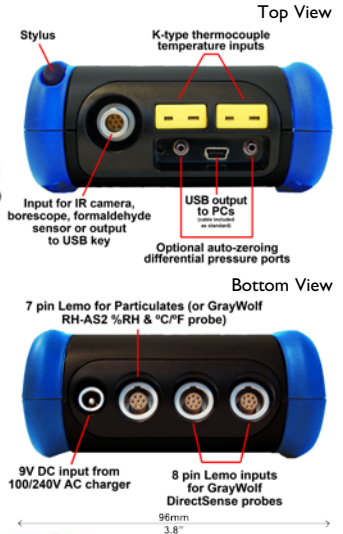
**WolfSense® PC** data transfer and analysis software supplied as standard



### MEASURE SMART



### REPORT EFFICIENTLY



2m dual tubing is supplied with optional differential pressure sensor. GrayWolf offers a selection of pitot tubes for air velocity and K thermocouples for temperature measurement. ▼



**PCC-AS01** pouch with neck-strap for hands free surveys. Also eyelets for camera/inspection light and hand-strap/belt-loop. ▼



▲ **PCC-10A** Hardshell Security case holds AdvancedSense Pro, probes & accessories. Smaller/larger cases also available.

Cloud-based Access Software, Advanced Reporting Software, Calibration kits and other accessories are available from GrayWolf.

View them online at [accessories.graywolvesensing.com](http://accessories.graywolvesensing.com)

**GRAYWOLF SENSING SOLUTIONS**  
 6 RESEARCH DRIVE (WORLDWIDE HEADQUARTERS)  
 SHELTON, CT 06484 USA  
 PH. (1)203-402-0477  
 800-218-7997

EMAIL: [SALESTEAM@GRAYWOLFSENSING.COM](mailto:SALESTEAM@GRAYWOLFSENSING.COM)  
[WWW.GRAYWOLFSENSING.COM](http://WWW.GRAYWOLFSENSING.COM)

**GRAYWOLF SENSING SOLUTIONS**  
 ANNACOTTY INDUSTRIAL PARK, UNIT 1C  
 ANNACOTTY, COUNTY LIMERICK  
 IRELAND  
 PH. (353) 61358044