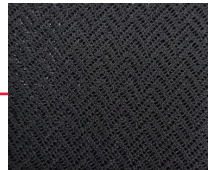


WORKSAFE STARFIRE-L FOOT PROTECTION

STARFIRE



The **WORKSafe® Starfire** brightens the dark with its innovative safety features. Named after the reflective strips visible from any angle, keeping you safe at night. This shoe features a composite toecap, and an EVA/rubber sole for good slip and penetration resistance.

But the Starfire contains an innovative secret: its shoe tongue which doubles as a metatarsal guard. Made from **viscoelastic** material, this safety shoe brings science fiction to reality!

PRODUCT CODE

WSS109SX

WORKSafe® Starfire-L Low Cut, Black Mesh Microfiber, Eva/Rubber Sole

Brand	WORKSafe	Model	Starfire-L
Type	Low-cut Lace-up Shoes	Category	S1P SRC
Standards	EN ISO 20345:2022, SS513:2005	Size	UK 3-12 (EUR 36-47)
Upper	Polyester Mesh / Microfiber	Weight	1.40 kg/pair
Collar	Polyester Mesh / Microfiber	Metatarsal Guard	Viscoelastic
Tongue	Polyester Mesh / Microfiber	Lining	Polyester Mesh
Footbed	Polyurethane (PU)	Toecap	Fiberglass 604
Insert Plate	Kevlar	Sole	EVA/Rubber
Shoelace	High Elastic Polyester	Collar Foam	Polyether
Eyelet	Nylon	Tongue Foam	Polyether

Size Chart Converter

Mondopoint (mm)	232	239	246	252	259	272	279	286	292	306	312
UK	2	3	4	5	6	7	8	9	10	11	12
US	3	4	5	6	7	8	9	10	11	12	13
EU	35	36	37	38	39	41	42	43	44	46	47



Mondopoint: L

STARFIRE FEATURES

Anti-static

Breathable Mesh Fabric

Metatarsal Guard

Impact Resistant

Reflect Lights

Shock Absorption

Oil Resistant

Slip Resistant

Materials

- Mesh Fabric
- Viscoelasticity
- Composite Toecap
- Reflective Strips

The WORKSafe® Starfire's shoe tongue is made of a **viscoelastic** compound that can repeatedly harden upon impact. Think of it like flexible armour.

This trait reduces impact transfer to the fragile metatarsal bones in your feet.

Tested and conforms to **EN1621-1 Level 2 standard** for Motorcyclists' Protectors for Limb Joints.

