



Ramp(For Use With Hard Covered Spill Pallets - BFR5

PRODUCT OVERVIEW

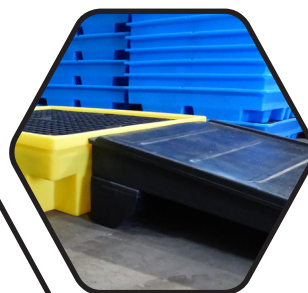
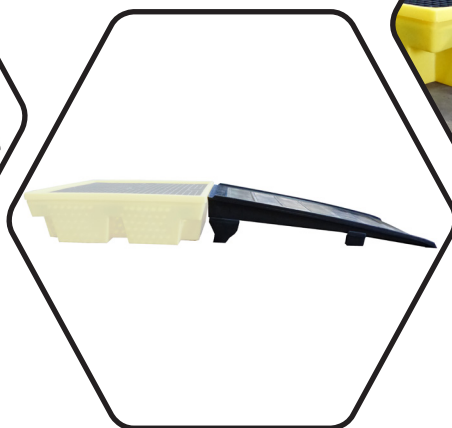
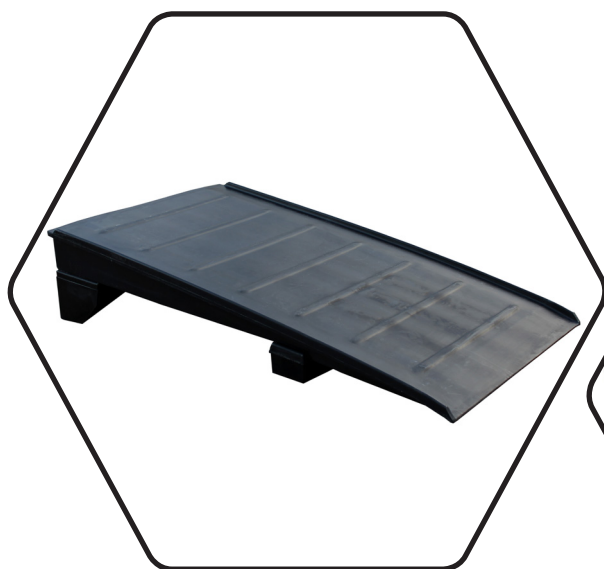
Backed by our 3 year guarantee

A heavy duty ramp manufactured from 100% polyethylene to provide toughness and durability, it features grip runners and raised sides for additional stability and is designed for use with spill pallets BP4, BP4HC and BP2HCH.

You will require an appropriate size/capacity fork lift truck to offload this item from the delivery vehicle. Our standard delivery doesn't include any off-loading.

 100% polyethylene for chemical compatability

 UV Stabilised



SPECIFICATIONS

CODE	EXTERNAL SIZE (L x W x H)	NO OF CONTAINERS	SUMP CAPACITY	COLOUR	TARE WEIGHT	UDL
BFR5	1740mm x 1000mm x 370mm	NA	NA	Black	38kg	1000kg

