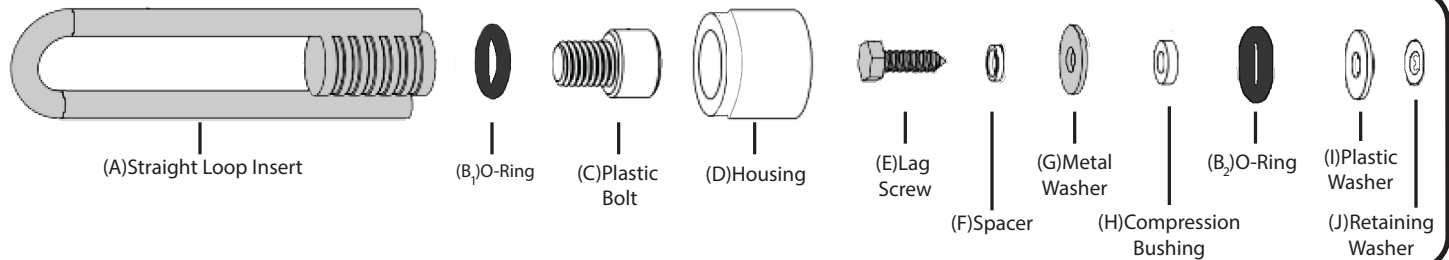
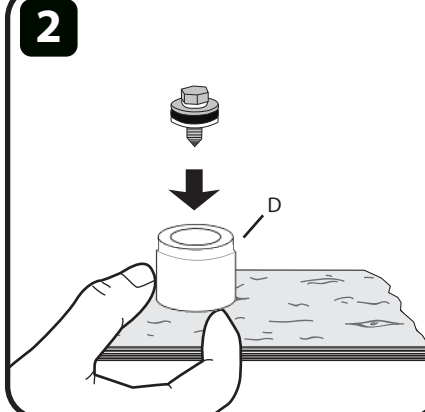


STRAIGHT LOOP INSERT INSTALLATION GUIDELINES

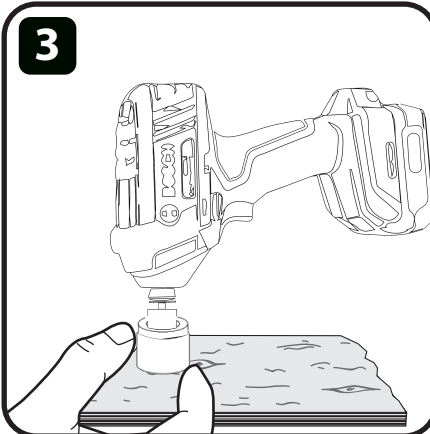
ClimbTech



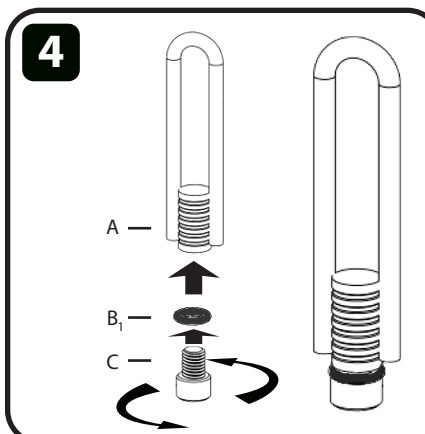
Assemble mounting hardware over the threaded axis as shown. All other components should sit flush with each other and be held in place by Part J.



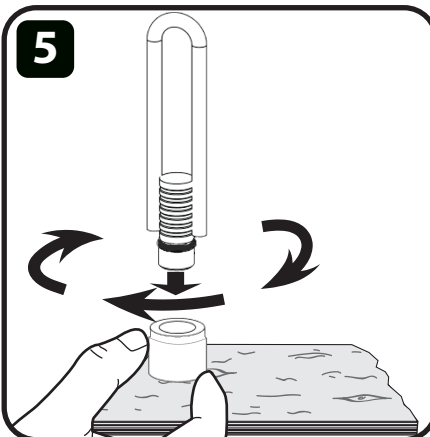
Choose installation location. Surface should be flat and free of debris. Place housing orange side down and hold firmly. Insert mounting hardware into housing and push until secure.



Firmly hold housing flush to surface while fully tightening mounting hardware with drill. Do not over tighten to prevent stripping out decking.

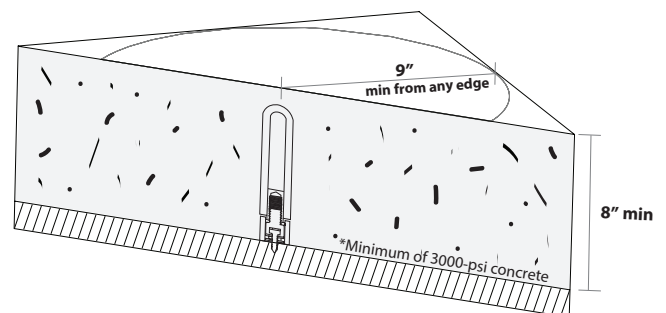


Assemble anchorage assembly as shown. Assembly should be tightened until Part B just contacts Part A and Part C but is not compressed.



Insert bolt end of anchorage assembly from step 2 into Part D. Ensure hex socket on Part C mates with bolt head of Part E. Hand tighten by rotating Part A and applying pressure towards decking. Do not over tighten to prevent stripping out decking.

Section View:



***Note: Avoid kicking or knocking over installed Straight Loop Inserts while working. It is recommended that inserts are fastened to rebar by wire tie or equivalent method for additional support.**