

WM4 User Manual

Product User Manual



Disclaimer – External Documents note to reader

The BAC reading obtained by correct use of this device is only considered accurate at the time of testing. Great care has been taken to ensure the accuracy of each reading. Neither the manufacturer, the distributor, nor the owner accepts liability or responsibility due to any action or claim arising from the reading produced by this device, whether used correctly or incorrectly.

Contents

1	Introduction	5
2	Description of WM4	5
2.1	Variants	5
2.2	Accessories	6
2.3	Specifications.....	6
2.4	Equipment Overview.....	7
3	Installation Procedure.....	10
3.1	Installing the Back Plate	10
3.1.1	Mounting location.....	10
3.1.2	Mounting height and position	10
3.1.3	Mounting instructions	11
3.1.4	Mounting Accessories.....	12
3.2	Mounting and Starting the instrument	13
3.2.1	Mounting.....	13
3.2.2	Initial starting	13
4	Operating Instruction.....	14
4.1	Providing a breath sample	14
4.2	Analysing the breath sample.....	16
4.3	Invalid sample	16
5	Owner Servicing	17
5.1	Straw Replenishment	17
5.2	Cleaning.....	18
6	User Controls	19
6.1	Buttons	19
6.2	Keyboard	20
6.3	Keypad Install	22
7	User Interface	22
7.1	Accessing the user menu.....	22
7.2	Status.....	23
7.2.1	Identification	23
7.2.2	Status Items	23
7.2.3	Network Connections	24
7.3	Status LED lights	24
8	Settings.....	25

8.1	Instrument Information	25
8.2	Alcohol Display	25
8.3	Clock	25
8.4	Authorisation.....	26
8.5	Authorisation Code Entry	26
8.6	Shutdown Instrument	26
9	Custom Appearance.....	27
9.1	General Information.....	27
9.2	Background graphics	27
9.3	Custom Text	28
9.4	Intervals.....	28
10	Logs	29
10.1	View	29
10.2	Export.....	30
11	Networks.....	31
11.1	Configuration	31
11.1.1	Network Setup	31
11.1.2	GSM Set up.....	32
11.2	Services	32
11.2.1	Authorisation Over Network.....	32
11.2.2	Alcolizer Portal	32
12	Email.....	33
12.1	Email Settings	33
12.1.1	Settings – Mail template	33
12.1.2	Settings – Mail server.....	34
12.1.3	Test Mail.....	34
12.2	Email Reports.....	35
12.2.1	Breath Test Results	35
12.2.2	Instrument Status	35
12.2.3	Event Log Report.....	35
13	Relays	36
13.1	Hardware	36
13.2	Configuration	37
14	Self-Check.....	38
15	Printer Setup	39

16	Upgrade Kits Available	39
16.1	RFID Card Reader Installation.....	40
17	Breath Test Authorisation.....	42
17.1	Serial Port Authorisation	42
17.1.1	Americium Serial Protocol	43
17.2	Wiegand USB device.....	43
17.2.1	Direct Network Connection	43
17.2.2	USB Input Device Authorisation	43
17.3	Coin Mechanism Authorisation	43
17.3.1	Coin Count.....	43
18	Factory Servicing and Troubleshooting	44
18.1	Factory Servicing.....	44
18.2	Field Servicing	45
18.3	Troubleshooting.....	45
19	Calibration.....	46

1 Introduction

This User Manual details the operation of the Alcolizer Technology Wall Mount 4 (WM4) alcohol breath testing instrument.

WM4s come in a variety of models with various configurations. Depending on the type of WM4 purchased, this manual may contain information that is not applicable to your model.

This manual is divided into various Sections and Sub-sections to enable the user to access the required information with ease. It includes Warnings, Cautions and Notes applicable to the WM4 machine and a Specifications table.

SAFETY WARNING

- This device contains no owner serviceable parts. Should the instrument require servicing please contact Alcolizer Technology on 1300 789 908.
- This appliance is not intended for use by persons (including children) with reduced physical, sensory or mental capabilities, or lack of experience and knowledge, unless they have been given supervision or instruction concerning use of the appliance by a person responsible for their safety.
- Children should be supervised to ensure that they do not play with the appliance.
- If the supply cord is damaged, it must be replaced by the manufacturer, its service agent or similarly qualified persons in order to avoid a hazard.

2 Description of WM4

2.1 Variants

The Wall Mount 4 is available in the following model types:

- Standard,
- Standard with coin operation,
- Standard with key pad and camera,
- Standard with key pad, camera and cellular (mobile connectivity and WiFi through a GSM module),
- All variants have internet connectivity through an Ethernet port or GSM module in the case of the cellular version.

Some variants include a mix of the types listed above. Depending on the specific user requirements, machines can include unique configurations. Should any concerns over the configuration be noted, contact your Alcolizer Technology representative for further advice.

2.2 Accessories

The Wall Mount 4 has available the accessories below but not limited to:

- Alert System (LED Strobe and Buzzer),
- Card Reader,
- iPad Connectivity, (using Wifi connection router)
- Printer,
- Wiegand.

Some accessories require specific installation and operating instructions. Please, contact your Alcolizer Technology representative for further advice.

2.3 Specifications

Item	Specification
Dimensions	560mm (H) x 390mm (W) x 190mm (D)
Weight	18kg
Power	100-240V ~50/60Hz 75W
Housing	Steel construction
Sensor	Alcohol specific electrochemical fuel cell
Response Time	Within 3-5 seconds for a 0.100g/100ml BAC reading
Display - Type	25cm (10") colour graphics LCD
Operating Temp	0 to 45°C
Storage Temp	0 to 65°C
Measurement Display	4 Digits (x.xxx g/100ml)
Detection Range	0.000 - 0.500 g/100ml
Accuracy	Absolute accuracy to better than +/- 0.005 g/100ml (BAC)
Sample volume	1.2 Litres
Calibration	Daily self-calibration for 12 months (internal certified gas)
Warranty	24 months
Certifications	AS3547 – 1997: Breath alcohol testing devices for personal use, AS/NZS 60335.1 – 2011: Household and similar electrical appliances - Safety - General requirements, EMC: Conducted & Radiated emissions

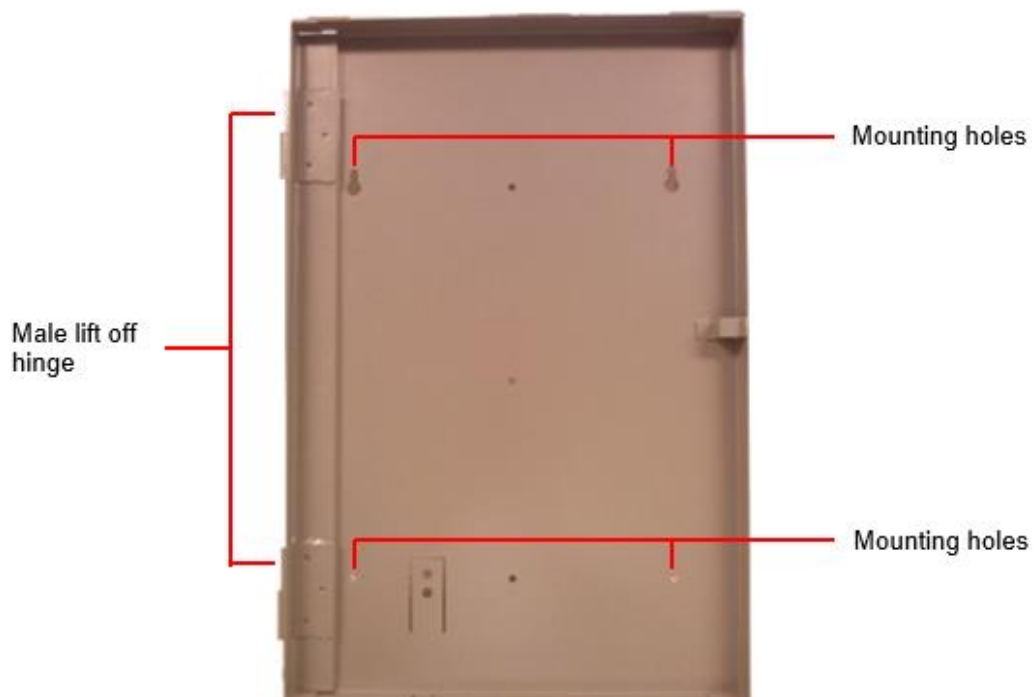
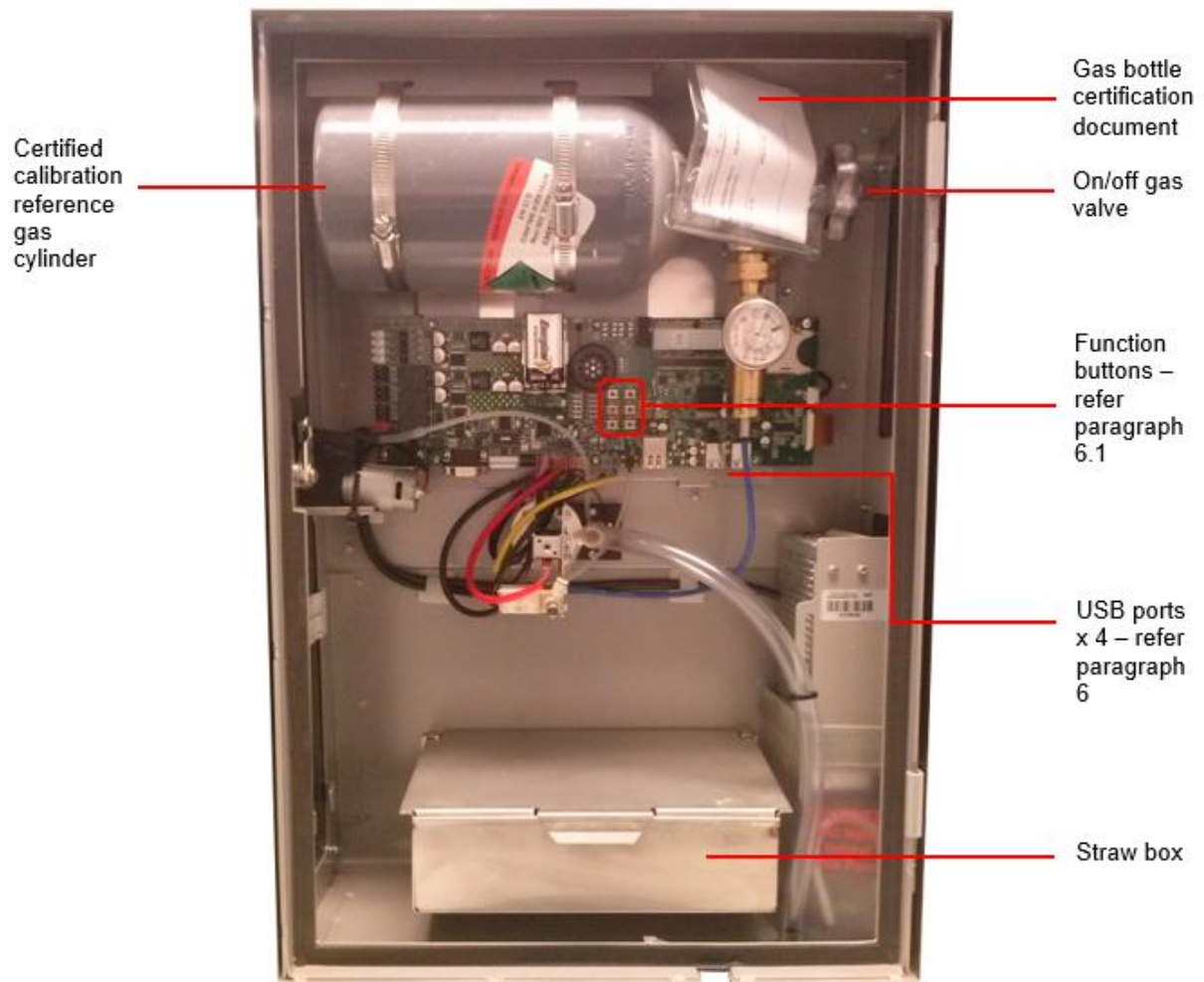
2.4 Equipment Overview

The WM4 is a wall mounted or free standing (on an approved stand) alcohol breath testing machine.

It is designed for high volume, fixed point commercial and industrial alcohol breath testing applications. The Alcolizer WM4 incorporates innovative and pioneering technology with features providing speed and efficiency for all testing requirements. It incorporates a self-recalibration feature providing accuracy and reliability from its own internal NATA Certified Gas Standard every 24 hours.







3 Installation Procedure

WARNING

The WM4 weighs 18kg.

Use two man lift procedures when mounting and removing from back plate.

When the unit is open or not installed on the back plate, electrical components are exposed. Ensure electrical power is isolated at the supply power point whenever the unit is open unless specifically required for special troubleshooting requirements.

3.1 Installing the Back Plate

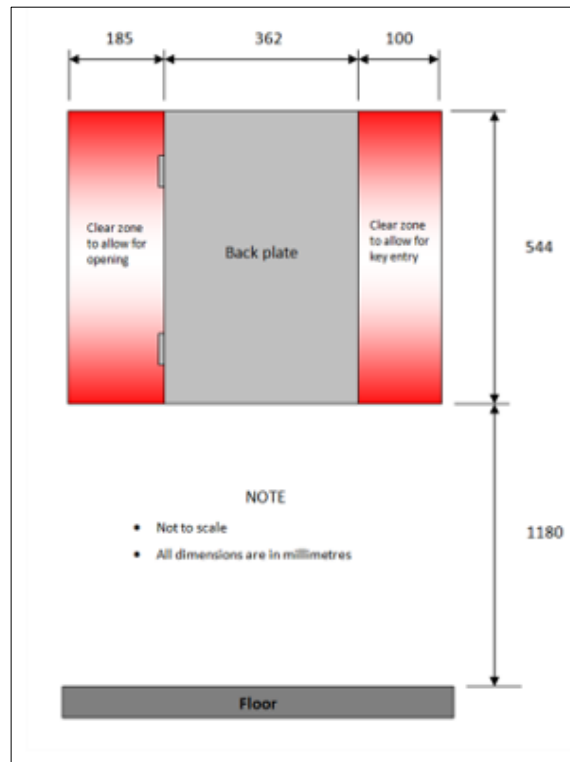
3.1.1 Mounting location

When choosing a suitable mounting location, the following factors should be considered:

- The instrument must be mounted on a wall or structure that can support the weight of the instrument.
- The instrument must not be exposed to rain or water.
- The instrument should be mounted near to a mains power socket to allow for easy connection.
- Under extremely heavy use, the instrument could discharge excess saliva from a vent on the bottom of the main unit. Avoid mounting the instrument above anything that could be affected by moisture (e.g. power points).
- The instrument must not be exposed to extreme temperatures outside of the defined operating range.

3.1.2 Mounting height and position

The instrument must be mounted and positioned at a height to accommodate the majority of users and in such a way to allow access to the key lock and to allow the machine to swing open.



3.1.3 Mounting instructions

Mount the back plate in accordance with the following procedures:

- Unpack and remove the instrument from the packaging. Unlock the instrument and remove the back plate from the unit.
- Choose a suitable mounting site as described previously.
- Bend or remove any cutaway portions on the back plate to permit cable access if necessary.



Cut-out portion

- Fix the back plate to the wall using masonry fixing hardware (e.g. medium duty anchors). The fixings should be strong enough to support the instrument (at least 20kg) and any incidental loading such as a person leaning or pulling on the instrument.

WARNING

Do not use adhesives (Liquid Nails) as the method of fixing as these are not considered to be a reliable or safe fixing means for the WM4.

3.1.4 Mounting Accessories

Currently there are 4 accessories available for purchase which can be connect to the unit via USB.

The accessories are as follows:

- Keypad
- QC Code Reader
- Barcode Reader
- Multi-format USB reader

To install the accessories please follow the instructions below:

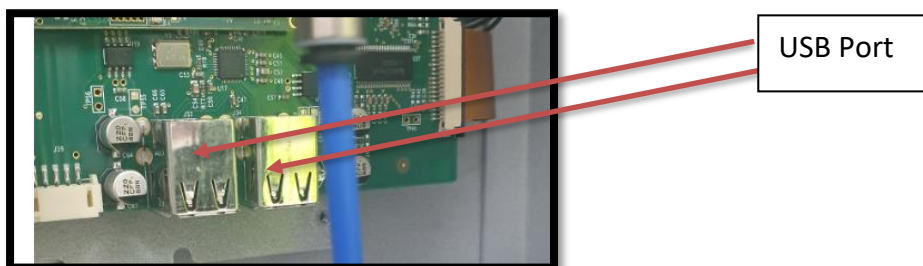
- Using plyers ensure that the cut out on both the unit and back plate has been lifted in an upright position. As seen in the image below



Cut out requiring lifting Lifted cut out in upright position

Please note: This will allow the cable access to the USB port and to the connected accessory.

- Insert the USB from the accessory to the USB port



- Ensure that the device closes to the back plate and that USB cords are situated within the cut out, to ensure the unit closes correctly.
- Accessory has now been installed successfully.

3.2 Mounting and Starting the instrument

3.2.1 Mounting

Mount the instrument in accordance with the following procedures:

- a. Using an assistant, hang the instrument onto the back plate by aligning the male lift off hinge pins on the back plate with the main instrument lift of female hinge tubes.
- b. Confirm the instrument swings effectively and does not impact any other fixtures.
- c. Route any cables to avoid damage and trip hazards.
- d. Visually check that there are no loose components from transportation.
- e. Remove any packing materials.
- f. Remove the screen protector film from the front of the display screen.
- g. Load straws into the straw box, ensuring that the straws are lying freely within the box.

3.2.2 Initial starting

Perform the following steps for the initial start-up:

- a. Turn the reference gas on by rotating the on/off valve one full turn anti-clockwise

NOTE

The gas bottle certification documents (attached to the gas bottle neck) must remain with the bottle.



Gas on/off
valve

- b. Close and lock the instrument.
- c. Plug the power cord into a power outlet and turn the power on.
- d. Plug any other cords into their devices.

The instrument will take several minutes to start up and will take a further 10 minutes to perform its first self-calibration. After this, the instrument will be calibrated and ready for use.

4 Operating Instruction

4.1 Providing a breath sample

PRE-TESTING NOTE

- User's should follow good hygiene practices and we recommend donors wash their hands before and after using the instrument
- For accurate testing results, food, beverages, medications, smoking, vaping or substances that contain alcohol should not be consumed for at least **15 minutes** prior to testing.
- Allow **15 minutes** for any potential interfering alcohol to be cleared from the donor before testing again.
- Blood alcohol concentration can continue to rise for up to **2 hours** after the cessation of drinking and care should be taken if a result close to the designated blood alcohol concentration is indicated.
- When a high blood alcohol level has been reached, it can take **10 hours** or more for the blood alcohol level to return to zero.
- If the test result is above the operational maximum limit, a plus sign (+) after the result will be displayed.

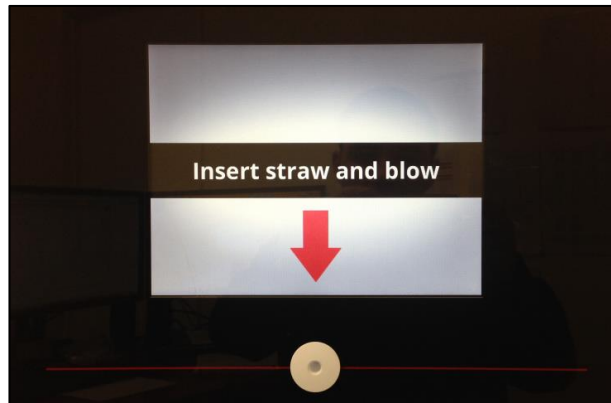
Perform a breath test in accordance with the following procedures:

- a. Ensure the instrument is ready to take a sample. This is indicated with a welcome screen and instructions on how to provide a breath sample. There may be a specific customer welcome screen.

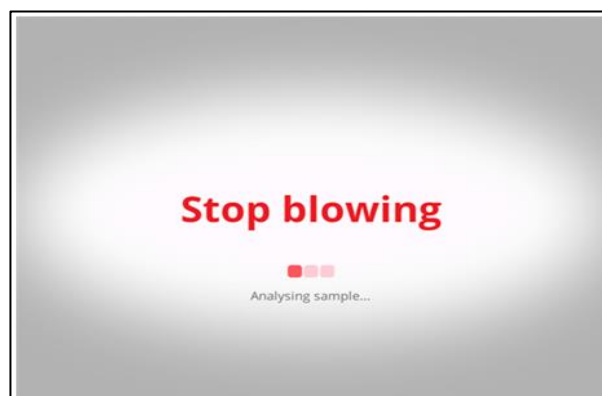
- b. Take a straw from the straw holder.
- c. Place straw in the sample port.

CAUTION

Never inject fluids into the sample port. This could render the instrument inaccurate for subsequent tests or temporarily disable it and may void any instrument warranty



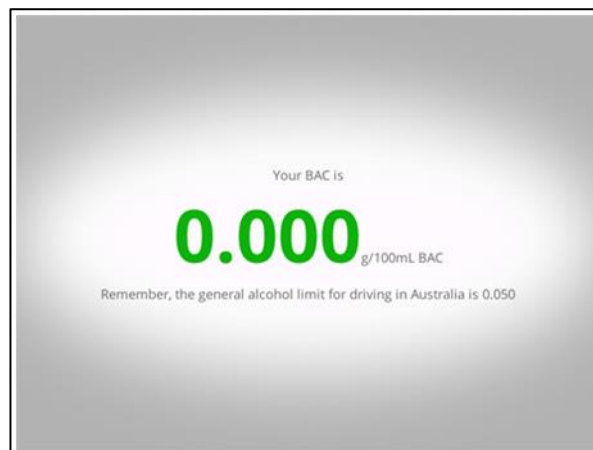
- d. Start blowing and continue blowing until the progress bar reaches 100%. During the blow sequence, a beeping sound will be heard.



- e. Stop blowing when the display shows Stop Blowing. This will also be indicated by a long beep.
- f. Ensure straws are disposed appropriately according to your local authority disposal regulations

4.2 Analysing the breath sample

The instrument will perform an analysis and then display the result.

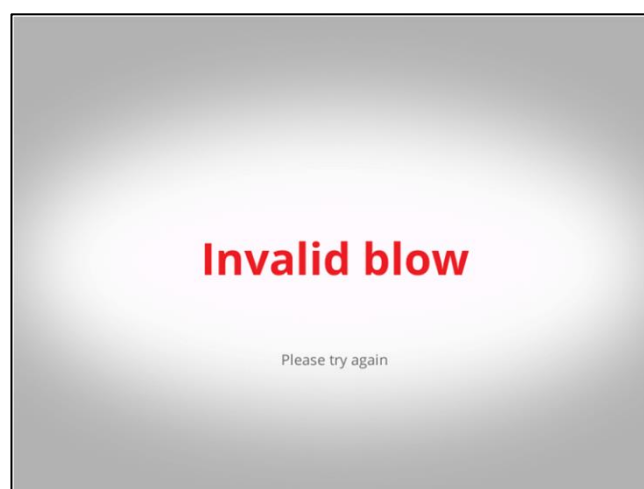


If the BAC detected is zero, the display will be green; from 0.001 to 0.050g/100ml, the display will be orange and for readings above 0.050g/100ml, the display will be red.

The result will continue to be displayed while the instrument resets itself ready for the next test. For zero readings this will typically be about five seconds.

4.3 Invalid sample

The invalid blow screen is displayed if the user stops blowing before 1.2 litres is recorded, they blow too softly, blow too hard or for not long enough.



If the blow is invalid, cease blowing, wait until the Insert Straw and Blow screen is displayed and then provide another sample.

5 Owner Servicing

5.1 Straw Replenishment

Should the straw bin require replenishing, perform the following procedures:

- a. Turn the WM4 off at the power point.
- b. Open the instrument by unlocking it and swinging it open.
- c. Open the straw bin by lifting the latch and removing the cover by manoeuvring it forward.



- d. Load in new straws ensuring they lie loosely and tidily in the bin.



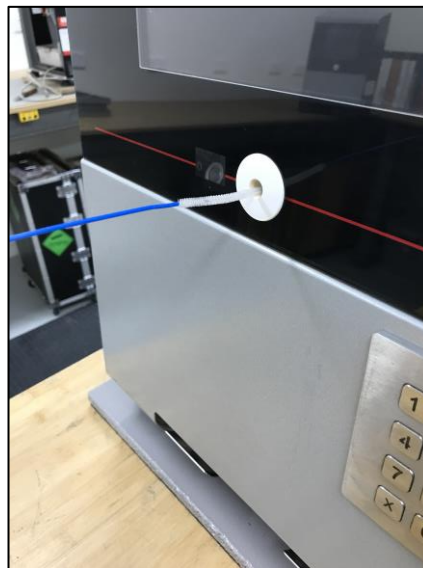
- e. Reinstall the bin lid by aligning it in the rear slots and latching it down. Ensure it is closed securely.
- f. Close and lock the instrument.

- g. Turn the power back on. The instrument will conduct internal checks and then be ready for use in a few minutes.

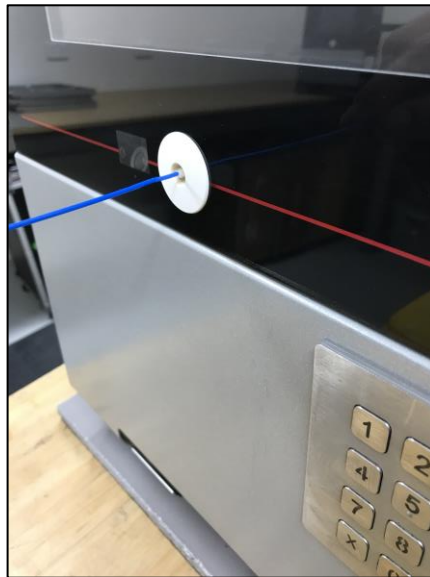
5.2 Cleaning

- We recommend daily outside cleaning of the instrument and surrounding surfaces.
- We recommend cleaning be conducted using appropriate personal protective equipment (PPE) eg: gloves
- Clean by wiping it over with a soft moist cloth followed by a soft dry cloth.
- **Do not** use harsh cleaning agents,
- **Do not** use alcohol based cleaning products, abrasive cleaning pads or chemicals.
- Non-alcohol-based cleaning wipes can be used to clean the Wall Mount 4
- As part of routine cleaning, use the brush provided to clean out the Wall Mount sample port.

1. Insert the bush bristles into the sample port



2. Do Not exceed the length of the bristles through the sample port.



3. Continue a backward & forward motion with the brush for about 5 minutes.
4. Test by blowing a breath sample through the unit.

6 User Controls

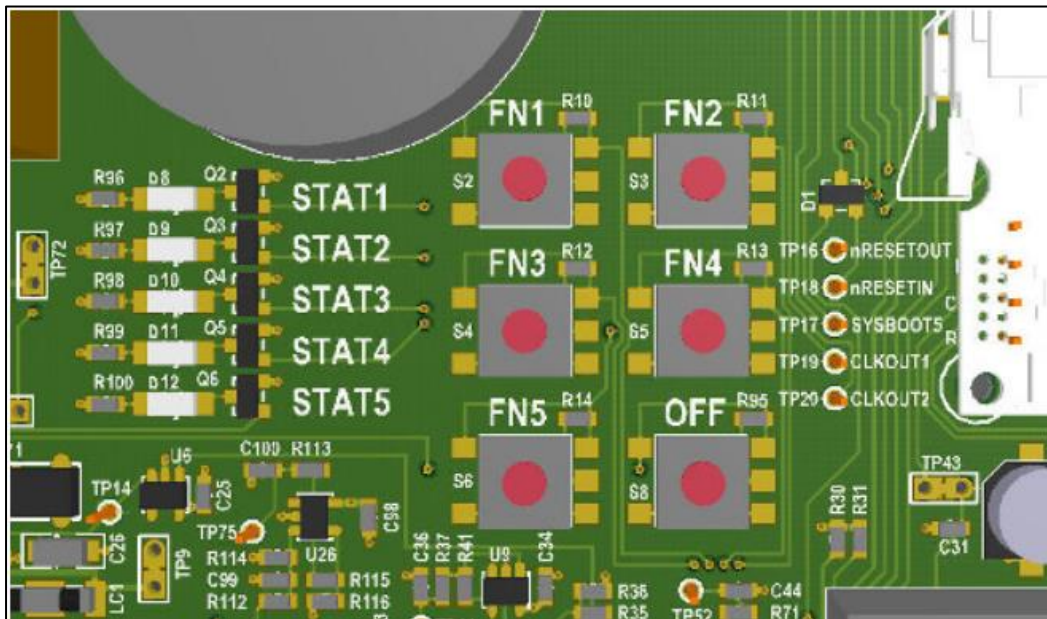
6.1 Buttons

WARNING

When the unit is open or not installed on the back plate, electrical components are exposed. The following steps require the user to open the WM4 with power applied. During the procedures ensure only the buttons mentioned are activated.
Do not come in contact with any exposed components.

Inside the WM4 are buttons which can be used to access certain menus during setup and fault finding. Users should not access the machine and press these buttons unless specifically requested to by instructions in this manual or verbally when in contact with your Alcolizer Technology technical representative.

Access the buttons by unlocking the WM4 and swinging it open. The buttons are located on the main circuit panel.



The only buttons that users need to operate are FN1, FN4 and OFF. Do not touch the other buttons.

The buttons have the following functions:

- **FN1:** Show/hide the Status page. Does the same as pressing F1 on the keyboard.
- **FN4:** Save the event log to USB flash memory. Does the same as pressing F4 on the keyboard.
- **OFF:** Power-off and power-on the instrument.
 - If the instrument is running, press once to power down.
 - If the instrument is powered off, press once to start up.

WARNING

Pressing and holding the **OFF** button **may cause irreparable damage** to the instrument and should only be performed by an Alcolizer Technician.

6.2 Keyboard

WARNING

When the unit is open or not installed on the back plate, electrical components are exposed. The following steps require the user to open the WM4 with power applied. During the procedures ensure only the ports mentioned are touched. Do not come in contact with any other exposed components.

A standard 101 style keyboard (with a standard USB connection) or a wireless keyboard can be connected to the WM4 to access certain menus during setup and fault finding. Users should not access the machine and attach a keyboard unless specifically requested to by instructions in this manual or verbally when in contact with your Alcolizer Technology technical representative.

Access the USB ports by unlocking the WM4 and swinging it open. There are four ports located on the main circuit panel.

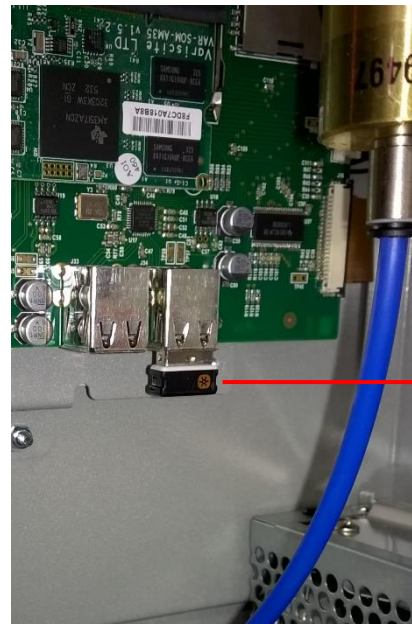
CAUTION

Use care when inserting the connector to the port to ensure neither are damaged.

Keyboard connection with cable



Wireless keyboard connection



Once the keyboard is connected, access to the menu is available. The keyboard functions are as follows:

- F1: Toggle Status screen
- F4: Save event log
- Alt: toggle instrument configuration menu
- Esc: Toggle instrument configuration menu
- Alt+up: Switch to previous configuration page
- Alt+down: Switch to next configuration page
- Alt+left: Switch to previous tab or page
- Alt+right: Switch to next tab or page
- Ctrl+Alt+P: Write screen shot to USB

NOTE

Use only the left Alt key. The right Alt key has no function.

The spacebar has the same functionality as the Enter key in normal usage. When entering data, use the spacebar not the Enter key.

6.3 Keypad Install

The Keypad can be positioned on the right side of the wall mount by the customer.

Ensure that the keypad on the wall is installed next to the Wall Mount 4 unit (within 100mm) in accordance with local and site regulations. As seen in the image below



Handy Tips for Installing Keypad

- Use the 4 premarked holes on the keypad back plate as a template for the drill marks required on the wall. As seen below.



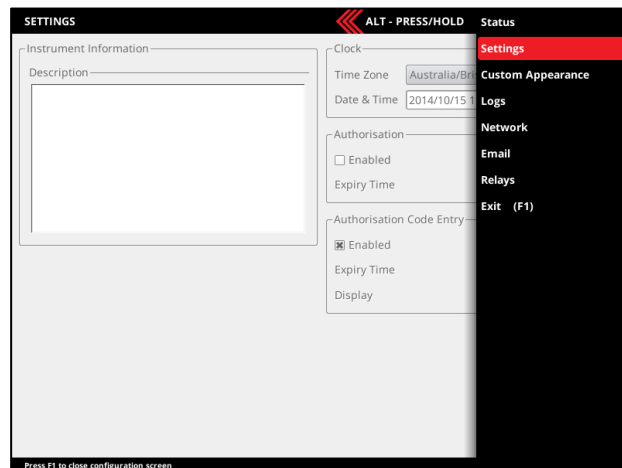
- Once the holes have been drilled in the wall screw the back of keypad into position on the wall
- Ensure step 3.1.4 has been followed to ensure USB connection has been secured for the accessory

7 User Interface

7.1 Accessing the user menu

To access the User Menu, perform the following steps:

- Connect a keyboard in accordance with paragraph 6.2.
- Press the F1 key to access the WM4 User Menu area.
- Press the left Alt key to bring up available menu choices.
- Press the down key and move down to the required menu (e.g. Settings).
- Press left Alt to hide the menu and give clear access to the selected page.



NOTE

A mouse can be used to operate the various User Interface menus. Connect the mouse or mouse wireless connector in the same manner as the keyboard.

7.2 Status

The status page will provide a variety of information for the user:

7.2.1 Identification

- **Serial Number:** A number that uniquely identifies the WM4. This number is also printed on the side panel safety label located on the side of the instrument.
- **Software Version:** The version of software running in the WM4 (e.g. ac-9.1).

7.2.2 Status Items

The status items page will provide a variety of information for the user. Each status item is classified as one of the following.

- **Fault:** The instrument has encountered a critical error and is unable to perform breath analysis. The fault must be manually cleared (or repaired) by an authorised Alcolizer service technician on 1300 789 908.
- **Alert:** The instrument has encountered a temporary condition that is preventing the unit from performing breath analysis. For example, liquid detected in breath sample system. The alert will clear automatically. Breath analysis is disabled if an alert is active.
- **Warning:** The instrument has discovered a problem but is able to function normally (for the time being). For example, calibration gas low. Breath analysis is enabled if a warning is active.
- **Notice:** Information that might be useful to a technician but in no way represents a problem with the instrument. Breath analysis is enabled if a notice is active.
- **Disabled:** Breath testing is disabled for a reason other than a fault or alert. For example, no reference gas.

NOTE

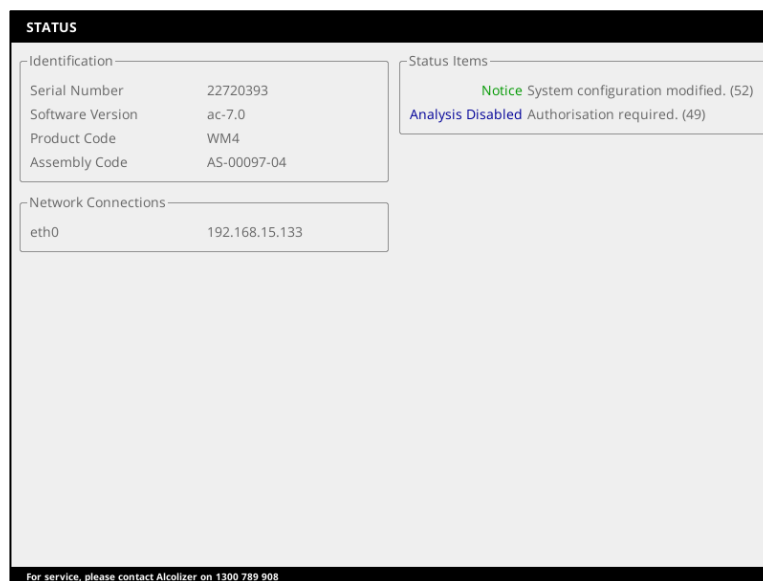
Status items are displayed to the user on the Status page in the instrument's current language. Each status item also includes a unique code to help identify the status item when the instrument is in a different language.

7.2.3 Network Connections

The Network Connections area shows status information for the WM4 Ethernet port.

- A valid network connection is not required for the instrument to operate correctly, however if a WM4 has an internet connection the date and time will be automatically adjusted.
- If connected to a valid network the instrument's IPv4 address is displayed (e.g. 192.168.15.133).
- If not connected to a valid network, none available is displayed.

For further information regarding the Network refer to [Section 11](#).



7.3 Status LED lights

WARNING

When the instrument is open or not installed on the back plate, electrical components are exposed. The following steps require the user to open the WM4 with power applied. Do not come in contact with any exposed components.

The WM4 status can also be assessed by viewing the status LEDs on the main circuit board while the unit is on. Only STAT4 and STAT5 LEDs display status. STAT4 displays the Log Export State and STAT5 displays the WM4 State.

The LEDs various displays indicate the following:

- STAT4:

- LED Off - Log save not in progress
- LED On - Log save triggered or in progress
- STAT5:
 - LED fast blinking – Reset
 - LED two short pulses – Starting up
 - LED continuous one short pulse – Running
 - LED steady blinking – Shutting down
 - LED on – Shut down (power still connected and On)
 - LED off – Unit Off

If any other blinking patterns are noticed, contact your authorised Alcolizer service technician on 1300 789 908.

8 Settings

The settings page provides the configuration options available for the user:

8.1 Instrument Information

The instrument information feature allows a customer to add user-specific descriptions of the instrument (e.g. “Site 13, Gate B”). This description is included in all email reports by default.

8.2 Alcohol Display

The alcohol display feature specifies how alcohol results are displayed by the instrument.

- **Numeric:** Show the specific alcohol content detected
- **Alcohol Detected:** Only indicate whether or not alcohol was detected in the sample.

8.3 Clock

The date and time can be set manually or automatically if the instrument is connected to the internet (via the wired Ethernet connection). There is no need to manually adjust it if connected to the internet.

In order for the WM4 to display the correct date and time, the time zone must be set correctly.

The display format is set to **YYYY-MM-DD HH:MM:SS** and cannot be changed.

NOTE

There is a 9V battery installed in the instrument to retain the date and time for several years while disconnected from mains power.

8.4 Authorisation

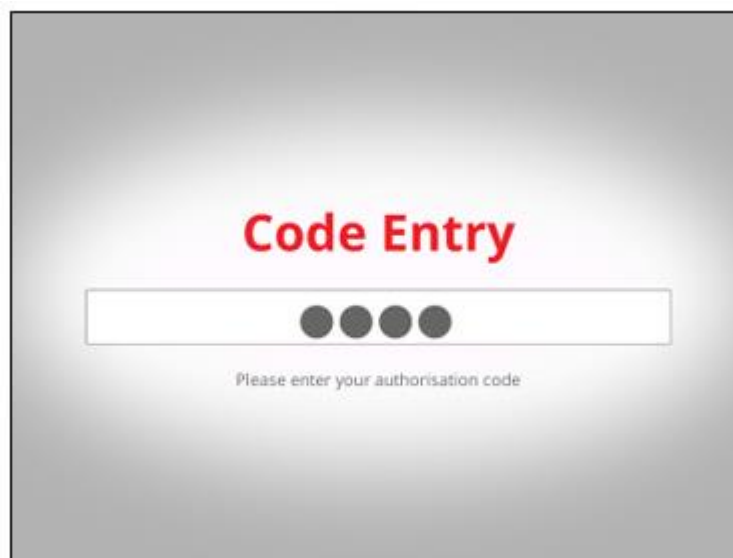
The authorisation feature when enabled prevents the WM4 from performing a breath test until it has received authorisation from an external agent (e.g. remote serial device, keypad, Coin Mechanism, etc).

- **Enabled:** Check to enable breath test authorisation. For further information about breath test authorisation refer to paragraph 15.
- **Expiry Time:** Once a single breath test is authorised, the test analysis must be completed within this time or the authorisation expires and a new authorisation is required.

8.5 Authorisation Code Entry

These settings are only accessible if breath test authorisation is enabled. They apply to authorisation code entry using a USB input device (keyboard, swipe card reader, etc).

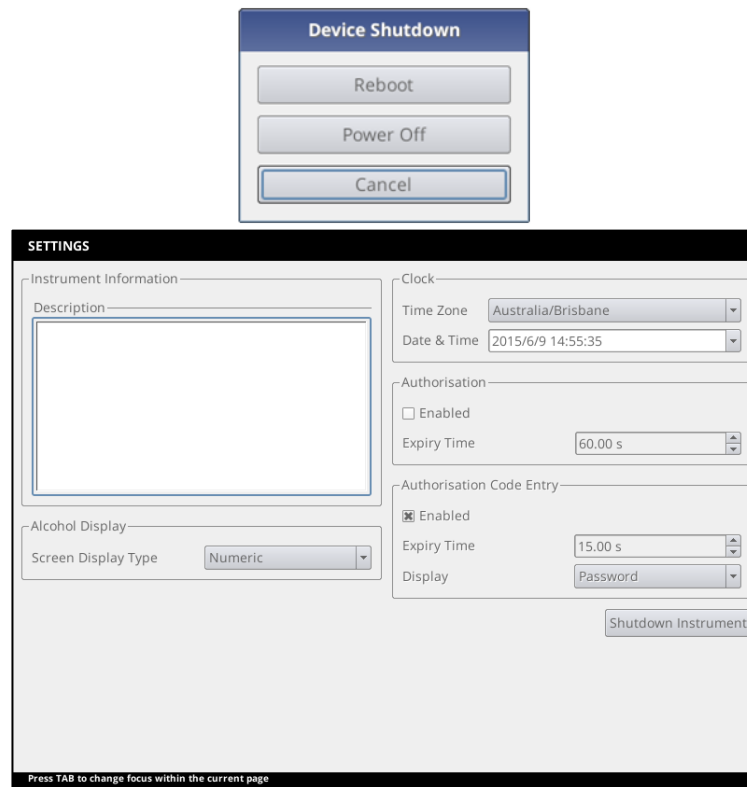
- **Enabled:** Check to allow authorisation codes to be entered using a USB input device.
- **Expiry Time.** Amount of time a user has to accept the input code (by pressing ENTER) before the code entry expires and the user must start again.
- **Display.** Specify how password characters entered on the screen should be displayed.



8.6 Shutdown Instrument

When the Shutdown Instrument button is pressed the following options are presented to the user:

- **Reboot:** Restart the instrument.
- **Power Off:** Shutdown the instrument so that mains power can be removed. This method or the OFF button on the PCBA localised internally in the WM4 are the only two ways to correctly power off the instrument.



9 Custom Appearance

9.1 General Information

The front screen can be customised to suit specific customer requirements. Various images and messages can be displayed. The supported image formats are PNG, BMP, and GIF, however PNG is recommended. The available space for the image is 800 pixels wide and 234 pixels high. To save time in uploading a background image, have only one image on the storage device.

9.2 Background graphics

To import a background graphic, proceed as follows:

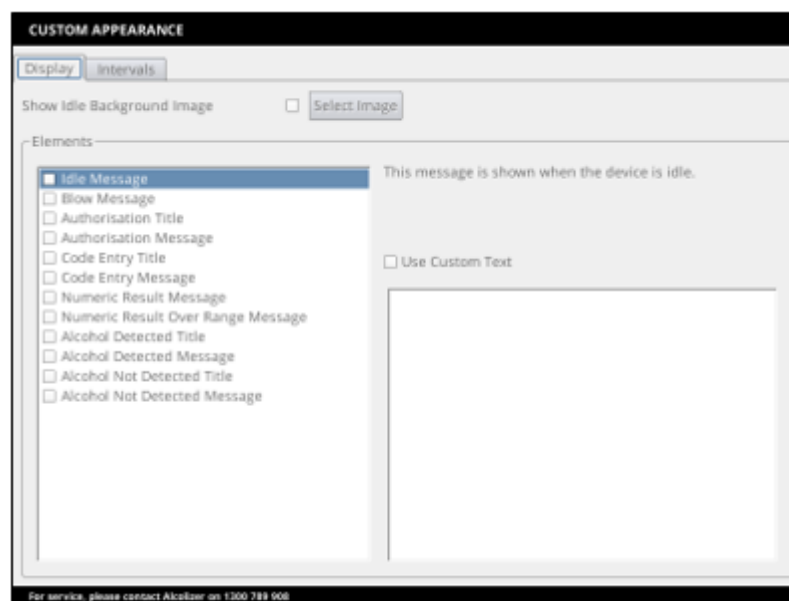
- Connect a keyboard and access the User Menu in accordance with the procedures at paragraph 7.1.
- From the User Menu, access the custom appearance screen by scrolling down to Custom Appearance and pressing space bar. The Custom Appearance screen will appear.
- Tick the Show Idle Background Image box.
- Inset a USB storage device (thumb drive) with the desired image into an available USB port.
- Click on the Select Image button.
- Select the required graphic from the Select Image page and click OK.
- That image will now appear on the screen.

9.3 Custom Text

The Elements area allows customisation of user interface text for a variety of breath testing screens.

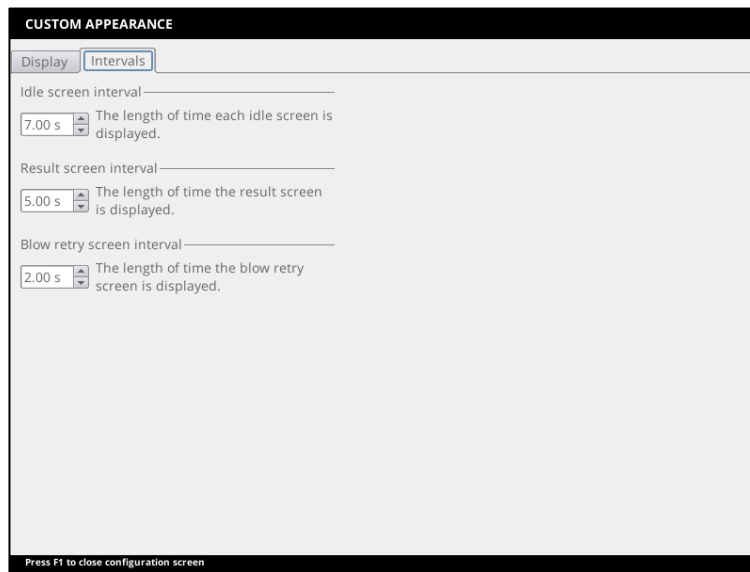
Display custom text on the screen as follows:

- a. Connect a keyboard/mouse and access the User Menu in accordance with the procedures at paragraph 7.1.
- b. From the User Menu, access the custom appearance screen by scrolling down to Custom Appearance and pressing space bar. The Custom Appearance screen will appear.
- c. Tick the Use Custom Text box in the elements field.
- d. Select the desired screen.
- e. Type the required text in the free text field for the highlighted screen.
- f. To activate a free text of a specific screen, tick the box beside the screen name.



9.4 Intervals

It is possible to adjust the timings for some screen display intervals. Descriptions of how the timings apply to the display are presented for each adjustable interval.



10 Logs

10.1 View

The View contains the log records which consist of one or more pieces of information. Each record will show a unique log record id entry followed by the date and time and a brief description of the logged event.

Selecting an item in this panel a more detailed view of the selected log record is also presented below the list of log records.

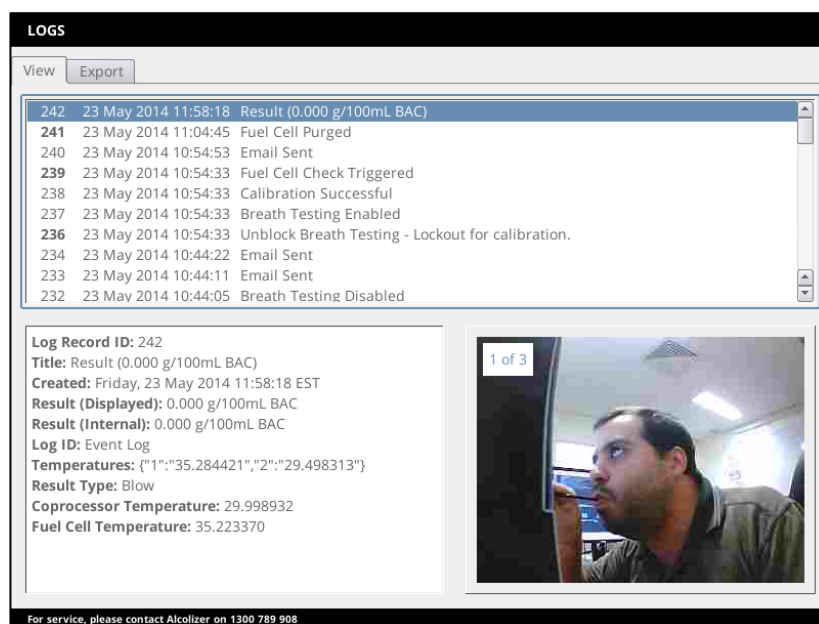
NOTE

If the instrument has a camera installed and enabled then there will also be a photo panel showing any photos associated with the selected log record. If the panel does not have focus it will act as a slideshow over the available images. If the panel has focus the arrow keys can be used to navigate to a specific photo.

The log record can contain any of the following events:

- **Calibration Failed.** Instrument calibration was not successful.
- **Calibration Gas Bottle Changed.** The calibration gas bottle was changed and service life was reset.
- **Calibration Successful.** Instrument calibration was successful.
- **Result.** The result of a breath test.
- **System Shutdown.** The instrument was shut down (to be powered off or rebooted).
- **System Started.** The instrument was started.
- **System Time Changed.** The wallmount's time or date was changed.
- **Fault Cleared.** A fault status item cleared.
- **Fault Set.** A fault status item set.

- **Alert Cleared.** An alert status item cleared.
- **Alert Set.** An alert status item set.
- **Warning Cleared.** A warning status item cleared.
- **Warning Set.** A warning status item set.
- **Notice Cleared.** A notice status item cleared.
- **Notice Set.** A notice status item set.
- **Breath Analysis Block Set.** Data analysis is disabled.
- **Breath Analysis Block Cleared.** Data analysis enabled.
- **Fuel Cell Changed.** Fuel cell changed, configuration and data was reset.



10.2 Export

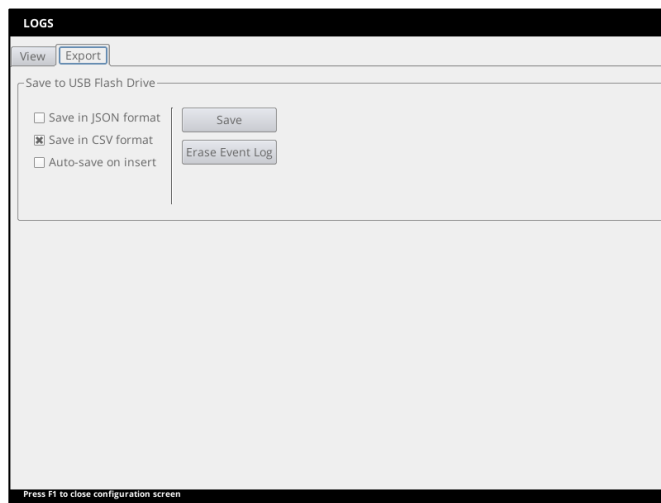
Logs can be exported from the instrument into USB flash drive both by using the *Save* button on the *Export* page or automatically when a USB flash drive is inserted if configured to do so.

Alternatively, the records can be exported by inserting a USB flash drive and pressing FN2 on the PCBA then FN2 to select Export logs. Then press FN4 to export. Refer to paragraph 6.1 to see button location.

These are the formats which logs can be exported:

- **CSV:** Comma Separated Values with one log record per row and record fields separated by commas within rows. This is suitable for import into most spreadsheet applications.
- **JSON:** JavaScript Object Notation in a format suitable for integration with automated systems.

It is also possible to erase the current event log records on the device using the *Erase Event Log* button.



11 Networks

11.1 Configuration

The configuration panel provide general information about the network connection and device.

11.1.1 Network Setup

The network IPv4 Configuration can be set to obtain an IP address automatically or use a static IP address.

Establish an internet connection as follows:

- a. Connect the WM4 to an internet receptacle via the Ethernet cable.
- b. Connect a keyboard/mouse and access the User Menu in accordance with the procedures at paragraph 7.1.
- c. From the User Menu, access the network configuration screen by scrolling down to Network and pressing space bar. The Network Configuration page will appear
- d. Complete the Configuration page with the required details to establish the network connection if a Static IP address will be used or select "Obtain an IP address automatically".

NETWORK

Configuration Services

eth0

IPv4 Configuration

☐ Obtain an IP address automatically

☒ Use Static IP address

IP Address

Subnet mask

Default gateway

Preferred DNS server

Alternate DNS server

Device Information

MAC Address

Bytes Sent

Bytes Received

Cable Connected

IPv4 Status

IP Address

Subnet mask

Default gateway

Apply

Press F1 to close configuration screen

11.1.2 GSM Set up

The WM4 keypad + camera + cellular model includes a GSM (**Global System for Mobile Communications**) modem with a SIM card that must be activated as part of the set up procedure. The SIM card activation code is located inside the WM4 device.

This model does not require changes to the network configuration since it comes set from the factory.

11.2 Services

11.2.1 Authorisation Over Network

The americium protocol (refer paragraph 17.1.1) can be enabled on a TCP/IP port to allow breath test authorisation over the network. The operation of this feature is identical to the protocol operating over the serial ports. There is no limit to the number of network clients that can connect simultaneously.

- **Enabled:** Whether the instrument accepts network connections on the specified port. This is disabled by default.
- **Port:** The TCP port number.

11.2.2 Alcolizer Portal

The Alcolizer Portal enables your device to post logs and status information from the instrument to the portal which is a Cloud service. This portal provides a real-time solution with analytical and statistical tools.

NOTE

Please, contact your Alcolizer Technology representative for further information about Alcolizer Portal.

NETWORK

Configuration Services

Authorisation Over Network

Enabled ☒

Port 1122

Alcolizer Portal

Enabled ☐

Unique ID

Press and hold ALT to open menu

12 Email

12.1 Email Settings

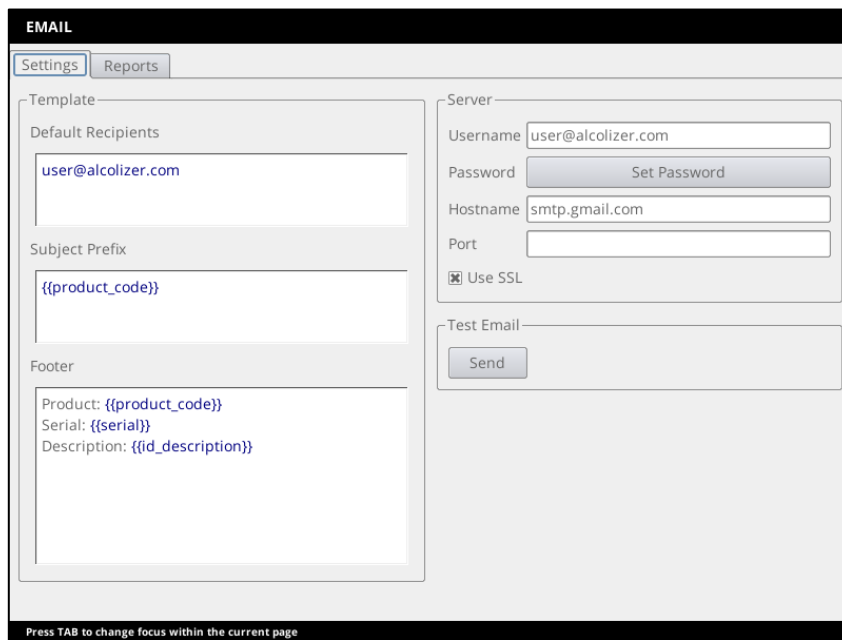
The WM4 is equipped for forwarding email notifications of status and logs. To configure the email function, perform the following steps:

- Establish an internet connection via the Ethernet cable. This step is not required if the instrument has a GSM modem.
- Connect a keyboard/mouse and access the User Menu in accordance with the procedures at paragraph 7.1.
- From the User Menu, access the email configuration screen by scrolling down to Email and pressing space bar.
- The email screen has two tabs: Settings and Reports.

12.1.1 Settings – Mail template

The Mail Template panel allows configuration of the format and recipients of emails sent from the instrument.

- Default Recipients:** A list of email recipients for emails produced by the instrument. e.g. someone@bigmine.com.au. Add additional recipients as required separating each with a space.
- Subject Prefix:** Text to be prepended to the subject line of emails produced by the instrument. It is also possible to use text replacement allowing real data to be inserted into the text when the email is sent.
- Email Footer:** Text to be appended to the body of emails produced by the instrument. It is also possible to use text replacement allowing real data to be inserted into the text when the email is sent.



12.1.2 Settings – Mail server

The Mail Server panel allows configuration of the email account used by the instrument to send emails. This must be a valid email account as it would be configured in a desktop email program.

- **Username:** The username (typically an email address) used to log into the SMTP server.
- **Password:** Password associated with the specified username. Pressing the password button clears the current password and shows a text editor to enter a replacement password. The password characters are obscured by default; press the “eye” icon to temporarily display the password characters.
- **Hostname:** URL of the SMTP server (e.g. smtp.gmail.com).
- **Port:** The TCP/IP port number used by the SMTP server. Leave blank to use a default value.
- **Use SSL:** If enabled then use secure sockets layer to connect to the SMTP server.



12.1.3 Test Mail

The Test Email panel allows sending a test email from the system, confirm email settings and provide feedback on any issues the instrument has sending emails.

Activating **Send** will initiate a test email with the current configuration. The Test Email panel will then report the status of sending the email and if it fails, indicate information about how sending the test email failed. Due to the very long time out periods specified for email configuration, if there is an issue with the Mail Server settings, it can take a very long time

for the test email to fail and this can also block further test emails being sent until the time out for the previous email has sent.

12.2 Email Reports

12.2.1 Breath Test Results

The instrument can be configured to send an email detailed results of a breath test. This can be done for both zero and positive results. If instrument authentication is enabled, the report can also include information about previous breath tests from the same authentication code.

12.2.2 Instrument Status

Notification about changes in instrument status can be sent from the instrument for various types of status information. The report includes information on all currently active status items, not just the status item that changed state. The status options are:

- **Faults (Permanently Out of Order)** – send an email if a fault is raised or cleared.
- **Alerts (Temporarily Out of Order)** – send an email if an alert is raised or cleared.
- **Warning** – send an email if an alert is asserted or cleared.
- **Notice** – send an email if a notice is asserted or cleared.

12.2.3 Event Log Report

The instrument can be configured to send periodic emails containing log information for the given period. The interval for the report can be configured from hourly through to monthly and the day or hour the report will occur on is dependent on the start date. For example:

- The current date is the 3rd of October 2013.
- The Start Time chosen is on the 29th of September 2013, 12 noon.
- The Report Interval is Weekly.
- The next email will be sent on the 6th of October 2013, 12 noon.

13 Relays

The WM4 is equipped with three relay outputs on the circuit board and their outputs can be configured to trigger in response to a breath test result. To access the Relays Menu refer to paragraph 7.1.

If a relay output is enabled, the relay will trigger for the specified duration if the breath test result is **greater than or equal to** the minimum value and **less than** the maximum value.

The relay outputs are independent of each other. The minimum and maximum values can overlap such that one, two, or three relays can be triggered simultaneously.

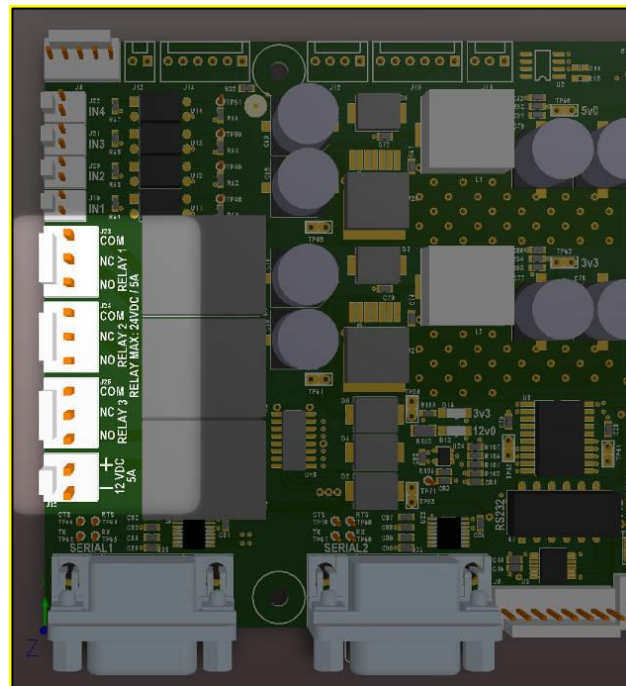
If a new breath test result is calculated while a relay output is asserted from the previous test, the relay takes the value required by the new test.

13.1 Hardware

The relays outputs are labelled on the circuit board as Relay1, Relay2 and Relay3.

Each relay output has three terminals:

- **COM:** Common connection.
- **NC:** Normally Closed, the COM/NC circuit is *closed* (passes current) when the relay is *not* triggered and *open* when the relay is triggered.
- **NO:** Normally Open, the COM/NO circuit is open when the relay is not triggered and closed (passes current) when the relay is triggered.



13.2 Configuration

There are three relays available and their behaviour can be configured on the *Relays* page. For each relay the following properties can be configured:

- **Enabled:** If checked, indicates that the relay should respond to breath test results and enables remaining configuration items for the relay.
- **Min:** If a result is greater than this value the relay should turn on for the configured duration. If the minimum value is 0.00 for example, the relay should turn on if the value of the result is greater than or equal 0.00.
- **Max:** If a result is less than this value the relay should turn on for the configured duration. If the maximum value is 0.00 the relay should turn on if the value of the result is less than or equal 0.00.
- **Duration:** If the relay is enabled and a breath test result falls within its configured range, the relay should fire for a number of seconds equal to the configured duration.

The *Relay Status* indicates if the relay is currently **ON** or **OFF**.

There are three buttons on this page that briefly activates the relays.

NOTE

It is possible for breath test results near a configured value for the relays to act differently depending on whether the actual value was slightly above or below the displayed value. This is due to the nature of the analog input from the fuel cell and possible rounding behaviour below the precision of the displayed value.

In this situation the instrument will not activate two relays in the situation where one relay shares a nonzero maximum with the minimum value from another relay.

RELAYS	Enabled	Min	Max	Duration	Relay Status	Test
RELAY 1	<input checked="" type="checkbox"/>	0.000	0.001	1.00	Off	RELAY 1
RELAY 2	<input type="checkbox"/>	0.001	0.020	1.00	Off	RELAY 2
RELAY 3	<input type="checkbox"/>	0.020	10.000	1.00	Off	RELAY 3

Press F1 to close configuration screen

14 Self-Check

This page allows running some automated self-checks of the instrument to validate the instrument configuration and behaviour.

Each test indicates whether it has been recently tested and lists a title as well as provides a description of what the test does. One, many, or all tests can be run. Some tests require a degree of user interaction and if this occurs instructions will appear on the screen indicating how to proceed.

ID /	Name	State	Progress
10	IPv4 Subnet Ping	Untested	0%
7	Internet	Untested	0%
8	Alcolizer Portal	Untested	0%
9	IPv4 Gateway Ping	Untested	0%

Total Tests: 4
Passed Tests: 0
Failed Tests: 0
Pending Tests: 4

IPv4 Subnet Ping
 This test pings the broadcast address of the configured subnet for each network interface of the instrument. The test passes if any device responds. Note gateways and some other devices may not respond to broadcast pings. This test can fail in cases where there is only a gateway reachable on the same subnet as the instrument, even if devices are reachable on other subnets than the instrument via a gateway.

Run Selected Run All

Press and hold ALT to open menu

15 Printer Setup

Alcolizer WM4 supports ONLY the following printers

- Epson TM-T82III
- Epson TM-T20 USB model
- Epson TM-T82IIIL



To setup the printer:

1. Unpack printer.
2. Remove any tape used to secure parts for transport, then fit paper roll.
3. It is recommended to turn the WM4 off.
4. Carefully open the WM4.
5. Connect printer to the WM4 using USB cable supplied with the printer. Use any available USB port located on the board.
6. Close the WM4. Then, turn on the WM4 and the printer.

The printer should now be operational. Please refer to printer specifications for printer configuration.

16 Upgrade Kits Available

One model with multiple possibilities. Allowing you the flexibility to add features that work for you. Please see the list below for the upgrade kits that are available

	<p>740260 - WM4 Alert Upgrade Comes with buzzer to alert user or supervisor of fail result, WM4 case retrofit required</p>
	<p>711090 - WM4 Camera Upgrade Kit Camera identifies test donor during test. Camera comes with bracket for easy assembly, USB connection, some WM4 models may require front fascia replacement as other may require a WM4 case retrofit.</p> <p>Specification:</p> <ul style="list-style-type: none"> • EFL=1.75 • BFL=4.6mm • BFL (M)=4.3mm • F/NO=2.2 • FIELD OF VIEW (D) = 190 degrees • TV DISTORTION: -33% • CHIEF RAY ANGLE <15 degrees • RELATIVE ILLUMINATION = 90% • CONSTRUCTION: 4G • THREAD: M12*PO.5

	711100 - WM4 Cellular Upgrade Kit Allows for independent communication of results without LAN connection. Indoor/Outdoor solution, built in on machine (WM4 retrofit required), 2 antennas
	740385 - Modem Router, Wireless 4G LTE Allows for independent communication of results without LAN connection. Indoor solution, require extra power point, no retrofit required
	741330 - Keypad, Numeric, WM, USB Keypad for test donors to enter identifying code such as employee ID. Wall mount keypad, can be mounted on WM4 case (retrofit required)
	720211- Printer, Epson TM-T82III, Thermal Receipt Printer Serial/USB Printer to provide thermal or adhesive label printouts of test result. Easy to use and connect to WM4Camera, USB connection
	711110 - WM4 Wiegand Upgrade Kit Comes with only one Wiegand adapter, USB connection (if additional Wiegand adapter is required, use code 711120)
	741300 - Barcode Scanner, Datalogic GRYPHON I GFS4400 2D USB Barcode and QR code scanner for test donors to use identification cards. Wall mount keypad, can be mounted on WM4 case (retrofit required)
	741270 - RFID Card Reader (Multi Format Wallmount USB Reader 6 Foot Cable) Card reader for test donors to use identifying cards. Easy to use and connect to WM4Camera (retrofit required)
	741320 - Bar code reader, Wiegand Interf (BR-7) Card reader for test donors to use identifying cards. Requires Wiegand adapter to communicate with WM4, wall mount feature, built in on WM4 case (retrofit required)

16.1 RFID Card Reader Installation

- 1- Unscrew the two screws that are located on the top and bottom of the RFID card reader as shown below.



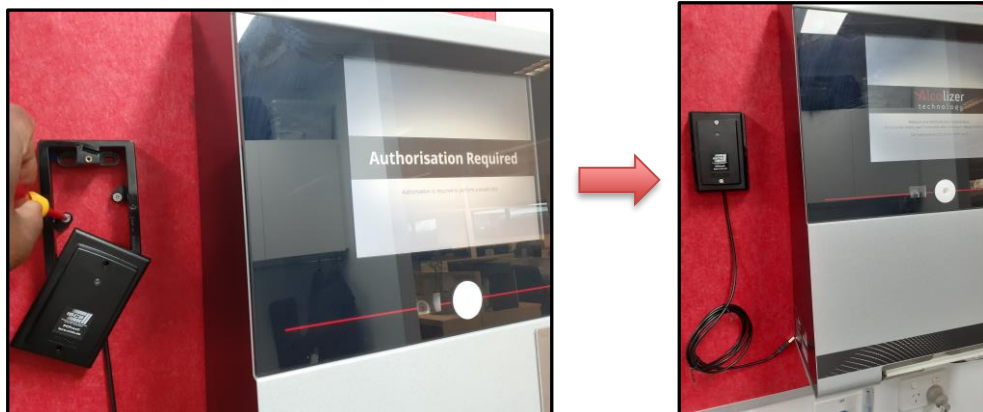
Unscrew the RFID card Reader

- 2- Slowly remove the RFID card reader from Mounting block box and the USB cable should remain inside the mounting box as shown below.



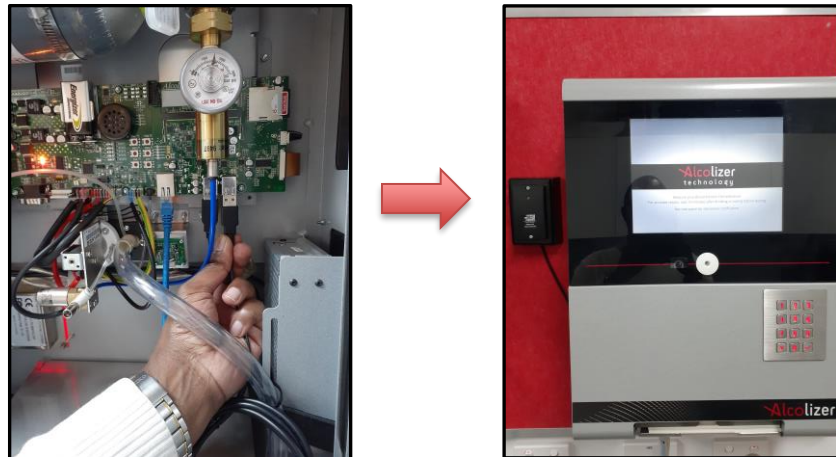
Removal of the RFID card Reader

- 3- Use the mounting block box to pin mark two holes (Black Spots) on the mounting surface where RFID Card Reader Upgrade kit will be located
- 4- The Mounting block box must be screwed or drilled next to WM4 instrument using two screws that are suitable with the surface as shown below. Customer to supply these two screws. Customer to ensure the wall position and surface is suitable for mounting onto.



Mounting the RFID card Reader

- 5- Connect the RFID Card USB cable to WM4.
- 6- You will notice a Red light on the RFID card reader has turned "ON" once the USB cable is inserted into the instrument as shown below



Connecting the RFID cable to the Instrument

- 7- Please refer to the Authorisation section of user manual to enable the Authorisation feature.

17 Breath Test Authorisation

Breath test authorisation is a feature that prevents the wallmount from performing a breath test until it has received authorisation from an external agent (remote serial device, keypad, etc). The authorising agent sends a code to the wallmount that allows the wallmount to execute a single breath test. Once the test is performed the authorisation code and authorisation source is logged with the breath test result in the event log and the wallmount waits for authorisation to perform further tests. If a breath test is not performed within a timeout period the authorisation expires and the wallmount must receive a new authorisation code to perform further tests.

Authorising agents connect to the wallmount through authorisation channels. An authorisation channel is a combination of a physical connection (serial port, ethernet port, etc) and a software protocol operating over that physical connection.

- The following authorisation channels are supported depending on model being used:
- Two RS-232 serial ports (Serial 1 and Serial 2) running the americium serial protocol.
- An attached Wiegand USB device running the Wiegand serial protocol.
- Any number of direct network connections running the americium serial protocol.
- HID input device attached to a USB port (keyboard, card reader, etc).
- The coin mechanism hardware.

17.1 Serial Port Authorisation

The two RS-232 serial ports are activated with the americium serial protocol (v2) at all times, whether test authorisation is enabled or not. This means that all breath test results are sent by the wall mount on *both* serial ports.

If authorisation is enabled then an agent can send authorisation codes to the wall mount on *either* serial port.

The instrument also supports Wiegand based test authorization, if enabled in production.

17.1.1 Americium Serial Protocol

The americium serial protocol operates on *both* serial ports with the following settings:

- Protocol version: am-spec-02
- **Date/Time:** local time (not UTC)

Please contact your Alcolizer Technology representative for further advice.

17.2 Wiegand USB device

The Wiegand support operates via USB serial connections and allows a test to be authorized via a Wiegand card reader.

17.2.1 Direct Network Connection

If enabled on the Service page on Networks menu, the americium protocol can operate over a direct network connection on a configurable port number.

When a remote device connects to the wall mount it will receive *all* breath test results according to the americium protocol specification.

If breath test authorisation is enabled the remote device can also authorise breath tests.

There is no limit to the number of devices that can connect simultaneously to the wall mount.

17.2.2 USB Input Device Authorisation

Any HID input device connected to a USB port (e.g. keyboard, card reader, etc.) can be used to enter authorisation codes.

Legal characters are **a-z**, **A-Z**, and **0-9**, all other characters are ignored.

A carriage return <Enter> is required to submit the data.

The <Esc> key is used to cancel data entry.

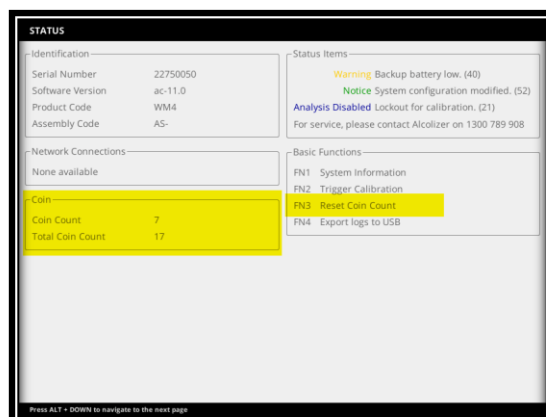
17.3 Coin Mechanism Authorisation

The coin mechanism is a hardware peripheral that attaches to the **IN1** trigger input.

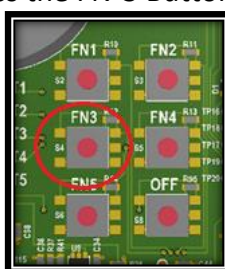
When this hardware input is closed (e.g. by a coin received in the coin mechanism) a single breath test is authorised.

17.3.1 Coin Count

To access the coin count, navigate to the status page and the coin count is displayed as per the figure below



To reset the coin count function, press the FN-3 Button. Coin count will be reset.



18 Factory Servicing and Troubleshooting

18.1 Factory Servicing

The instrument requires servicing after 365 days of usage by an authorized Alcolizer Technology service technician. This can be performed on site or the unit can be returned to Alcolizer's facility.

NOTE

The next service date is defined by the number of days that a WM4 was left ON and performed auto-calibrations (365 in total). The system will display a warning message based on the number of auto-calibrations. If a device was stored by a customer for six months before it was turned on, the service will happen 18 months after it was dispatched.

Contact Alcolizer Technology by any of the following means:

- Phone: 1300 789 908;
- Email: service@alcolizer.com; or
- Web: www.alcolizer.com.

If the machine is to be returned to Alcolizer, prepare it for shipment in accordance with the following procedures:

- Turn off the instrument and unplug the power cord.
- Unlock and open the instrument.
- Turn the gas off by turning the valve on the gas cylinder.
- Remove straws and tape down straw bin lid.
- Using two-man lifting techniques, lift the instrument off the back plate hinges to and remove it from the wall.

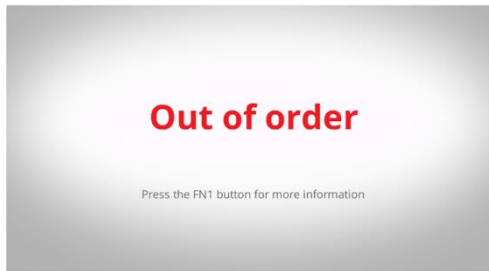

- f. Pack the instrument into suitable packaging to ensure it is not damaged in freight.

18.2 Field Servicing

Contact Alcolizer Technology for further information.

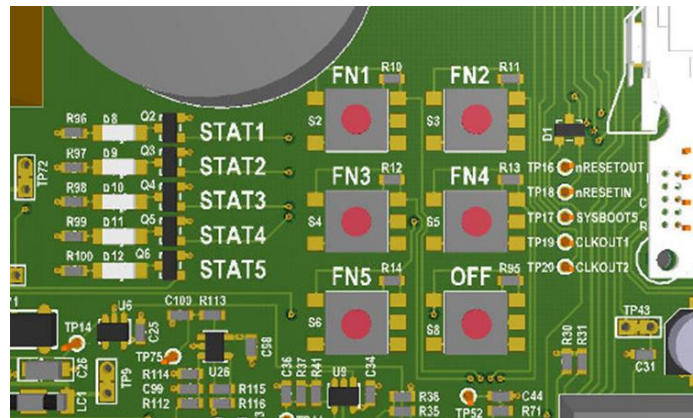
18.3 Troubleshooting

Should the instrument malfunction or a warning message appear on the screen, consult Alcolizer in the first instance.

Noted Problem	Suggested Action
<p>The instrument is displaying an Out of Order message on the screen after initial start-up.</p> 	<p>Ensure the gas bottle valve is open - turn one full turn anti-clockwise.</p> <p>Then, press FN2 button on the circuit board to initiate calibration.</p>
<p>The instrument continues to display an Out of Order message on the screen after initial start-up.</p>	<p>Wait for the instrument to perform an automatic calibration. Note: this could be performed instantly but may take up to 24 hours.</p>
<p>The instrument continues to display an Out of Order message.</p>	<p>Contact Alcolizer Technology for further advice: 1300 789 908.</p>
<p>The instrument is displaying a warning icon in the bottom left corner.</p> 	<p>Either there are status items requiring attention (press "FN1" to identify items requiring attention), or the service life may shortly be about to expire.</p> <p>Contact Alcolizer immediately to arrange annual service: 1300 789 908.</p>

Locating FN buttons.

FN buttons are located on the circuit board as shown in the picture below.



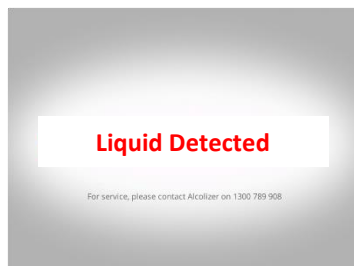
The instrument is displaying “Service Life has Expired”.



The instrument’s service life has expired and requires its annual service.

Contact Alcolizer immediately to arrange service:
1300 789 908.

My instrument is displaying “Liquid Detected”.



It is possible that liquid has been blown into the sample port. Ensure liquid is not present and try again. If the problem persists, allow a suitable time period for the liquid to clear itself (anywhere up to 48hrs), or refer to section 5.2 of this manual.

If the problem persists, contact Alcolizer on
1300 789 908.

19 Calibration

The WM4 self-calibrates every 24 hours for the duration of its service life, and requires no user calibration.