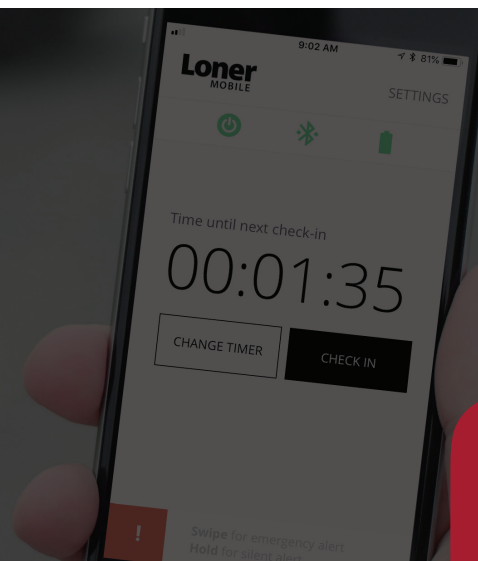


Loner Mobile is a convenient way to automate employee check-ins using your smartphone. Monitoring personnel can pin-point your location if you ever need help, to deliver an efficient emergency response.

SOS Button and Loner Duo are person-worn devices that enhances the overall capability of Loner Mobile. If you need to call for help and your smartphone is not within arm's reach, SOS Button or Loner Duo can be kept on your employee to trigger an SOS alert or confirm a pending alarm.

Paired with low-power Bluetooth®, Loner Mobile and SOS Button or Loner Duo provide a compelling alternative to a dedicated lone worker monitoring device.



TO BEGIN



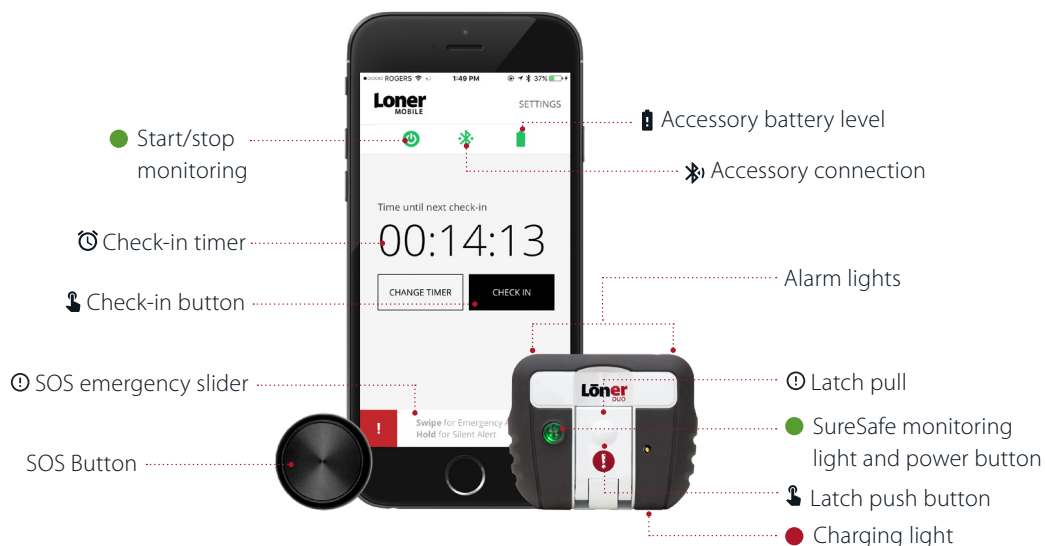
Download Loner Mobile online.

Text Message
Today 9:25 AM

Your Loner Mobile Activation code is: [52684](#)

You will receive a text message to your smartphone with your Loner Mobile activation code. If you do not receive this message, contact your manager or our Customer Care team.

LONER MOBILE & ACCESSORY DETAILS

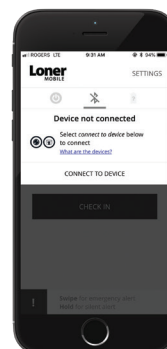


PAIRING ACCESSORIES

Ensure Bluetooth on your smartphone is turned on and SOS Button or Loner Duo is powered on. Once you tap *start monitoring* in Loner Mobile, the Bluetooth symbol will be solid green indicating a connection

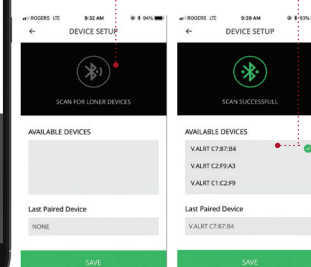
To pair an accessory in Loner Mobile:

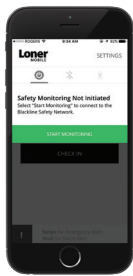
1. Tap the Bluetooth symbol
2. Tap *connect to device*
3. Tap *scan for devices*
4. Select your accessory from the list of available devices
5. Tap *save*



Tap to search

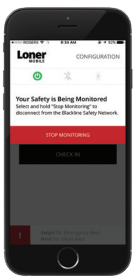
Tap to select





START MONITORING

1. Tap the power icon
2. Tap *start monitoring*
3. Loner Mobile connects to the Blackline Safety Network and your safety is being monitored



STOP MONITORING

1. Tap the power icon
2. Press and hold *stop monitoring* for 3 seconds
3. Loner Mobile will log off the Blackline Safety Network
4. If you're using Duo: press and hold the power button to power down Duo

FEATURES

AUTOMATIC FEATURES (PENDING ALARMS)

When a check-in is required or Loner Duo detects no movement, a pending alarm will sound.



Check-in

To confirm you are OK:



Tap OK



No-motion



Press the latch once



Press SOS Button once

If you do not confirm you're OK within 30 seconds, a red alert will be sent to monitoring personnel.

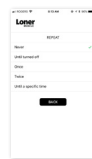
To check in early and reset your timer:



Tap *check in* from the main screen

Customizing the check-in timer

You can customize the timer if you have permissions to configure your Loner Mobile app. Select *change timer* from the main screen to choose your countdown time period and repeat option.



Timer repeat options

Never - The check-in timer counts down once, then asks the user to confirm safety before turning off

Once - The check-in timer counts down and confirms the users safety, repeats the cycle once, then turns off

Twice - The check-in timer counts down and confirms the users safety, repeats the cycle twice, then turns off

Until turned off - The timer counts down and confirms safety, until the user manually turns it off.

Until a specific time
The timer runs until a specified time. At that time safety is confirmed once more and then the timer shuts off.

MANUAL FEATURES (RED ALERTS)



SOS alert

request help with sound/vibration



Silent SOS alert

request help with no sound/vibration



Swipe emergency slider



Press and hold emergency slider for 3 seconds



Pull the latch



Press and hold the latch for 3 seconds



Triple press



Triple press

NOTE: SOS Button can only be configured to send SOS or Silent SOS alerts. Check Loner Mobile's configuration to see how SOS Button is configured.

SILENCE RED ALERTS

Missed check-in, no-motion, SOS and silent SOS alerts are immediately sent to monitoring personnel.

To silence a red alert:



Tap *acknowledge & check-in*



Press the latch once



Press SOS Button once

This does not cancel the red alert – monitoring personnel will follow your emergency response protocol to ensure you're OK.

NOTIFICATIONS



Loner Mobile requires a cellular network connection and GPS to monitor your safety. Loner Mobile will notify you if there is a network error.



Loner Mobile will let you know your accessory's battery level in the drop down menu.



Keep your accessory and smartphone within 5 meters. Lost connection will display a notification and the Bluetooth icon will be gray.