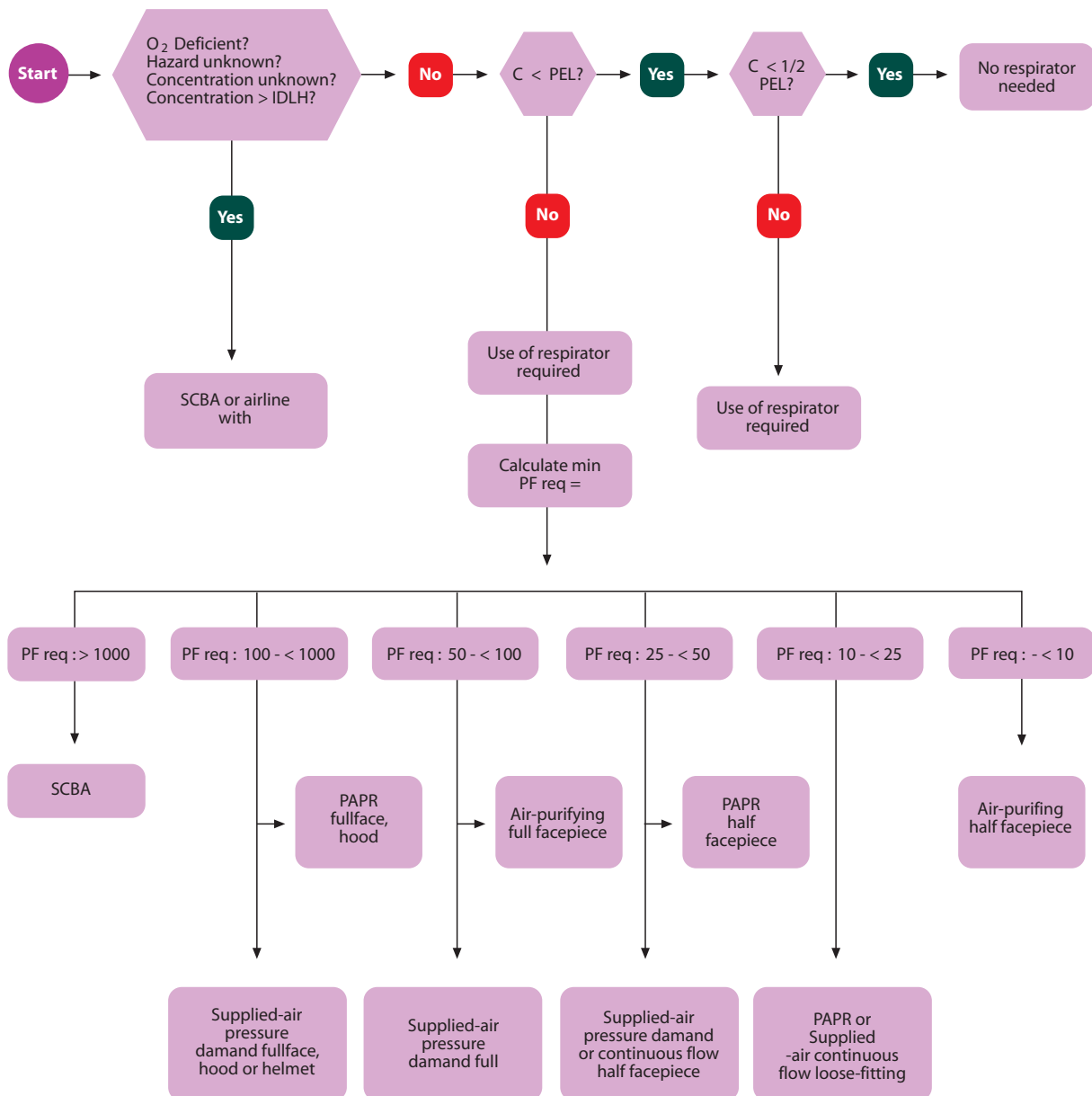




FLOW CHART FOR RESPIRATOR SELECTION



Note:

- For gases or vapours without adequate warning properties, a supplied-air respirator or air-purifying respirator having cartridges with end-of-service life indicators should be used.
- Irritants: use full facepiece, helmet or hood for eye protection
- Selection indicates the minimum requirement. Respirators providing higher protection can also be used.
- PAPR = Powered air purifying respirators
- SCBA = Self-contained breathing apparatus
- C = hazard concentration
- PEL = Permissible Exposure Levels